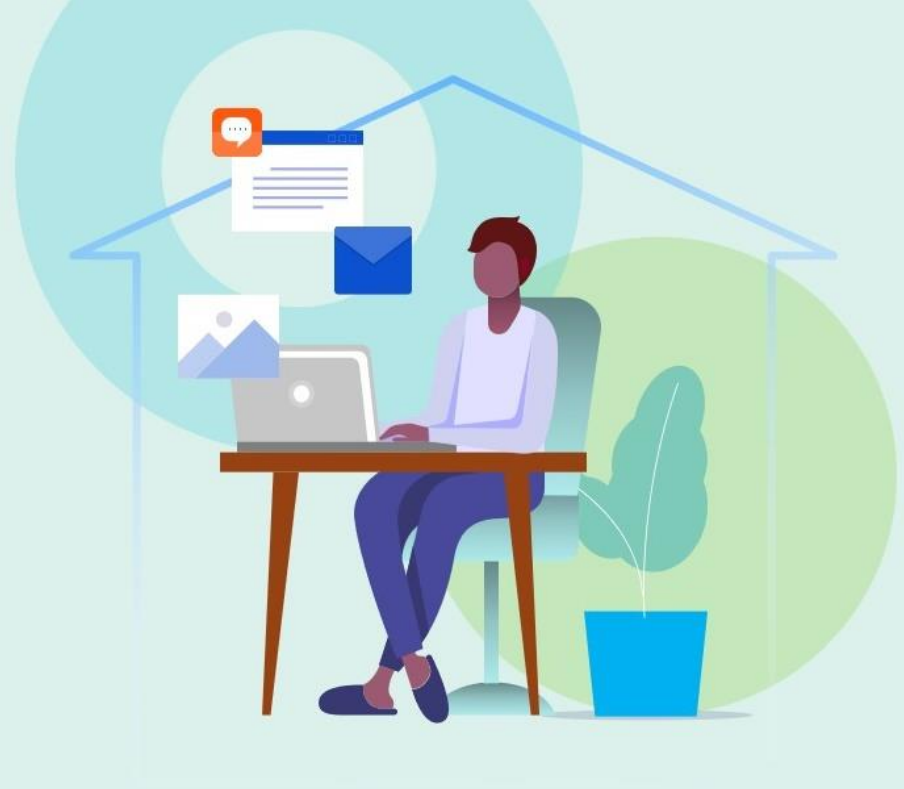


Attendance in a COVID-19 World

Ex Libris campusM

April 21st, 2021



Current Challenges On and Off Campus

New Norm & Regulations

How to comply with new norm and regulations

Unexpected Changes

Return to campus is subject to changes beyond the control of the university

Engagement Analysis

Engagement and retention initiatives are harder to measure

Outdated Communications

Latest information and news are published on webpages but require students and staff to actively check for updates

Overload of Irrelevant Details

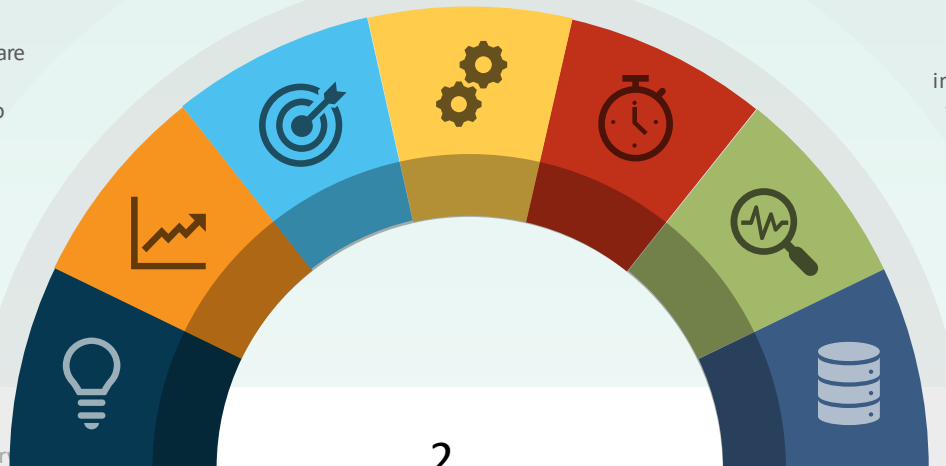
Static, all-encompassing information for students, staff, faculty is overwhelming and challenging to digest

Remote Support

Support for enquiries can be done online only

Many Data Points

Resources are found in different webpages and portals



Attendance in a Hybrid Teaching & Learning

In current days, students attend classes remotely, in-person, and a combination of models

campusM Attendance
delivers a
central repository
for all classroom
attendance, regardless
of Teaching & Learning
models

Quick access to data

Daily review of insights

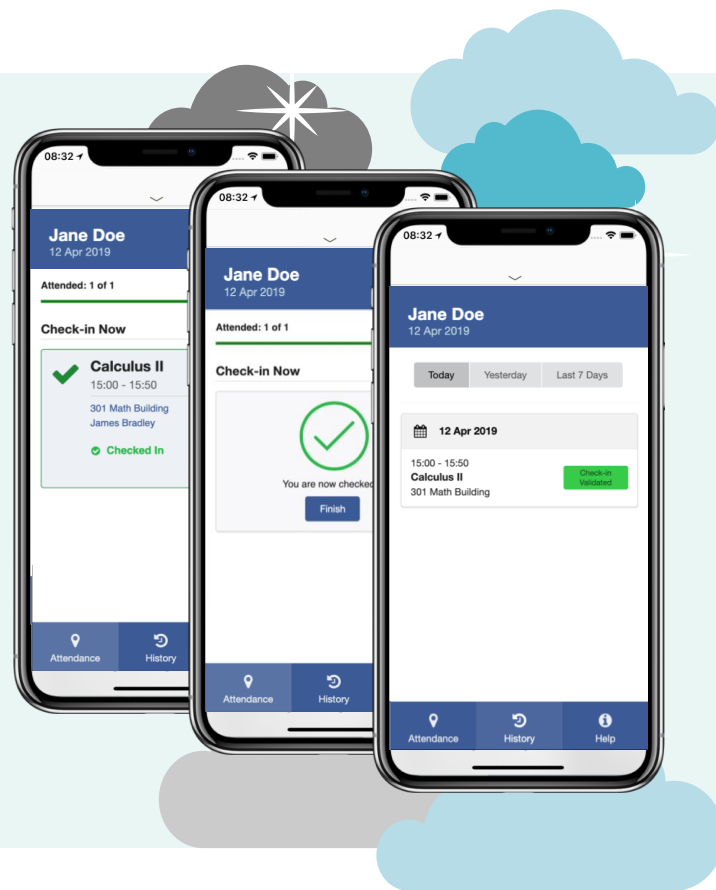
Triggering **intervention actions** (calls, etc.)

Instantly **adapt to change** in models

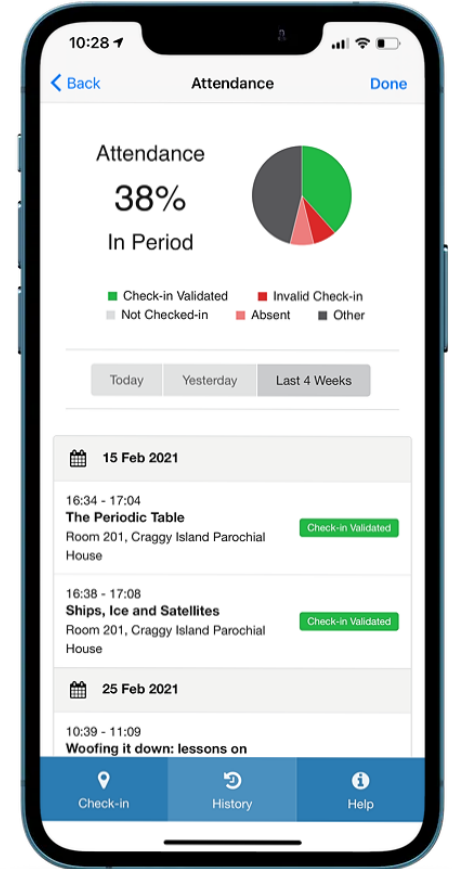
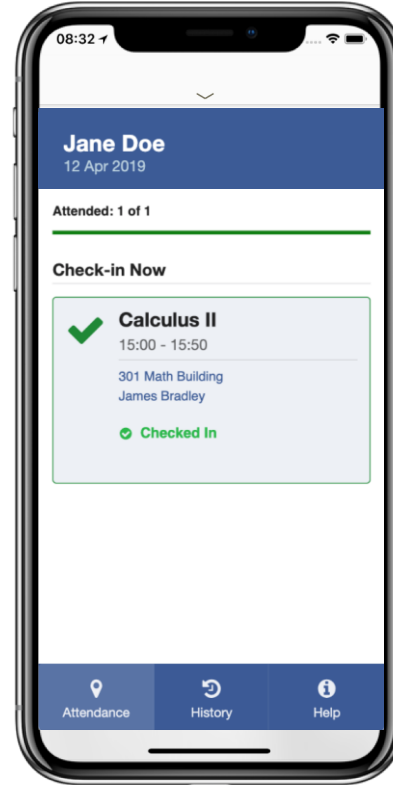
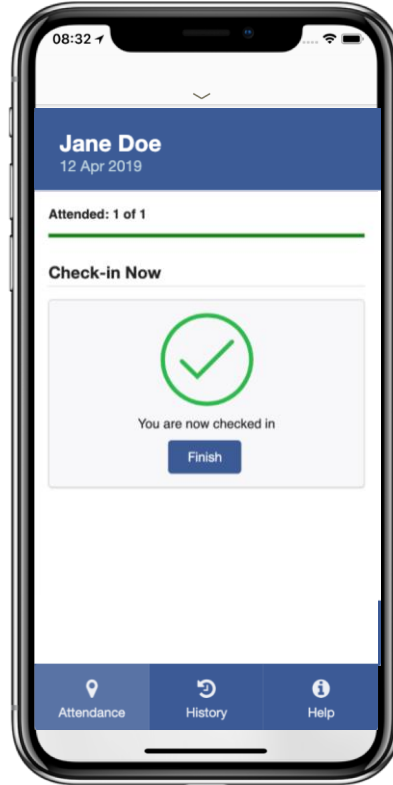
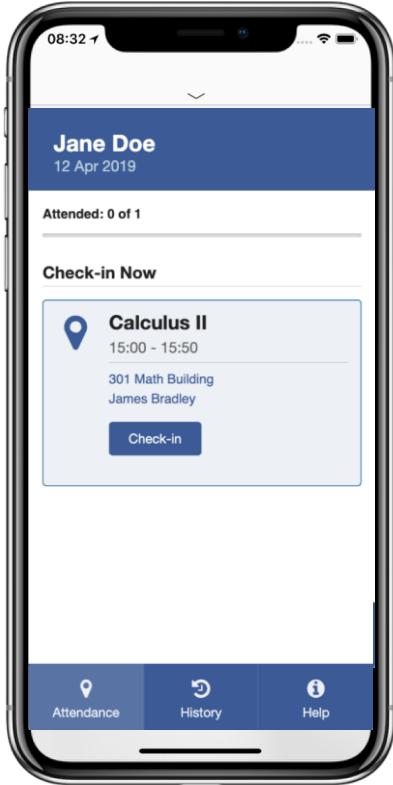
Feedback through Quick Polls

Capture Attendance On or Off Campus

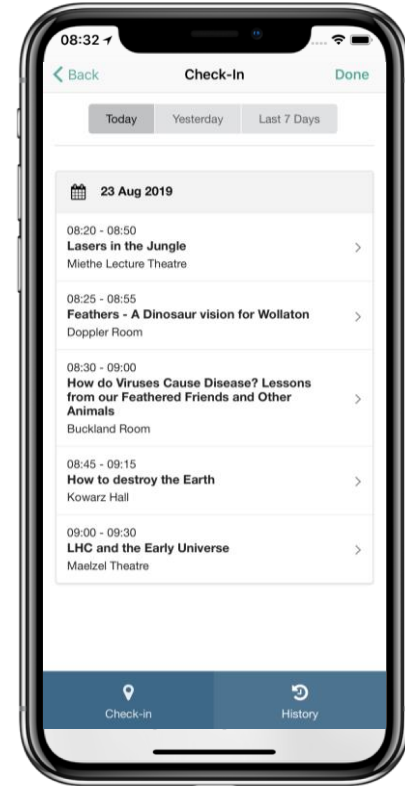
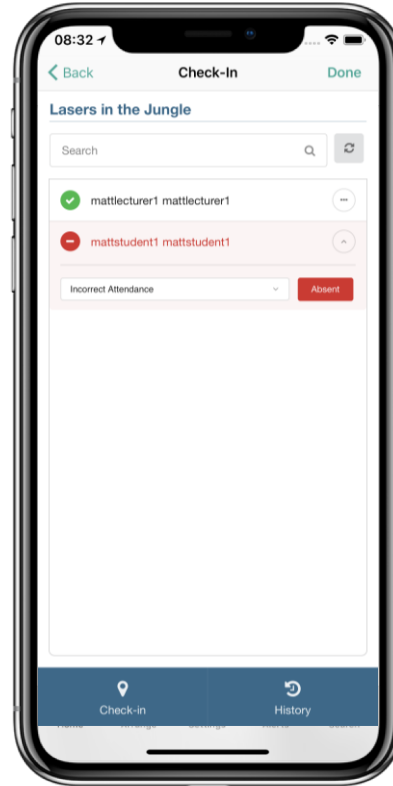
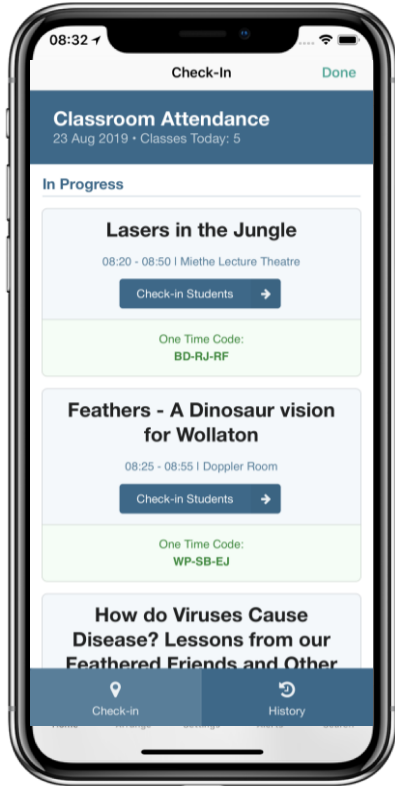
- ✓ Use campusM Attendance to collect students class attendance whether they attend in-person (where possible) or online
- ✓ Use analytics or export the information to support student retention and success initiatives
- ✓ Integrate with wellbeing and success solutions already deployed on campus



End to End Attendance Capture



Attendance Capture Mechanism for Lecturers



Workflow Overview



Reminder

Student receives reminder notification about upcoming classes

Check-in

Student triggers a check in using the campusM app interface

Validation

campusM uses the technologies available to validate the check-in

Upload

Check-in is uploaded to the cloud when the student is online

Extract

Customers extract check-in data using APIs, or view aggregated through OBI

Attendance Partners



Worth Noting

- If you have Timetable set up (with unique identifier) **you can already try it today for student check-in!**
- No additional services required
- No implementation process
- Just enable and test (or contact us to get it working together)



Customer Spotlight



Summary

- ✓ Use campusM Attendance to collect students class attendance whether they attend in-person (where possible) or online
- ✓ Use analytics or export the information to support student retention and success initiatives
- ✓ Integrate with wellbeing and success solutions already deployed on campus

