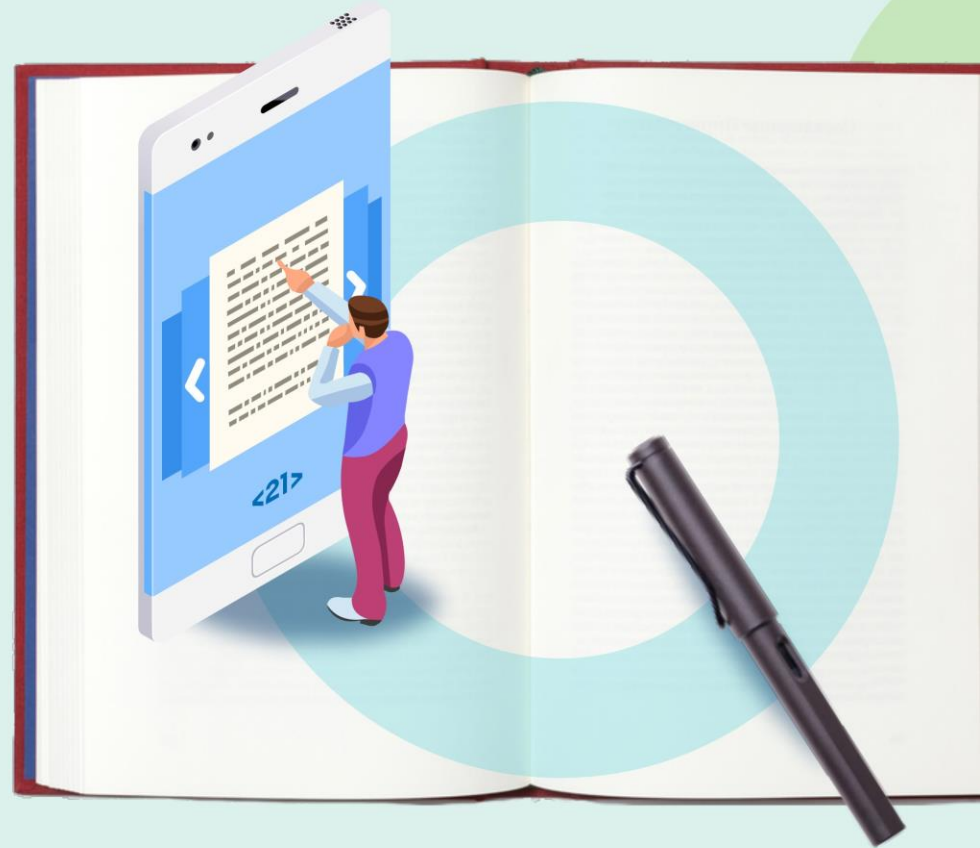


Esploro Roadmap Highlights

2023



Roadmap Highlights by Focus Area



Showcase & Engage



Metrics & Analytics



Build up the Research Info Hub



Improve Workflows



Open System

H1

Personalized CV templates

Share reports & dashboards with executives

Pull research outputs from ORCID

Easily manage previously affiliated researchers

Enhance existing APIs

Showcase academic units with dedicated homepages

Richer metrics based on your InCites data

View and update org. structure in UI that reflects hierarchy

APIs to view, add and update Esploro's organization structure

H2

Display researcher-level metrics in the profile

More granular data in InCites MyOrg based on Esploro data

Create assets from Alma bibliographic records

Improve research information hub management workflows

API access to activities, projects & grants

Showcase & measure alignment with UN sustainable development goals (SDGs)

External collaboration reports

Expert Finder dashboard

Create custom asset categories & types



SHOWCASE & ENGAGE

Use a dedicated state-of-the-art Research Portal for showcasing your institution's experts and their research outputs. Researchers can control and manage their own rich and up-to-date profiles.

CV Management – Personalized Templates



SHOWCASE & ENGAGE



What's Coming:

Researchers will be able to generate a CV output from up-to-date information in their profile.

- Export most data from the researcher profile.
- Save personal templates tailored to various needs.

Release planned: H1 2023



Impact:

**Easy and quick
creation of up-to-
date CVs in multiple
formats.**

Dedicated Academic Unit Homepages



SHOWCASE & ENGAGE



What's Coming:

Visitors to the portal will be able to browse through dedicated academic unit pages and easily view information affiliated with each unit.

- Dedicated page created for each academic unit as part of the organization tree structure.
- These pages will display research assets and researcher profiles affiliated with each unit.

Release planned: H1 2023



Impact:

Easily browse and search for assets and researchers affiliated with an academic unit.

Display Researcher Metrics on the Profile



SHOWCASE & ENGAGE



What's Coming:

Researchers can analyze the public views of their profile and research outputs.

- Information regarding views of the profile and outputs.
- Display graphic information regarding the researcher's research outputs and related activities.

Release planned: H2 2023



Impact:

Researchers and institutions can easily analyze views of their profiles and research outputs.

Support of UN Sustainable Development Goals



SHOWCASE & ENGAGE



What's Coming:

Increase your institution's impact analysis by embracing the UN Sustainable Development Goals.

- Add the goals to research outputs.
- Report and display of the UN Sustainable Development Goals in the portal.

Release planned: H2 2023



Impact:

**Showcase
and compare the
impact of your
research on the
world.**



METRICS & ANALYTICS

Providing research office staff, repository managers, and faculty management with valuable insights into institutional research outputs, research activities, and researchers.

Share Reports and Dashboards with Executives



METRICS & ANALYTICS



What's Coming:

Repository managers will be able to share live reports and dashboards with various stakeholders across the institution.

- Share a link to allow access to live reports and dashboards.

Release planned: H1 2023



Impact:

Equip institutional stakeholders with quality data to support initiatives and decision-making.

Enrich Institutional Analytics with Your InCites Data



METRICS & ANALYTICS



What's Coming:

InCites indicators will be included in several subject areas of Esploro analytics.

- Combine Esploro and InCites data in a single report / dashboard using a new dimension with InCites indicators included in several subject areas.

Release planned: H1 2023



Impact:

**Enrich your reports
and dashboards with
multiple impact
indicators from
InCites.**

Integration with InCites – My Organization



METRICS & ANALYTICS



What's Coming:

Publish Esploro institutional data to InCites – My Organization.

- Publish information about the institution's organization, researchers and assets.
- Use My Organization within InCites to get a granular view of the institution.

Release planned: H2 2023



Impact:

**My Organization
offers a deeper
understanding of
how your institution
is doing in terms of
research.**

External Collaborations Analysis



METRICS & ANALYTICS



What's Coming:

An out-of-the-box analysis of researchers' collaborations, including cross-institutional collaborations.

- The new analysis will be based on approved assets' metadata.
- It will show, among other things, cross-institutional collaboration networks.

Release planned: H2 2023



Impact:

Demonstrate the impact of your institution by showing its strong collaboration worldwide.

Expert Finder Dashboard



METRICS & ANALYTICS



What's Coming:

An out-of-the-box dashboard that combines researcher data from across several different entities to facilitate analysis and benchmarking.

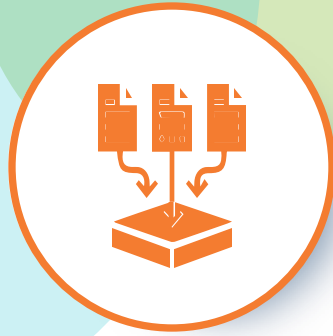
- The dashboard will include information about researchers' publications, grants, projects and activities.

Release planned: H2 2023



Impact:

**Find the best
researcher to match
the task at hand.**



BUILD UP THE RESEARCH INFORMATION HUB

The research information hub holds rich information on the institution's researchers and academic units. Use tools to build up the Research Information Hub efficiently, importing more data and with higher quality.

Efficiency Boosters for Smart Harvesting Framework



BUILD UP THE RESEARCH INFORMATION HUB



What's Coming:

A set of features that will increase efficiency and ease-of-use of the Smart Harvesting Framework workflows.

- Bulk replace of author-researcher match
- Edit asset in generic form from task list
- "Has DOI" facet
- Simpler creation of new non-affiliated researcher

Release planned: H1 & H2 2023



Impact:

Faster approval of author matching, and of assets brought in via Smart Harvesting.

Author Matching Algorithm Improvements



BUILD UP THE RESEARCH INFORMATION HUB



What's Coming:

Ongoing improvements to the Author Matching Algorithm.

- More granular topic embedding to improve topic matching
- Better handling of researchers with common names
- Improved use of affiliation and co-author
- Improved training data (derived from ORCID profiles)

Release planned: H1 & H2 2023



Impact:

Improved author matching which will reduce the burden on administrators and researchers.

Pull Research Assets from ORCID



BUILD UP THE RESEARCH INFORMATION HUB



What's Coming:

Pull researcher output assets from ORCID into Esploro.

- Use another source to help populate Researcher Profiles
- Asset metadata will be taken from CDI (Central Database Index)

Release planned: H1 2023



Impact:

Easily populate profiles without having to manually enter data that is already available in ORCID.

Smart Expansion – Alma to Esploro



BUILD UP THE RESEARCH INFORMATION HUB



What's Coming:

A new type of Smart Expansion in which Alma records can be copied to Esploro Assets.

- Works on a set of Alma BIB (MARC) records
- Optionally update the Alma record to indicate it has been copied
- Optionally include Alma-D files

Release planned: H2 2023



Impact:

Re-use of relevant Alma BIB records as basis for Esploro records.



IMPROVE WORKFLOWS

Use new and improved tools to manage the Research Information Hub and maintain your institution's data including researchers, research outputs, grants, projects, activities, and research resources.

Easily Manage Previously Affiliated Researchers



IMPROVE WORKFLOWS



What's Coming:

Repository managers will be able to easily update affiliation status.

- Update affiliated researchers to non-affiliated and previously-affiliated.
- Update non-affiliated researchers to previously affiliated.
- Update researcher without changing the Alma user.

Release planned: H1 2023



Impact:

**Increased control
over non-affiliated
and previously
affiliated researchers
in Esploro Research
Information Hub.**

Display and Manage Academic Units in New Tree UI



IMPROVE WORKFLOWS



What's Coming:

Repository managers will be able to easily update their institution's academic units on the new management page.

- View and manage all levels of academic units in a tree display.
- Select and update multiple units in the tree display.

Release planned: H1 2023



Impact:

Enabling repository managers to keep the organizational structure up-to-date in Esploro.

Improve Research Hub Management Workflows



IMPROVE WORKFLOWS



What's Coming:

Improved workflows for review, update and approval of researcher output.

- Display relevant metadata up-front.
- Provide easy navigation between related entities.

Release planned: H2 2023



Impact:

Greater accuracy and efficiency with improved workflows, displays and navigation.

Local Management of Asset Types and Categories



IMPROVE WORKFLOWS



What's Coming:

Support local asset categories and types of assets for the institution.

- Administrators will be able to create local categories and types of assets to suit the unique needs of the institution.

Release planned: H2 2023



Impact:

The categories and asset types will suit the exact needs of the institution.



OPEN SYSTEM

Facilitate workflow automation & open and easy transfer of information with tools for integrating Esploro into the institution's ecosystem.

Enhance Existing APIs



OPEN SYSTEM



What's Coming:

Add additional query options to existing APIs.

- Add new query options to the research asset API.
- Add new query options to the researcher API.

Release planned: H1 2023



Impact:

Retrieve all the records you need in a single API call.

Create and Update Academic Units by API



OPEN SYSTEM



What's Coming:

Academic units API endpoint.

- Retrieve academic units by API
- Create new and update academic units by API

Release planned: H1 2023



Impact:

Integrate with campus systems to update your institution's organization structure in Esploro.

Add New APIs for Esploro CRIS Entities



OPEN SYSTEM



What's Coming:

Add APIs for researcher activities, projects and grants

- Retrieve and display Esploro entities in other campus systems

Release planned: H2 2023



Impact:

Display Esploro data as needed in the campus eco-system.