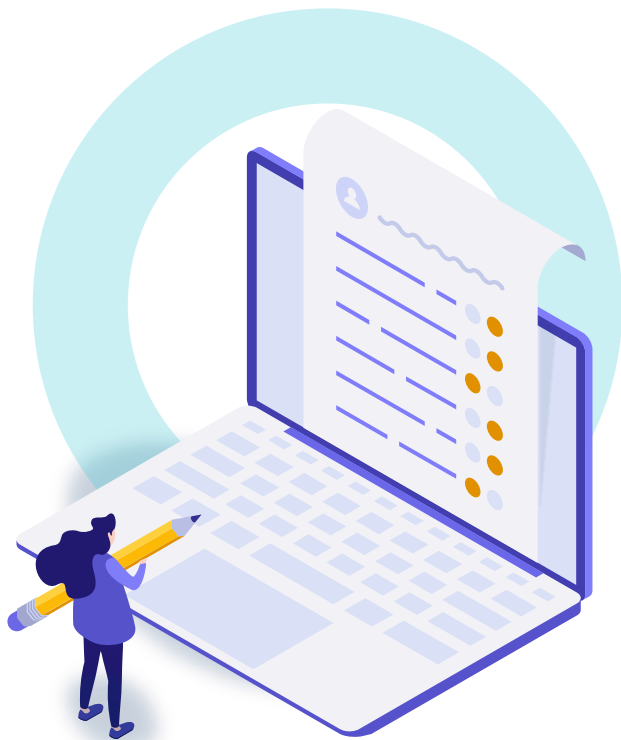




Data Excellence

Rael Elstein | Content Product Manager



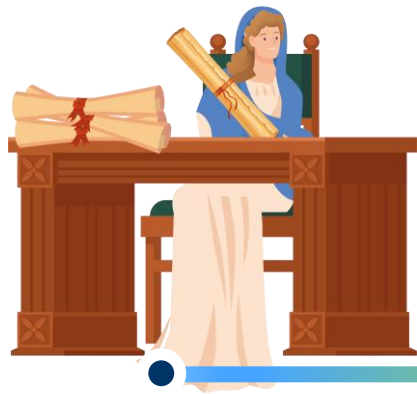


Agenda

- Starting at the Beginning
- Data Excellence (DX)
- Data Excellence Activities

In the beginning...





20



1520



1920



2022



Today...



Greater Variety
of Content

Increased
Volume of
Content

Expansion of
Informative
Metadata

Improved
Access
to Content

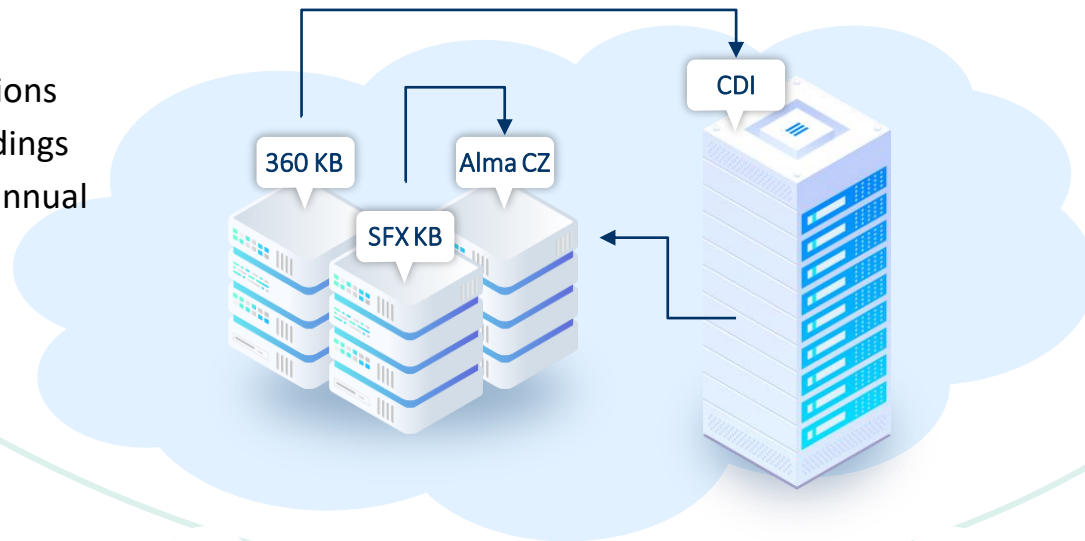


Demand for
Higher Quality
Metadata

Content and Data Across Our Services

KBs/CZ

- > 58,000 collections
- > 70 million holdings
- 15% collection annual growth



Central Discovery Index

- Articles, books, chapters, video, datasets ...
- 4.7 billion records
- 10% annual growth


**Resource
Management
Alma**


**Discovery
Primo/Primo VE
Summon**


**Research
Workflows
Esploro**


**Linking
SFX
360**


**Resource
Sharing
Rapido**

Data Excellence (DX)

Addressing the intersection between **Content**, **Technology** and **Users**
as part of a data-driven cross-company strategy



Capacity, Efficiency,
Speed and Provision,
Quality



Stronger Services



Higher User Satisfaction



Better Outcomes

Data Excellence Looking Forward



Capacity, Efficiency,
Speed and Provision,
Quality



Quicker Updates

Increase update frequency of Alma



Better Quality

Improve and expand MARC
metadata in Alma CZ



Improved Discoverability

Enhance linking and rights for CDI users



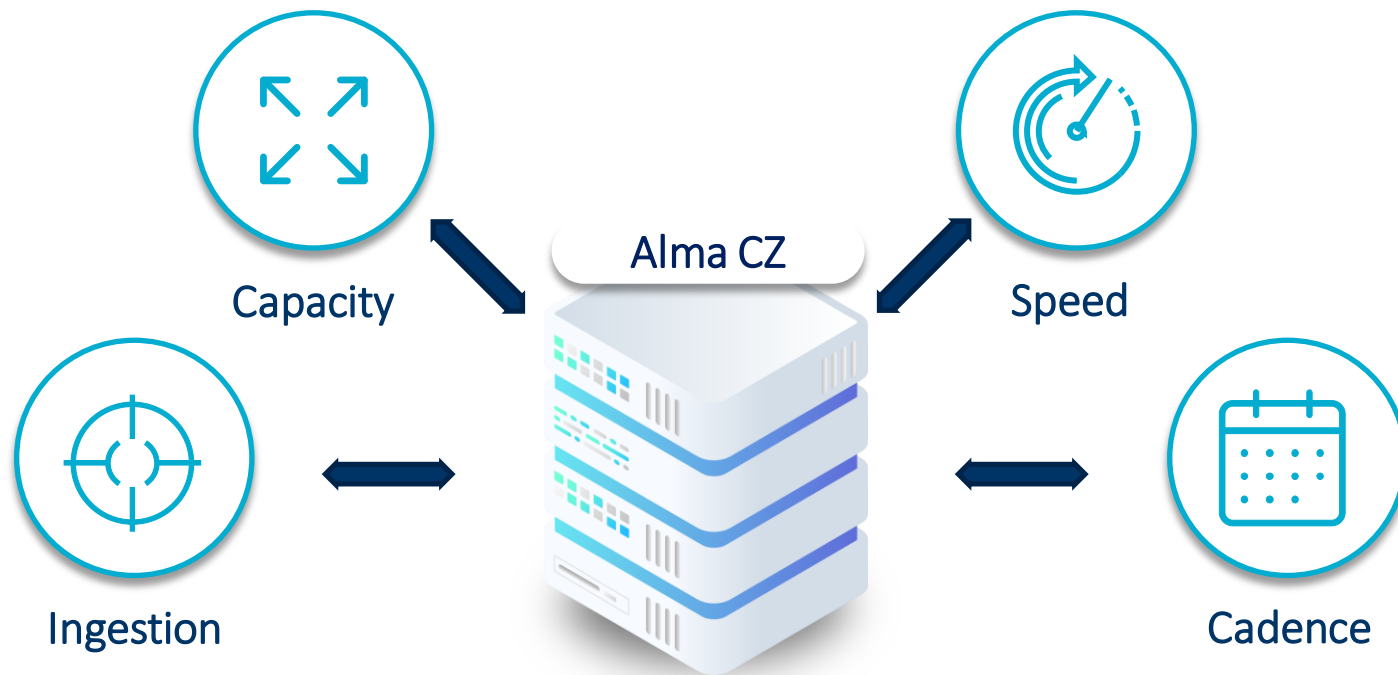
AND MORE...

Long-term Content and Data focus

Reducing Update Turnaround Time in Alma CZ



Quicker Updates



Reducing Update Turnaround Time in Alma CZ



Quicker Updates

Transition to
semi-weekly updates
directly in Alma CZ

When a provider file is
available, it will be
processed within 3 days

Pilot: **Cambridge
University Press**, to be
released in H2 2022

Gradual rollout to ensure
smooth transition and
avoid disruption

Transparent process; no
action required from
libraries or providers



Upgrading Record Metadata in Alma CZ



Extend Sources

Extend Metadata Sources

Use additional sources to enrich the records



Improve Measurement

Improve Metadata Quality Measurement

Review and improve metadata quality measurement to increase reporting accuracy



Expand Strategy

Expand Enrichment Strategy

Focus on e-books first, starting with most popular collections

Upgrading Record Metadata in Alma CZ



- Focus on **most popular e-book collections**
- Increased provider outreach
- Reanalyzing metadata quality score measurement
- Leveraging **alternative sources**

Massive enrichment of
ProQuest Ebook Central
“Express MARC” records

Utilizing Library of
Congress print records
for electronic metadata

Converting non-MARC
feeds to MARC-enabled
(e.g. Project Gutenberg)

Enhancing Linking and Rights in CDI



Improved Discoverability



Enhancing Linking



Improved Discoverability

- Released **hybrid linking** functionality (Nov 2021)
 - Over 100 collections converted to hybrid
 - Over 230 collections changes to Link in Record
 - Over 1 billion records
 - New collections released hybrid, where appropriate



Enhancing Linking



Improved Discoverability

- Supporting **Quicklinks**
 - Quicker access and fewer click with direct linking to HTML/PDF pages
 - 12 providers already supported, with over 1.5 billion records
 - Additional providers planned throughout 2022
- Expanded **provider ID-driven article-level linking** for more accurate linking for over 20 providers
 - Gale, OUP, SAGE, PQ, JSTOR, and more





Enhancing Rights in CDI

- Major **rights processing** improvements (April/May 2022)
 - Goal to reduce processing time to 24-48 hours
 - Decreased turnaround from 48-72 hours to below 50 hours
 - Additional improvements in progress



Long-Term Content and Data Focus



AND MORE

- More transparency and communication on our ongoing projects
 - Informative updates, training and webinars
- Increased engagement with the community
 - Collaboration with product and content working groups
 - NEW: CDI Advisory Group
- Ongoing and future activity
 - PQ Ebook Central release of book chapters in CDI
 - Greater transparency and clarity on collection status
 - ... and more to come!

Data Excellence (DX)



Capacity, Efficiency,
Speed and Provision,
Quality



Strongest Services



Highest User Satisfaction



Best Outcomes

Thank you!

rael.elstein@clarivate.com



ExLibris
Part of **Clarivate**