



Esploro Product Update

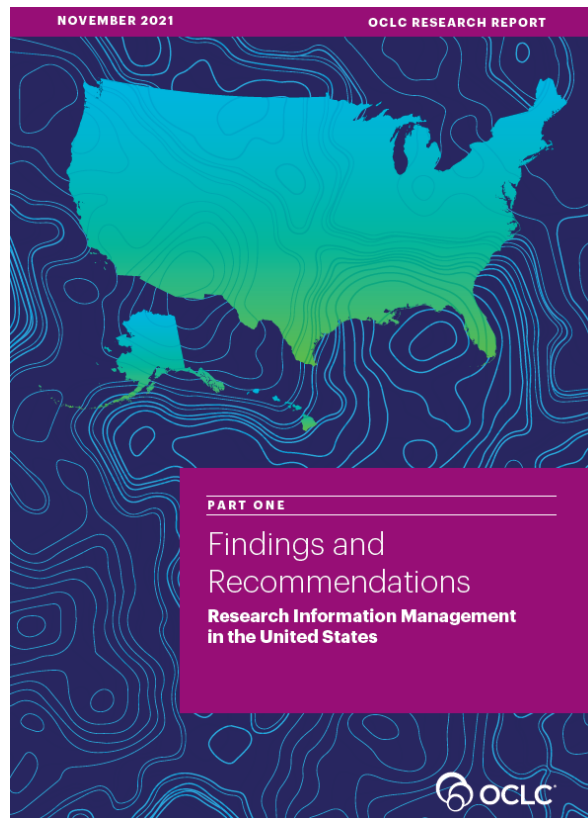
Shalhevet Bar-Asher, VP Research Information Management
Yaara Galili, Director of Product Management



Research Information Management Library roles and opportunities

RIM use cases:

- Metadata reuse
- Public portal
- Strategic reporting and decision support
- Open access workflow
- Compliance monitoring
- Faculty activity reporting (FAR)



Leading RIM Initiatives



"We wanted a RIM system that would be **comprehensive** across the entire institution, with **public facing profiles** to **highlight the expertise** of our researchers and bring **greater discovery** to research output, a system that could **facilitate data exchange** and **support open access workflows**."

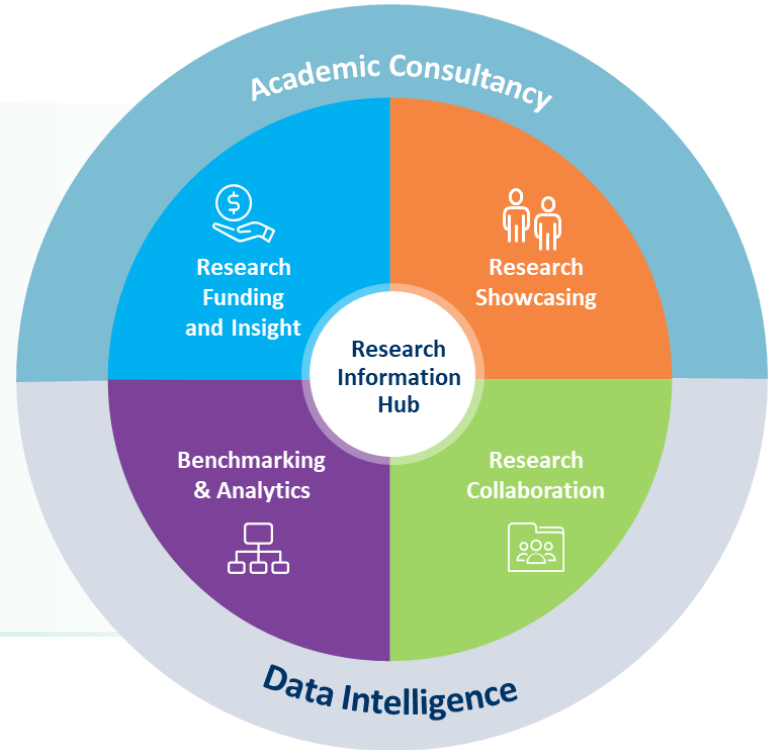
Elizabeth Gushee, Associate Dean, Digital Strategies, University of Miami Libraries

Choice-ACRL Webinar: Research Information Management: Library Roles and Opportunities:

www.choice360.org/webinars/research-information-management-library-roles-and-opportunities/

Clarivate & Ex Libris: Advancing research excellence

- Trusted, high-quality data & metadata
- Research insights & benchmarking
- Comprehensive researcher profiles
- Workflow automation
- Wide access to global funding



Clarivate & Ex Libris: Advancing research excellence

Esploro: Better data, better insights, better workflows

Showcasing *more* research outputs & *richer* profiles

Leveraging **CDI**, **Web of Science**, **Incites B&A**, and **Pivot-RP** for a broad source of scholarly data, metrics, and awarded grants

Enhancing reporting & metrics

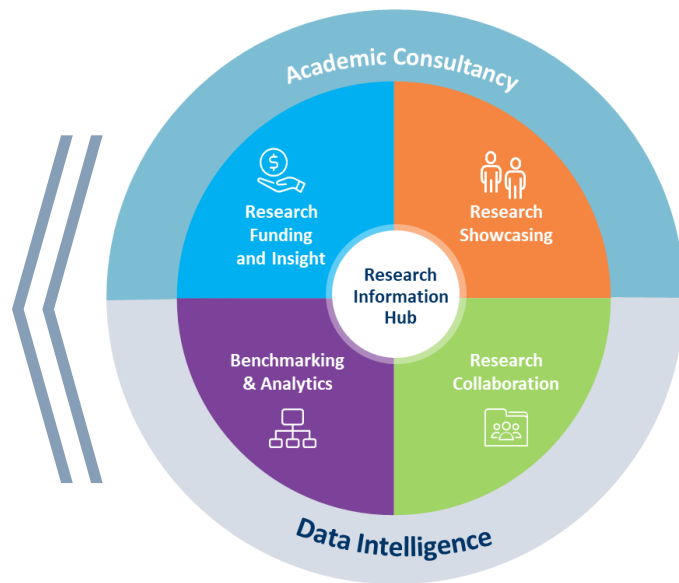
Integrating data from **InCites Benchmarking & Analytics**

Facilitating access to funding opportunities & grants data

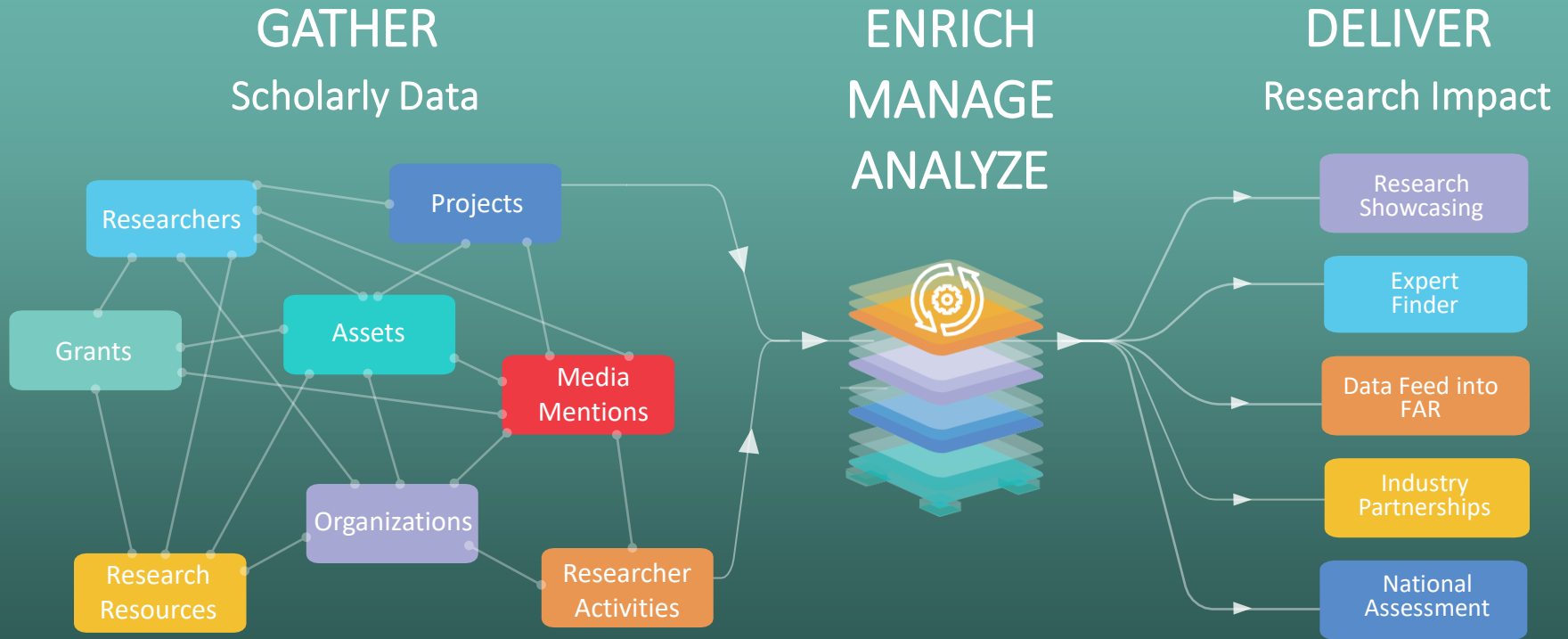
Seamless access to data from **Pivot-RP** and **Web of Science**

Extending research workflows

Leveraging **Converis** expertise to support additional research workflows



What is Esploro?



Esploro Research Information Management Solution



Expert
Finder



University
Prestige & Ranking



Data for
Activity Reporting



National
Assessment



Industry
Partnerships



Open Access
Repository



Research Portal
SEO-Friendly



Researcher
Profiles



Funding
Opportunities



Research
Analytics



APIs &
Data Exports

Research Information Hub

(Publications, Datasets, Activities, Awarded Grants, Projects, etc.)

Smart Harvesting AI

(Ex Libris Central Index, National Repositories, Disciplinary Repositories)

Direct & Mediated Deposits

(Libraries, Researchers, Assistants)

Esploro Community Worldwide



Esploro Statistics – Q1 2022 vs. Q4 2021



+17%

**Avg. Asset
Downloads
per Institution**



+26%

**Avg. Research
Assets
per Institution**



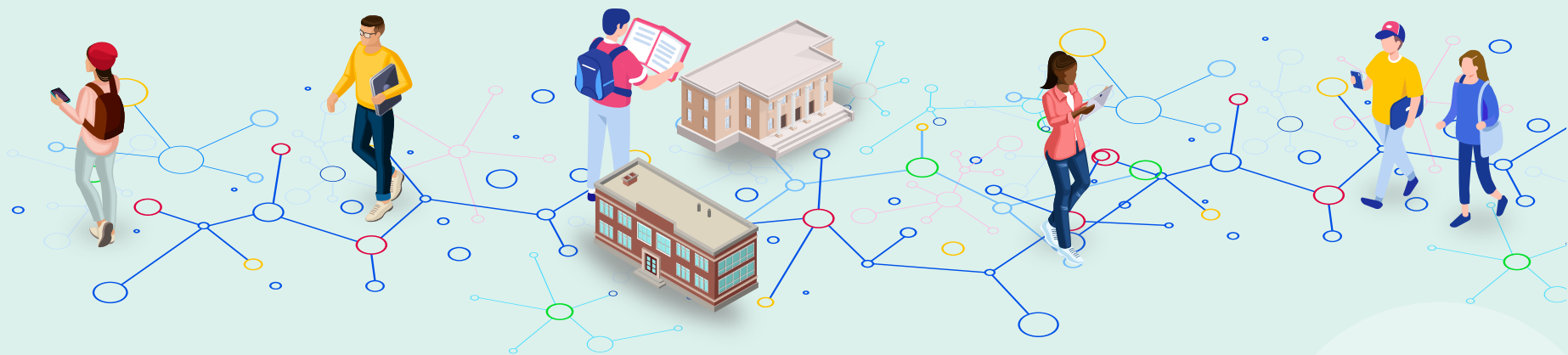
+33%

**Avg. Number of
Researchers in
Esploro**



+11%

**Avg. Portal
Pageviews
per Institution**



Esploro Demo & Roadmap

Esploro 2022 Roadmap

RESEARCH PORTAL & RESEARCHER PROFILES

- Accessibility
- Expert Finder
- SEO
- Projects & Activities in profiles
- Browse by unit
- CV Management
- Scopes

ANALYTICS

- Adding media mentions, activities and research resources
- Out of the Box Collaboration and impact Reports
- Executive Dashboard

FUNDING & RESEARCH ADMIN WORKFLOWS

- Grants Auto-Population from Pivot-RP based on ID
- National Assessment workflows – ERA
- Support for UN Sustainable Development Goals

RESEARCH INFORMATION HUB

- Multiple Authored ETD
- Students' deposits
- Asset update from Alma
- Asset updates from CDI

INTEGRATIONS

- Additional formats for OAI publishing
- Integration with Unpaywall data
- Push assets to ORCID

SMART HARVESTING

- Metadata enhancement via CDI
- Researcher approval
- Workflow to support common name

Thank you!

shalhevet.bar-asher@clarivate.com

Yaara.Galili@Clarivate.com



ExLibris
Part of **Clarivate**