



# Linked Open Data Update

Itai Veltzman, Director of Product Management, Library Solutions  
Nili Natan, Product Manager, Research & Discovery Solutions

**Alma Primo**



**ExLibris**  
Part of **Clarivate**

# Agenda



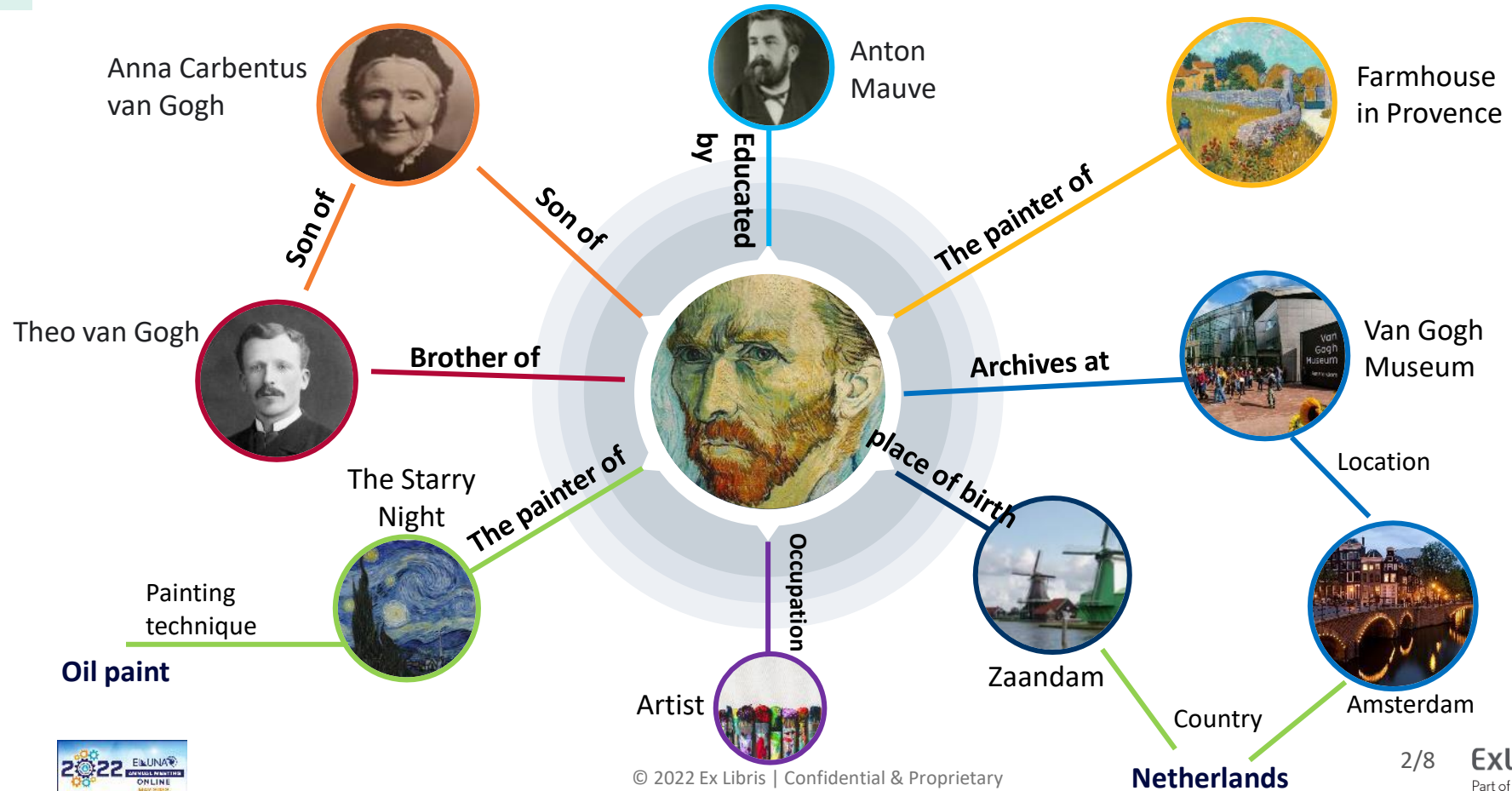
- Why Linked Open Data?
- Where we want to go?
- Where we are?
- Coming soon

We want a global metadata ecosystem that enables users to find what they need and access it in the best way.

The library vision



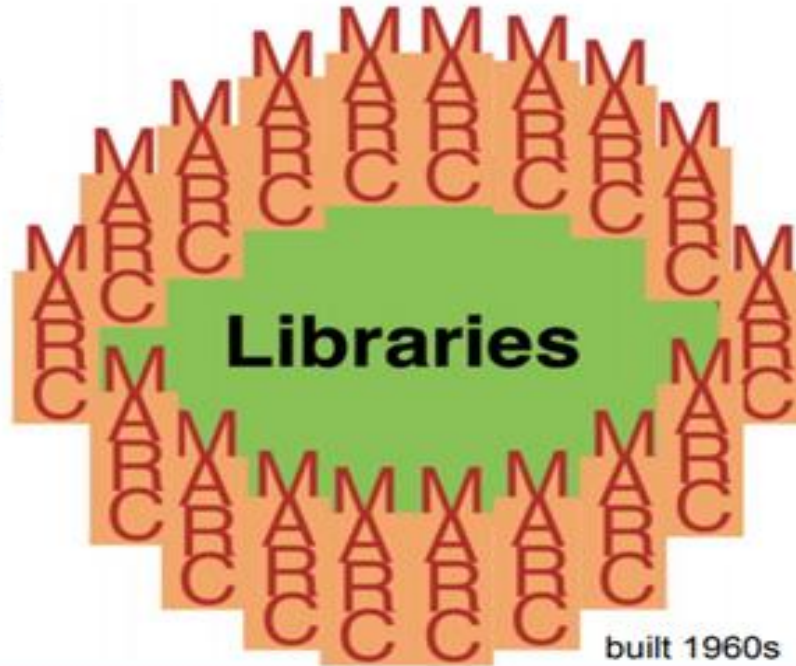
# Semantic web search – linked data as the building blocks



# Libraries are locked in the MARC fortress

## Escaping Fortress MARC

Rest of  
world



Most of  
our users,  
most of  
the time

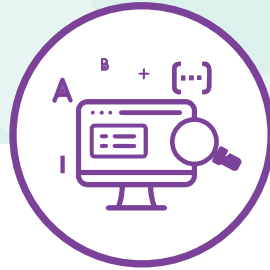
# Libraries need Linked Data



## Efficient cataloging

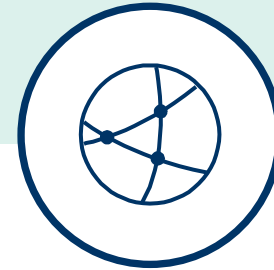
Higher accuracy with less manual work.

Easier to create relationships. Focus on special collections and unique materials.



## Better Discoverability

Display enrichment, easier navigation and accuracy. Enabling sophisticated querying making it quicker to find what you want.



## Improved interoperability

Open to the global network of data outside of libraries systems such as research.



# What exists today?



Discovery



Interoperability



Cataloging

## Records enrichment

Automatically with URIs for language, identifiers, names, and subjects



Primo

## Exposure

Allowing institution to get most of making their catalog available in search engines



Primo

## Alma Refine

Support the refine workflow within Alma. It works currently with Getty, Wikidata, and Geonames



Alma

## Publish and Export

Entire catalog:  
BIBFRAME, RDA/RDF



Alma

## REST APIs

In: BIBFRAME, RDA/RDF  
and JSON-LD



Alma

## Endpoints

Ability to reach either work,  
instance or authority



Alma

# Alma Linked Open Data Roadmap 2022



## Ability to store and have basic use for Linked Open Data records

User will be able to upload and search for a work and instance cataloged as linked open data.

It will also be possible to manage inventory and perform fulfillment workflows for these instances.

## Integrate 3<sup>rd</sup> Party Linked Data Editor

The cataloger will be able to create new linked data records and store them in Alma for use with basic functionality (e.g. Sinopia)



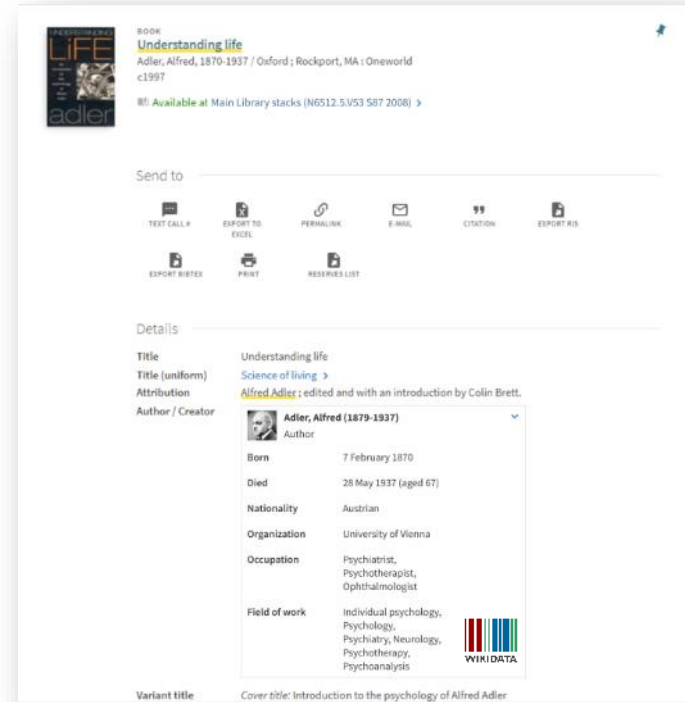
# Primo Linked Open Data Roadmap 2022



## Info card (Primo VE)\*

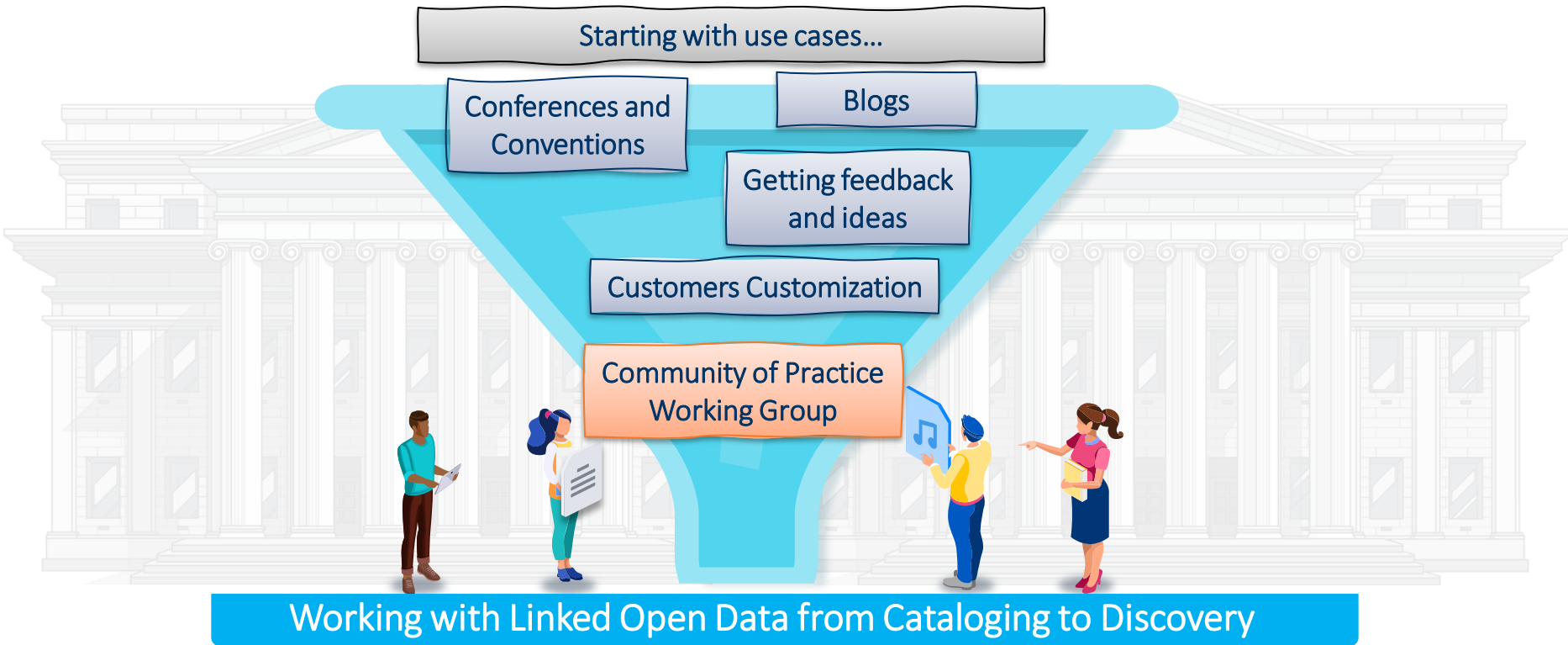
Introducing the new Info Card based on the Linked Data URI.

- Utilize Linked Data URIs to present new Information Cards in the Full Display of a record
- Enrich the display with more information on linked entities and related resources made available thanks to the URI.



\*Conceptual Mockup: Enriching the Full Record with more information from Wikidata

# Linking Together to Make the Vision a Reality



# Thank you!

---

[Itai.Veltzman@Clarivate.com](mailto:Itai.Veltzman@Clarivate.com)

[Nili.Natan@Clarivate.com](mailto:Nili.Natan@Clarivate.com)



**ExLibris**  
Part of **Clarivate**