



Transforming Your Library with Research Excellence Solutions

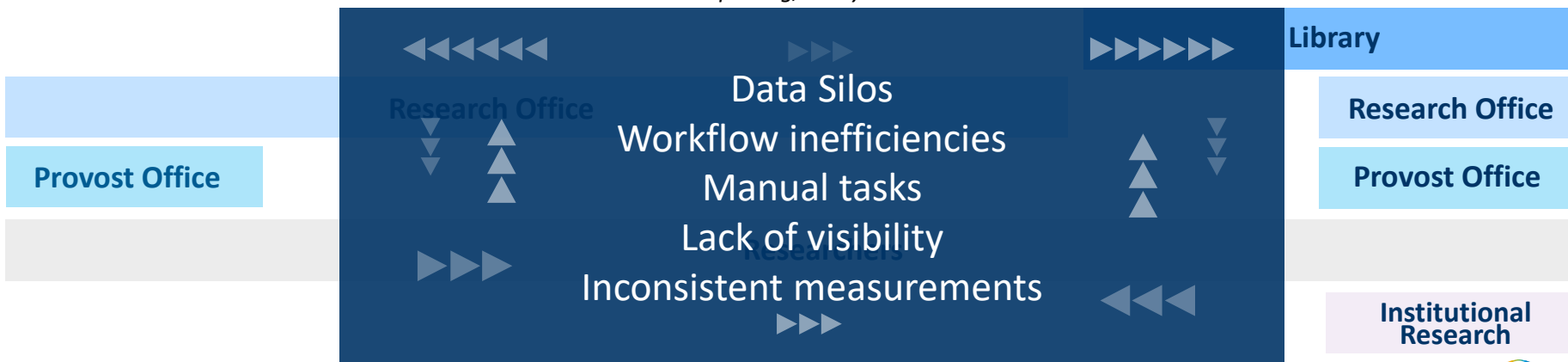
Shalhevet Bar-Asher, VP Research Information Management



The Research Flow – Institutional View



The Research Flow – Institutional View



In an Ideal World...

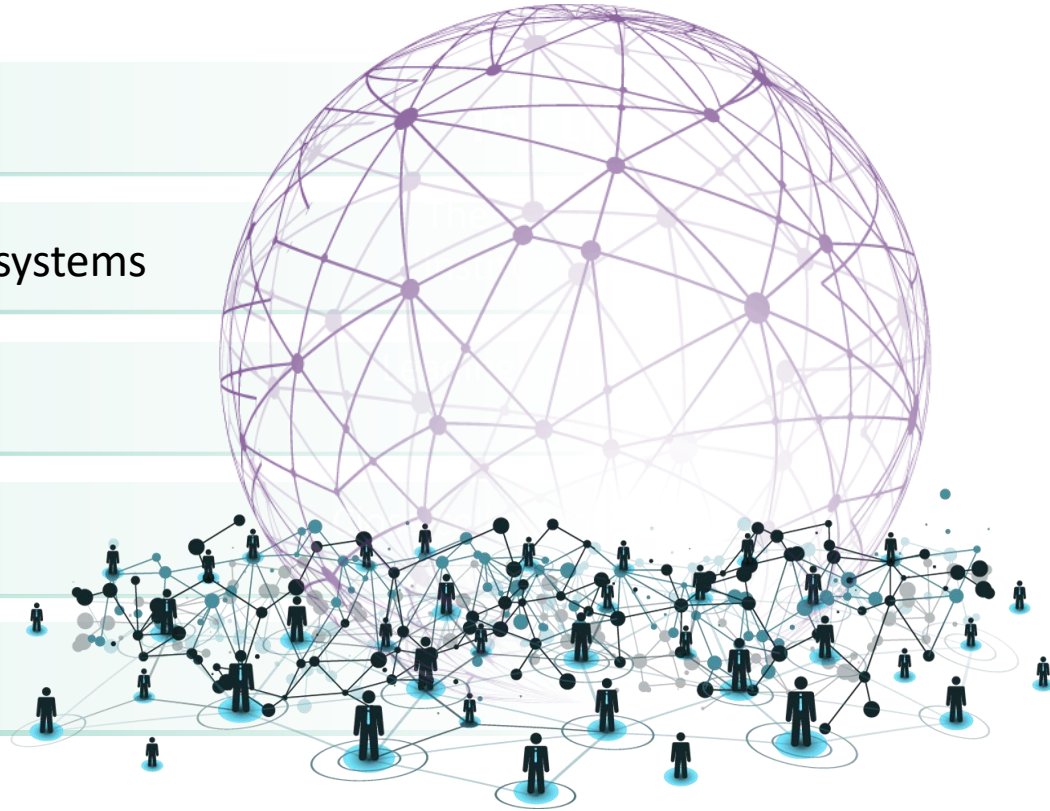
Single source of data

Enter information once, use it across systems

Integrated workflows

Consistent internal assessment

Agreed-upon external benchmarks



In an Ideal World...

Unified source of data

Enter information once, use it across systems

Integrated workflows

Consistent internal assessment

Agreed-upon external benchmarks

The Library:

The data steward of
institutional records

-

Leading institutional RIM
initiative

-

Close collaboration with
Office of Research &
Provost

Supporting Library's Mission



Connecting libraries
with faculty & scholars

[Leganto](#) | [Esploro](#)

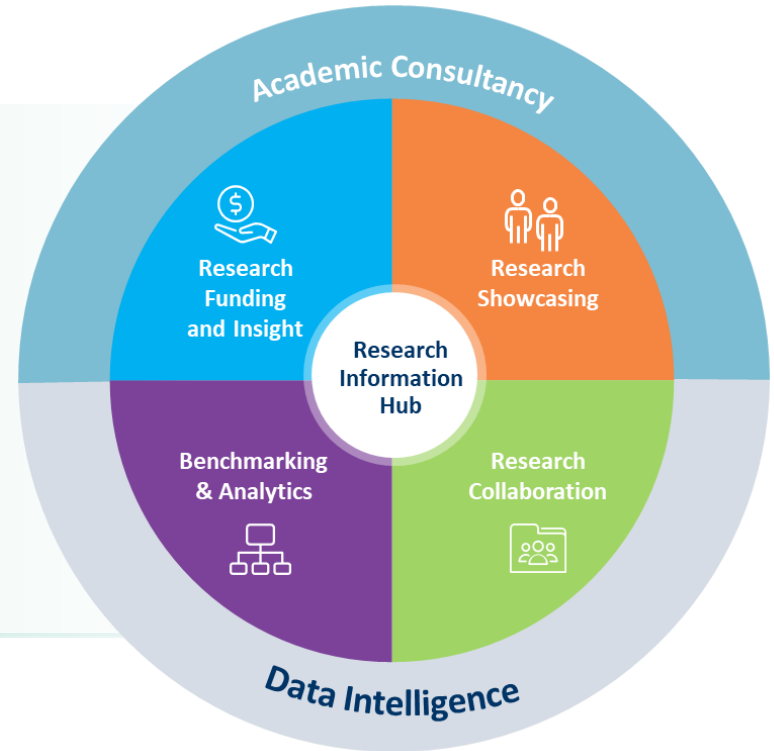


Delivering data & insights for
research offices & scholars

[Web of Science](#) | [InCites B&A](#)

Clarivate & Ex Libris: Advancing research excellence

- Trusted, high-quality data & metadata
- Research insights & benchmarking
- Comprehensive researcher profiles
- Workflow automation
- Wide access to global funding



Connected to the ecosystem via open APIs



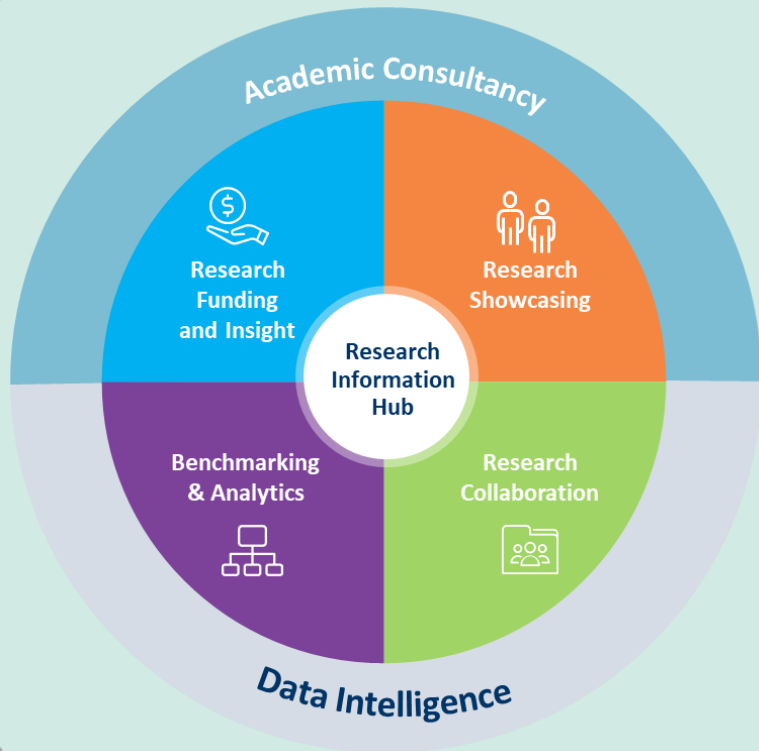
 External repositories

 Research administration

 Public profiles

 HR systems

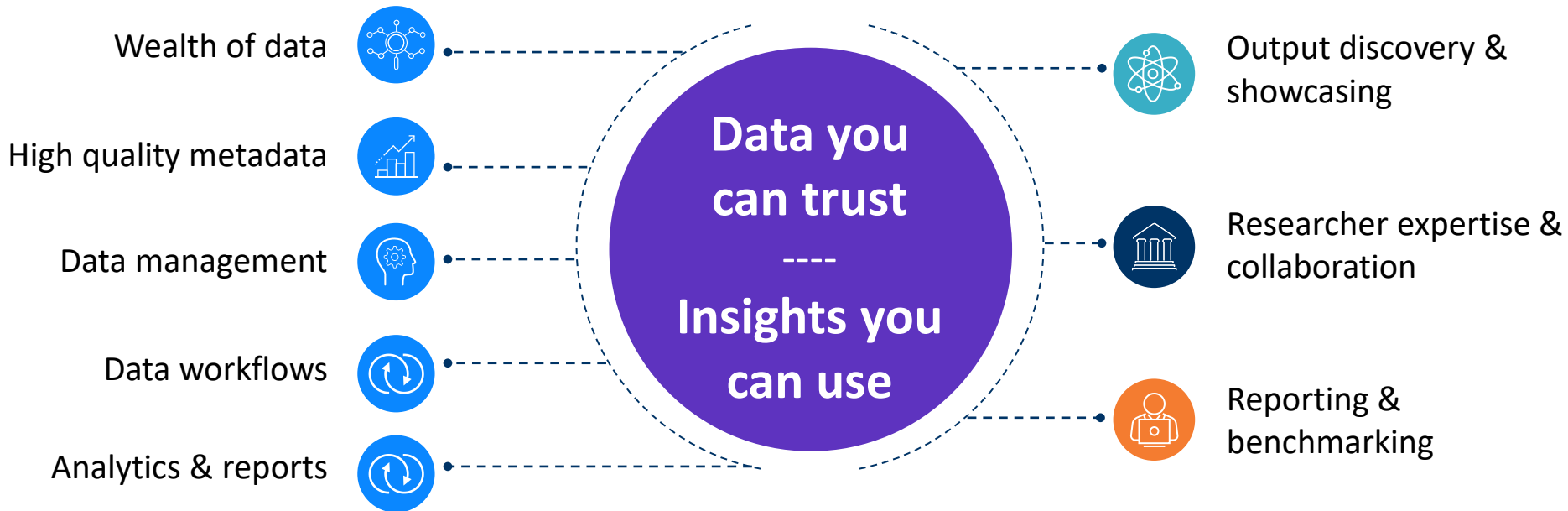
 Search engines





The Key Ingredients

Connecting the Dots: Better data, better insights



Exploro | Web of Science | InCites B&A | Pivot-RP

Outputs -- Researchers -- Research Units -- Metrics -- Research Trends -- Funding

Output Discovery & Showcasing

Esploro | Web of Science

Use case examples:

Showcasing & discovery of all institutional research

Finding highly cited outputs in high impact journals

Reusing metadata

Identifying outputs resulting from specific grants

The screenshot displays the Esploro interface with the following components:

- Navigation:** Output, Awards, Media, Projects, Activities
- Assets List:**
 - Publication (15)
 - Conference/Event (6)
 - Creative Work (3)
 - Patent (1)
 - Posted Content (1)
 - Dataset (1)
- Journal Article 1:**
 - Title:** Imposing Advice on Powerful People
 - Authors:** by Lyn M Van Swol, Andrew Prahli, Erina L MacGeorge and Sara Elizabeth Branch
 - Published:** 02/09/2019
 - Abstract:** This paper examines how advice recipients' feelings of power and the solicitation of advice affects the perception of advice. Participants were primed for low or high power, wrote about a personal problem and shared it online to a peer. The peer was a confederate who gave advice. Advice was either permitted (participant was asked if they wanted advice) or imposed (participant said they did not want advice, but advice was given). Participants reported higher utilization intentions and positive emotions for imposed advice than permitted or guaranteed advice. High power participants had lower intentions than low power participants to use imposed advice, especially when disclosing a more personal problem.
- Journal Article 2:**
 - Title:** Connecting in the Twitterverse: Using Twitter to satisfy unmet belonging needs
 - Authors:** by Nicole E Iannone, Megan K McCarty, Sara Branch and Janice R Kelly
 - Published:** 2018
 - Abstract:** The current study explored how social media use can help meet needs for belonging. We predicted that those who use social media more frequently would report higher levels of belonging and lower levels of loneliness.
- Citation Network:**
 - In Web of Science Core Collection:** 6 Citations
 - Times Cited in All Databases:** 6
 - Cited References:** 31
 - View Related Records:** See more times cited

Researcher Expertise & Collaboration

Esploro | InCites B&A | Pivot-RP

Use case examples:

Finding experts
and collaborators

Benchmarking research
self performance

Accessing relevant
funding opportunities

Collecting data
for evaluation

New search - Research units Discover Funding

Edit profile

Overview Output Awards Media Projects Activities

Expertise

Dr. Branch has expertise in social and personality psychology with a focus on interpersonal relationships, communication studies, and motivation. She is also active in the scholarship of teaching and learning. Her research examines how relationship context affects support outcomes, particularly in regard to advice as a support function. Her research on motivation examines both person and situational factors that affect student interest and persistence in the STEM fields as well as students' selection and use of learning strategies in challenging or difficult courses. Over the course of her academic career, Dr. Branch has conducted research and published in the fields of psychology, engineering education, and communication studies.

Sara Elizabeth Branch

Assistant Professor,
Department of Psychology,
University of Esploro

Human Learning and Memory / Interpersonal Communication / Learning Motivation / Social

Global ID
0000-0002-1712-5817

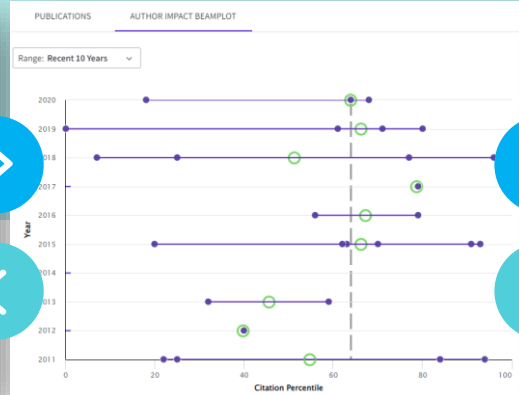
Email
sara.branch@exlibrisgroup.com

Phone
Mobile 847-257-5133

Address
Gulick Hall
Office 204
University of Esploro
Mississippi, MS 39268

Courses Taught
Course Instructor at Hobart and William Smith Colleges

- Introduction to Psychology
- Introduction to Personality Psychology
- Topics in Personality Psychology (Personality and Close Relationships)
- Research Methods in Personality Psychology



Funding Opportunities

These funding opportunities are part of a curated search created by your Pivot-RP administrator. You can also visit your Pivot-RP profile to set up custom funding searches, view more recommended funding and configure weekly email alerts.

Department of Psychology - Funding from Pivot-RP

Department of Psychology - Funding from Pivot and Research Professional

Department of Psychology - Funding from Pivot and Research Professional and Personality Psychology (Esploro)

Division 39 Grant
American Psychological Foundation (APF)
American Psychological Association (APA)

Clinical Research Professor Award
American Cancer Society (ACS)

Marshall Public Policy Fellowship
for the Psychological Study of Social Issues (SPSSI)

Psychology Research Student Awards
Cognitive Psychology Center
University of Pennsylvania

Psychosocial Research Grants (PSR) - PSR Pilot Grants
Craig H. Nelson Foundation

Reporting & Benchmarking

Esploro | InCites B&A

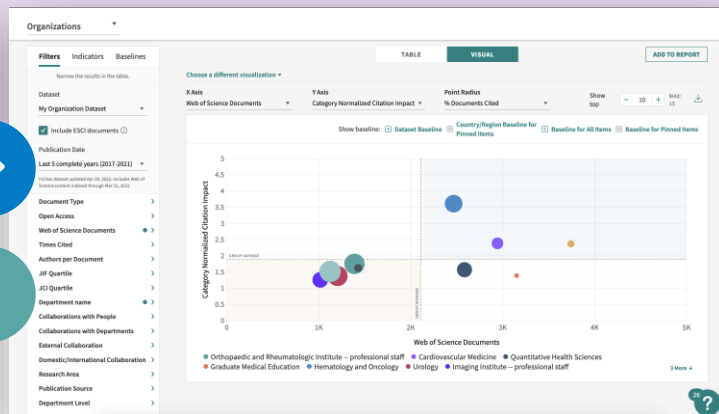
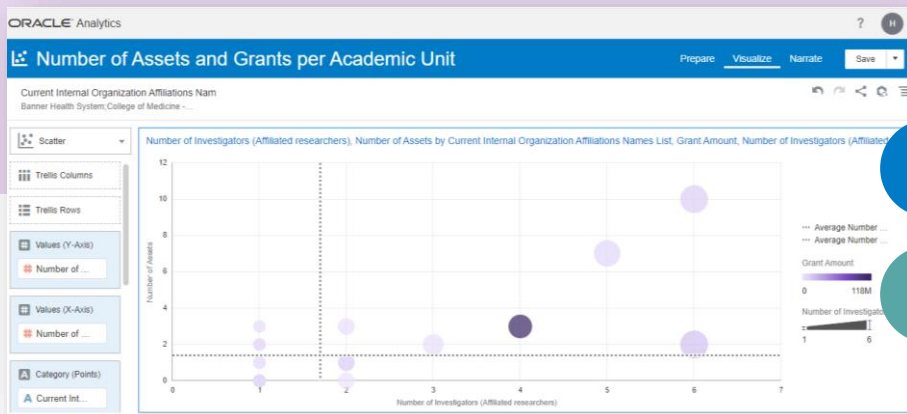
Use case examples:

Identifying units with highest impact

Benchmarking performance vs. other institutions

Comparing institutional vs. global research trends

Automatically syncing organization structure



The Research Flow – Institutional View



Unified source of data
Automated data population
Connected workflows
Visibility into research activities
Consistent measurements

Library

Research Office

Provost Office

Institutional
Research

One more thing...

Research Professional News: Now available for U.S. institutions!

The screenshot shows the Research Professional News website. At the top, there's a navigation bar with 'Research Professional News' and the Ex Libris logo. Below that, a green bar highlights 'World News'. The main content area is divided into several sections: 'USA' news, 'Opinion', 'Latest', and a 'Not yet a subscriber?' sidebar. The 'USA' section features articles like 'US urged to reverse decline in spending on planetary science' and 'US news roundup: 22-28 April'. The 'Opinion' section has 'The brilliance and absurdity of science in Seinfeld'. The 'Latest' section includes 'Industry calls for EU-US cooperation on tech research' and 'Academies call for revamp of education statistics agency'. The sidebar asks about subscription options.

- Global and national research policy news
- Independent commentary and analysis
- Funding insights from experts in the field

Trusted intelligence for making better decisions



Thank you!

shalhevet.bar-asher@clarivate.com



ExLibris
Part of **Clarivate**