



Update on Linked Open Data

Itai Veltzman – Director, Product Management

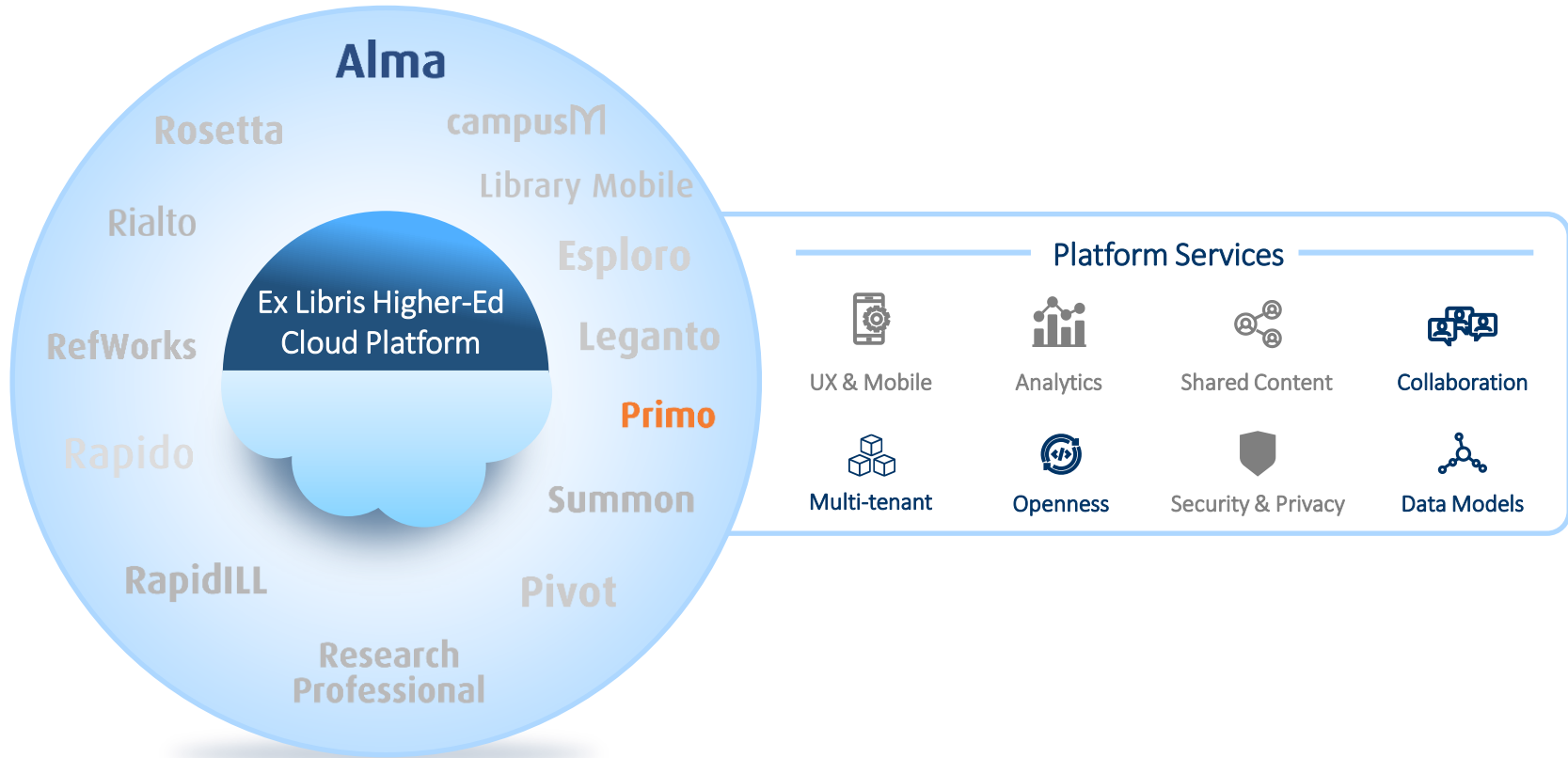


Agenda



- Overview
- Development During 2022
- Roadmap for 2023 and Beyond
 - MARC Enrichment
 - End to End Workflow
 - Knowledge Graph
- Collaboration with the Community

Ex Libris Higher-Ed Cloud Platform



We want a global metadata ecosystem that enables users to find what they need and access it in the best way.

The library vision



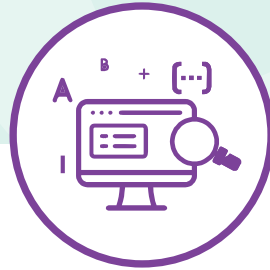
Libraries Need Linked Data



Efficient Cataloging

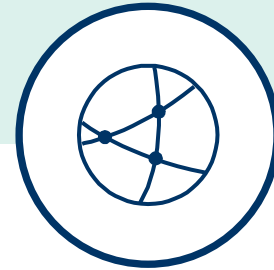
Higher accuracy with less manual work.

Easier to create relationships. Focus on special collections and unique materials.



Better Discoverability

Display enrichment, easier navigation and accuracy. Enabling sophisticated querying making it quicker to find what you want.



Improved Interoperability

Open to the global network of data outside of libraries systems such as research.

Alma Linked Open Data Development in 2022



Ability to store and have basic use for Linked Open Data records

User will be able to upload and search for a work and instance cataloged as linked open data.

It will also be possible to manage inventory and perform fulfillment workflows for these instances.

Integrate 3rd Party Linked Data Editor

The cataloger will be able to create new linked data records and store them in Alma for use with basic functionality (e.g. Sinopia)

** Disclaimer: Roadmap may be subject to change without prior notice at the sole discretion of Ex Libris.*

Primo Linked Open Data Development in 2022



Info card (Primo VE)*

Introducing the new Info Card based on the Linked Data URI.

- Utilize Linked Data URIs to present new Information Cards in the Full Display of a record
- Enrich the display with more information on linked entities and related resources made available thanks to the URI.

The screenshot displays a Primo VE record for the book "Understanding life" by Alfred Adler. The record is enriched with Wikidata information, including a detailed author biography, birth and death dates, and related persons. The interface includes a "Send to" section with various sharing options (PDF, EPUB, etc.) and a "Details" section with metadata. A "Related Persons" section lists other individuals associated with the author, and a "Similar Persons" section lists related authors. A Wikidata logo is visible in the bottom right corner of the record display.

Field	Value
Title	Understanding life
Title (uniform)	Science of living
Attribution	Alfred Adler ; edited and with an introduction by Colin Brett.
Author / Creator	Adler, Alfred, 1870-1927
Variant title	Cover title: Introduction to the psychology of Alfred Adler
Published	Oxford ; Rockport, MA : OneWorld, c1997.
Description	xviii, 168 p. ; 22 cm.
Language	English
Notes	Includes bibliographical references (p. 165-186) and index. Originally published: The science of living, 1927.
Subjects	Psychoanalysis

Field	Value
Author	Adler, Alfred (1870-1927)
Birth	7 February 1870
Death	28 May 1927 (aged 57)
Nationality	Austrian
Occupation	Psychiatrist, Psychotherapist, Ophthalmologist
Field of work	Individual psychology, Psychology, Neurology, Psychoanalysis

Field	Value
Related Persons	Adler, Alexandra (1905-2000), Family relationship Bong, Martine de (no author) Brunner, Almut (no author) Brunner, Reinhard (no author) Bates, Wilfred (no author) Elin, Gösta (no author)

Field	Value
Similar Persons	Ansbacher, Hans Ludwig (1904) Furtmüller, Carl Metzger, Wolfgang (1899-1976)

* *Disclaimer: The mockup is conceptual. It shows record enrichment with information from Wikidata*

Linked Open Data Roadmap 2023 and Beyond*

MARC Enrichment

Improvement to URI
addition to records

End to End Workflow

From cataloging via inventory
management to discovery



Knowledge Graph

Expose the catalog as a
triplestore

* *Disclaimer: Roadmap may be subject to change without prior notice at the sole discretion of Ex Libris.*



MARC Enrichment

URIs in Ex Libris Products

Report of current conditions and best practices

Researched and Prepared By:

Laura Akerman, Greta Heng, Nancy Fallgren, K.T. Lam, Amanda Xu, Lihong Zhu; contributed to editing final report, Xiaoli Li and Laura Akerman

Presented By:

The Linked Open Data Community of Practice (LOD CoP) Working Group

<https://drive.google.com/file/d/1F9gJIFr-azwBbQawJBRVQ8sXidMJTjY/view>



Thank you!

URIs issues - Ex Libris backlog



URI form/formatting

- Invalid prefix '(uri)' appearing before URIs (November 2022 release)
- Query (search) URLs are added instead of URIs identifying entities



Placement of URIs

- Enrichment causes duplicated URIs in the same field (Released)
- URIs are added where \$0 is not valid
- URIs for subject headings partially matched
- Multiple URIs cause problems with conversion



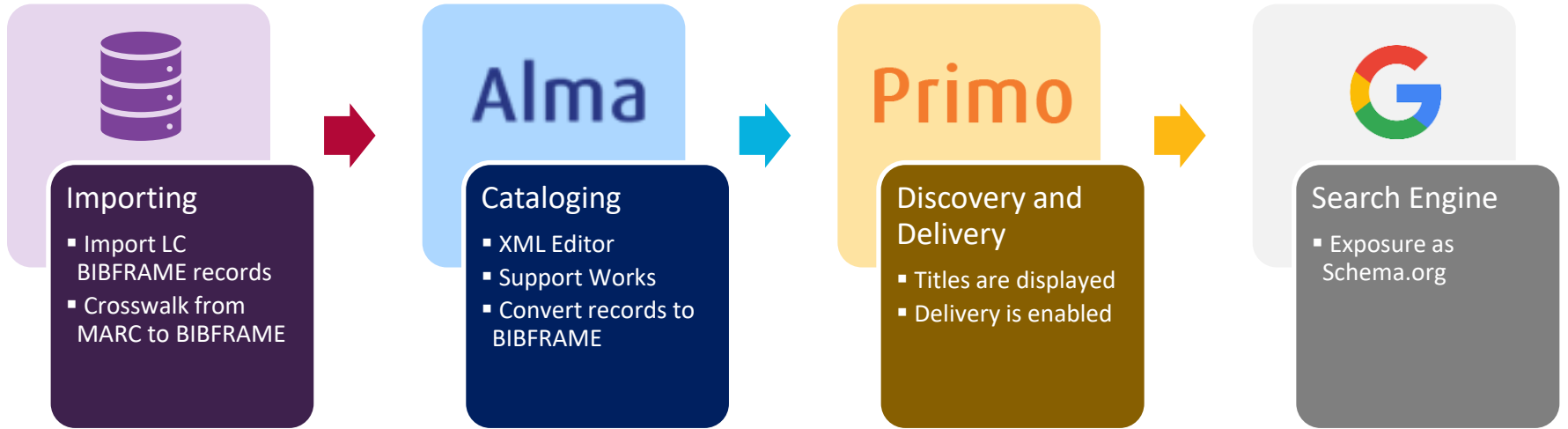
Functional

- Use of Subfield 1 for "Real World Object" URIs



End to End Workflow

End to End Workflow





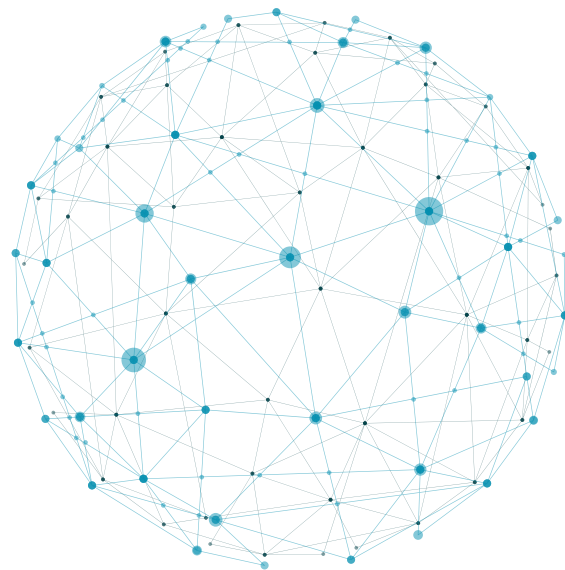
Into the future ... Knowledge Graph

Knowledge Graph – the catalog as a triplestore

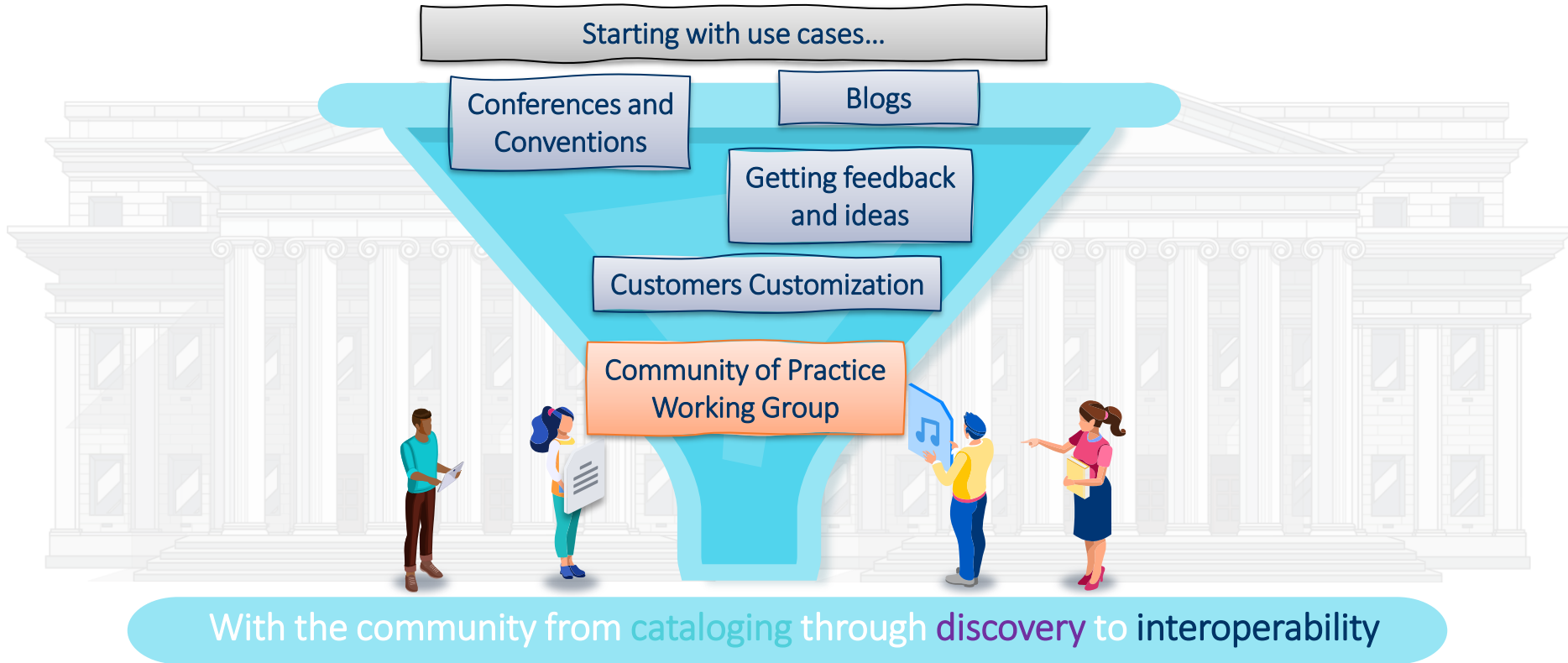


Interoperability

- Starting with a proof of concept for an institution catalog
- We assume multi formats cataloging of MARC and BIBFRAME. The catalog will be transformed to BIBFRAME and stored in the triplestore.
- We are aiming for a collaborative knowledge graph in the future



Linking Together to Make the Vision a Reality



Thank you!

Itai.Veltzman@Clarivate.com

