



# Rosetta 8.0 Highlights

July '23



## Contents

Preservation .....	3
Assign Existing Risk to Format.....	3
Add Reason to Descriptive Metadata Edit .....	3
Data Management .....	4
Enhance Itemized Set Functionality.....	4
Structural IEs .....	5
Parent Assignment Task.....	5
Advanced Ordering .....	5
Pagination for Structural IE Children .....	6
Filter Structural IE Report by Root IE .....	6
Integrations.....	7
REST APIs - User Management.....	7
REST APIs – Producer Management .....	7
PRODUCER .....	7
CONTACT .....	8
PRODUCER AGENTS .....	8
PRODUCER PROFILES .....	8
REST APIs – Rosetta Version API .....	8
Infrastructure .....	9
3 <sup>rd</sup> Party Upgrades .....	9
Additional.....	9

# Preservation

## Assign Existing Risk to Format

An existing risk can be assigned to a file format from the format's Risk Identifiers tab. This feature enhances the capability to assign a risk to multiple formats, introduced in Rosetta version 7.4, which allowed assigning multiple formats from the risk identifiers page.

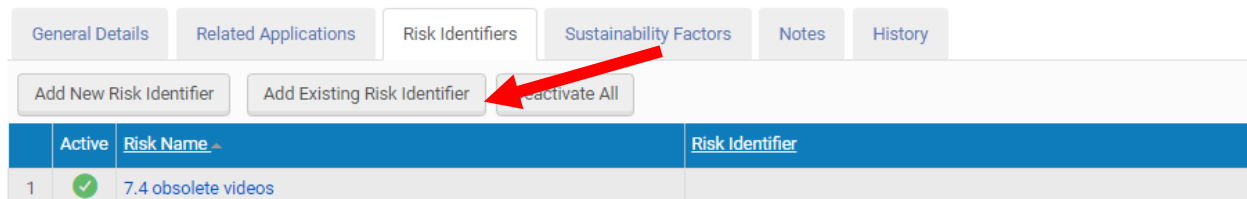


Figure 1 Add existing risk identifier from format editor

## Add Reason to Descriptive Metadata Edit

Users can now add, either manually or via a batch process, a reason for a descriptive metadata edit on IEs. The following workflows are included:

1. Add a reason in the web editor when adding / updating / removing descriptive metadata
2. Add a reason text field parameter to the `DCReplacePlugin_Task`

A single reason for all metadata updates per commit will be included in the equivalent event created for the action.



Figure 2 Add reason to MD change

# Data Management

## Enhance Itemized Set Functionality

Improved user experience for managing itemized sets, allowing users to:

- Personalize sort routine and metadata fields displayed in the results page
- Export set members to a file
- Delete set members via file upload
- Change default paging size and jump to specific page numbers

Itemized Set: 8.0 Itemized Set

Sort Columns

Set Level: File

Sort By: [ ] Asc

Then Sort By: [ ] Asc

Then Sort By: [ ] Asc

Then Sort By: [ ] Asc

Save Sort Preferences

Clear Sort Apply Sort

Members [ ] [ ] [ ]

View Default Paging 1 - 10 of 57 Records 1 2 3 > >>

	<input type="checkbox"/>	File.PID	File Original Name	File Extension	File MIME Type	File Size Bytes	IE.PID			
1	<input type="checkbox"/>	FL17836	Sanity_Test (1).pdf	pdf	application/posts...	24962	IE17834	View	Editor	More Actio...
2	<input type="checkbox"/>	FL20037	Unpub Cartoon 1.TIF	TIF	image/tiff	37756	IE20035	View	Editor	More Actio...
3	<input type="checkbox"/>	FL23900	funding_form.pdf	pdf	application/pdf	452651	IE23898	View	Editor	More Actio...
4	<input type="checkbox"/>	FL23901	Blue hills.jpeg	jpeg	image/jpeg	28521	IE23898	View	Editor	More Actio...
5	<input type="checkbox"/>	FL23902	Sunset.jpg	jpg	image/jpeg	122631	IE23898	View	Editor	More Actio...
6	<input type="checkbox"/>	FL23903	Raider.jp2	jp2	image/jp2	355171	IE23898	View	Editor	More Actio...
7	<input type="checkbox"/>	FL23904	Hayal.mp3	mp3	audio/mpeg	314288	IE23898	View	Editor	More Actio...
8	<input type="checkbox"/>	FL23905	VIDEO0039.mp4	mp4	video/mp4	195261	IE23898	View	Editor	More Actio...
9	<input type="checkbox"/>	FL23906	license.txt	txt	text/plain	11725	IE23898	View	Editor	More Actio...
10	<input type="checkbox"/>	FL24260	Blue hills.jpeg	jpeg	image/jpeg	28521	IE24270	View	Editor	More Actio...

Delete Selected Delete Set Members from File

1 - 10 of 57 Records 1 2 3 > >>

Back Add Set Members from Search Add Set Members from File

Figure 3 Itemized Sets

# Structural IEs



## Parent Assignment Task

A new task 'Assign parent IE by PID' assigns Child IEs to Parent IEs according to the parent IE's PID indicated on the child IE's DC Metadata.

## Advanced Ordering

Customers can reorder and set an explicit order sequence of structural IEs' children in the Editor:

Add Children Remove Selected

	<input type="checkbox"/>		Title	PID	IE Entity Type	IE Classification Type	Order Sequence	Editor	More Actions
1	<input type="checkbox"/>	⋮	Images	IE90054	Picture	Structural	1	Editor	More Actions
2	<input type="checkbox"/>	⋮	Web	IE90046	Picture	Structural	2	Editor	More Actions
3	<input type="checkbox"/>	⋮	PDFs	IE90042	Picture	Structural	3	Editor	More Actions



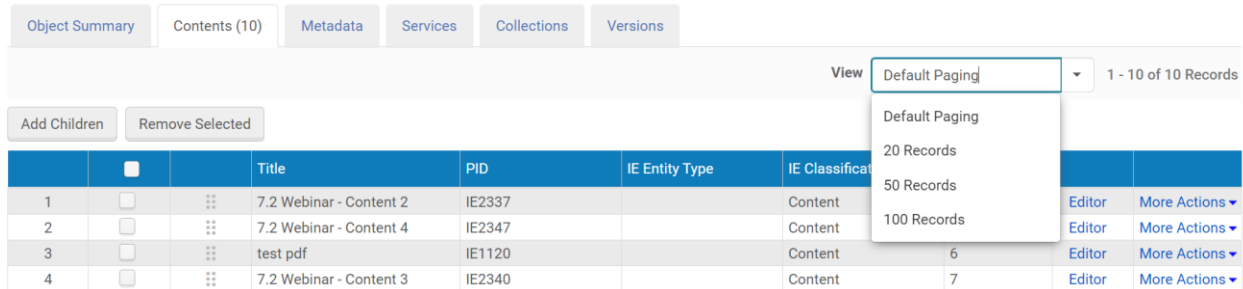
Reorder child IE IE90054 from order sequence 1 to

\* New Order Sequence

Close Order Sequence Gap After Reorder ⓘ

Cancel Save

## Pagination for Structural IE Children

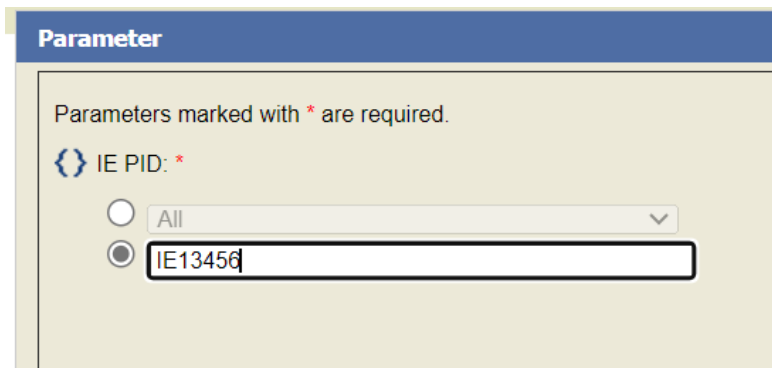


The screenshot shows a web interface with a navigation bar containing tabs: Object Summary, Contents (10), Metadata, Services, Collections, and Versions. Below the tabs are buttons for 'Add Children' and 'Remove Selected'. A table displays four rows of data. A 'View' dropdown menu is open, showing options for 'Default Paging', '20 Records', '50 Records', and '100 Records'. The table columns include checkboxes, a grid icon, Title, PID, IE Entity Type, IE Classification, and actions like 'Editor' and 'More Actions'.

	<input type="checkbox"/>	⋮	Title	PID	IE Entity Type	IE Classification		
1	<input type="checkbox"/>	⋮	7.2 Webinar - Content 2	IE2337		Content		Editor More Actions
2	<input type="checkbox"/>	⋮	7.2 Webinar - Content 4	IE2347		Content		Editor More Actions
3	<input type="checkbox"/>	⋮	test pdf	IE1120		Content	6	Editor More Actions
4	<input type="checkbox"/>	⋮	7.2 Webinar - Content 3	IE2340		Content	7	Editor More Actions

## Filter Structural IE Report by Root IE

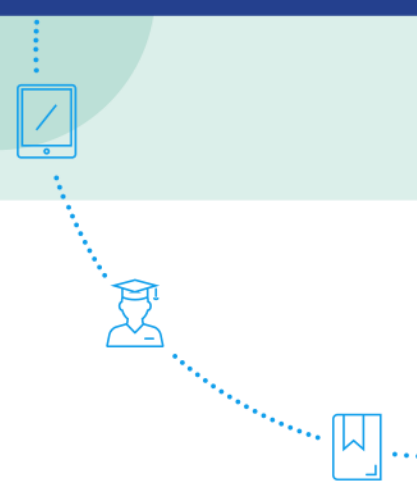
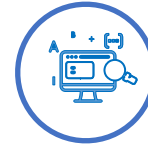
The structural IEs report can receive an optional parameter of the root IE to display descendant IEs of the given root IE.



The screenshot shows a 'Parameter' form with a blue header. Below the header, it says 'Parameters marked with \* are required.' There is a label 'IE PID: \*' with a curly brace icon. Below this, there are two radio buttons. The first radio button is unselected and is next to a dropdown menu showing 'All'. The second radio button is selected and is next to a text input field containing 'IE13456'.

Figure 4 IE filter for structural IEs report

# Integrations



## REST APIs - User Management

A new set of RESTful APIs for users management, providing the following services:

- **Creates a new user**  
`POST rest/v0/users`
- **Retrieves a list of all roles**  
`GET rest/v0/users/roles/{role_id}`
- **Retrieves a user's roles**  
`GET rest/v0/users/{user_id}/roles`
- **Retrieves a user's role's details**  
`GET rest/v0/users/{user_id}/roles/{role_id}`
- **Update a user's role**  
`PUT rest/v0/users/{user_id}/roles/{role_id}`
- **Removes a role from a user**  
`DELETE rest/v0/users/{user_id}/roles/{role_id}`
- **Retrieves a list of all users**  
`GET rest/v0/users`

## REST APIs – Producer Management

A new set of RESTful APIs for producers management, providing the following services:

### PRODUCER

- **Get a producer's details**  
`GET rest/v0/producers/{producer_id}`
- **Get a list of producers**  
`GET rest/v0/producers`
- **Create a new producer**  
`POST rest/v0/producers`
- **Update an existing producer's information**  
`PUT rest/v0/producers/{producer_id}`
- **Delete an existing producer**  
`DELETE rest/v0/producers/{producer_id}`
- **Removes a role from a user**

```
DELETE rest/v0/users/{user_id}/roles/{role_id}
```

- **Retrieves a list of all users**  
GET rest/v0/users

## CONTACT

- **Get a producer's contact details**  
GET rest/v0/producers/{producer\_id}/contacts/{contact\_id}
- **Link/Add a new contact to a producer**  
POST rest/v0/producers/{producer\_id}/contacts
- **Unlink/Remove a contact from a producer**  
DELETE rest/v0/producers/{producer\_id}/contacts/{contact\_id}

## PRODUCER AGENTS

- **Get a producer's agent details**  
GET rest/v0/producers/{producer\_id}/agents/{agent\_id}
- **Get a producer's list of agents**  
GET rest/v0/producers/{producer\_id}/agents
- **Link/Add a new agent to a producer**  
POST rest/v0/producers/{producer\_id}/agents
- **Unlink/Remove an agent from a producer –**  
DELETE rest/v0/producers/{producer\_id}/agents/{agent\_id}

## PRODUCER PROFILES

- **Get producer profile details**  
GET rest/v0/producers/producer-profiles/{producer\_profile\_id}
- **Get list of producer profiles**  
GET rest/v0/producers/producer-profiles
- **Get producer profile's material flows**  
GET rest/v0/producers/producer-profiles/{producer\_profile\_id}/material-flows

# REST APIs – Rosetta Version API

A new REST API for retrieving Rosetta version, required for automating workflows coupled to specific Rosetta versions.

- **Retrieves general configuration and system information, currently including Rosetta version**  
GET rest/v0/conf/general

Example response:

```
<?xml version="1.0" encoding="UTF-8" standalone="yes"?>
<general>
  <rosetta_version>8.1.0</rosetta_version>
</general>
```



# Infrastructure



## 3<sup>rd</sup> Party Upgrades

As always, Rosetta is aligned with the latest 3<sup>rd</sup> party components in order to provide the most secure environment as possible. 8.0 includes, amongst others:

- Siegfried 1.10.0
- Tomcat 9.0.71
- Bootstrap 3.4.1
- jQuery UI 1.13.2
- Image Magick 7.1.0
- Spring Security 5.3.x
- Siegfried 1.10.0



## Additional

- Support for connection to SFTP with an RSA key and an identity file path of the public key. Customers can now choose between authentication using a password or RSA Key.
- Separate provenance event will be added to the AIP for each format identification tool run, in case of multiple format identifiers.
- Added MD Extractor and Format Validator columns to the FL Formats page
- New "Files Ignored - Format Validation Error" report
- In case submitted ZIP has more files than CSV, allow ignoring error from 'Technical Issues->Deposit'.