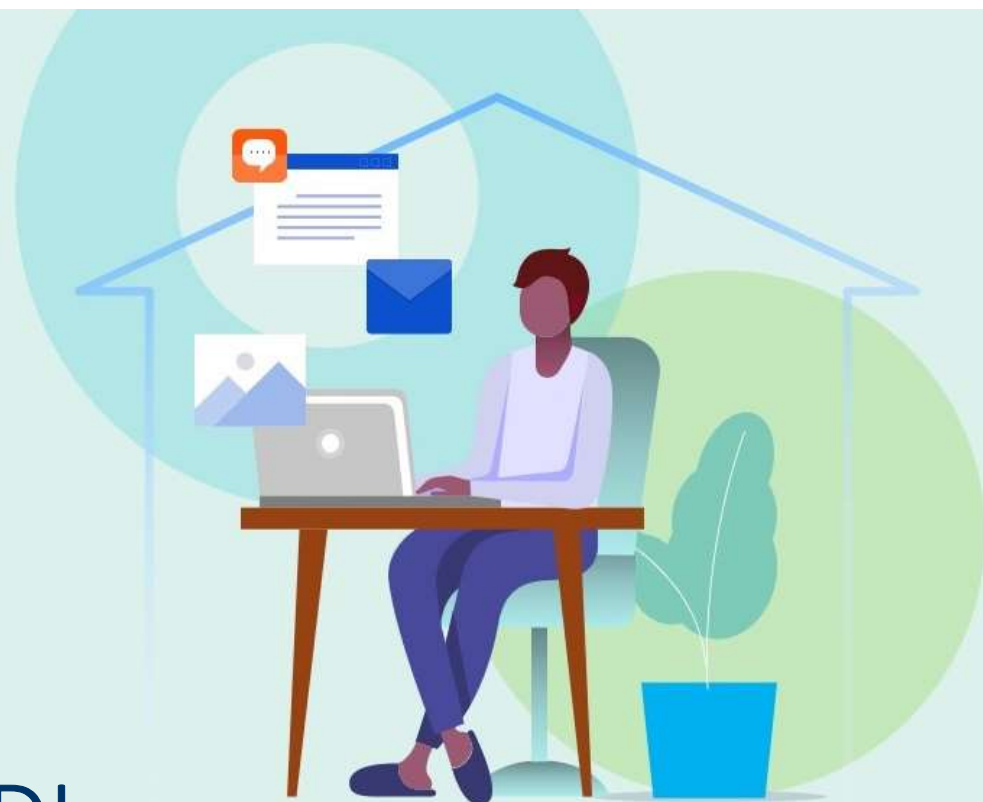


Get to Know How New Collections are Added to the Knowledge Bases and CDI

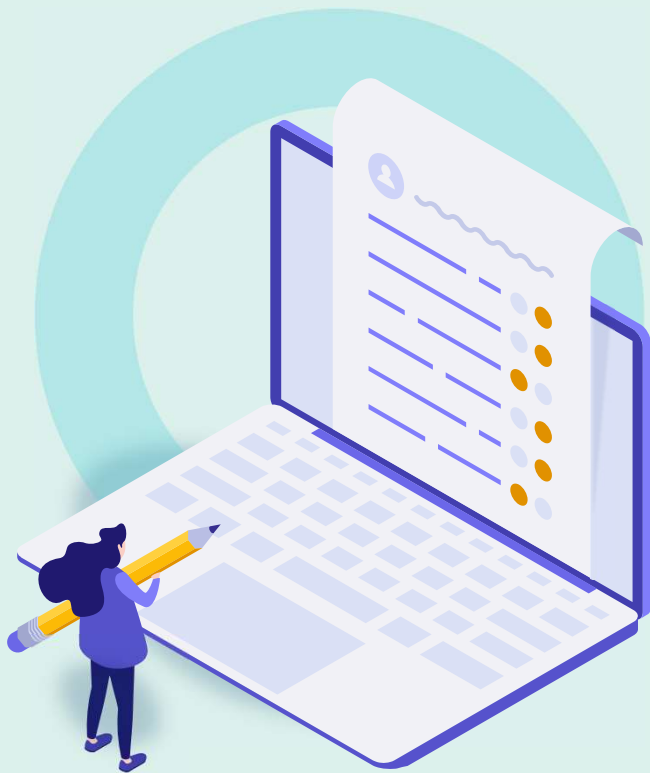


Tamar Ganor | Content Product Manager
June 22nd 2023

© 2023 Ex Libris | Confidential & Proprietary

ExLibris
Part of **Clarivate**

Agenda



- New content in context
- Where does new content come from
- Where does new content go to
- Inside the ingest process
- New workflow for new content



New Content in Context

Meaning of New Content

Quality

Diversity

**Community
and
Industry**

**Technological
opportunities**

What is New Content



New Providers

Establishing relationships with partners



New products

Providers offer new content types and modules



Annual collections

Collections that change slightly every year



Authority vocabularies

Promoting DEI (Diversity, Equity and Inclusion)



Different manifestation for existing content

Enrichment, metadata granularity, platform migration



Local content

Community contributions to CZ, CDI representations

Requests for New Content come from:



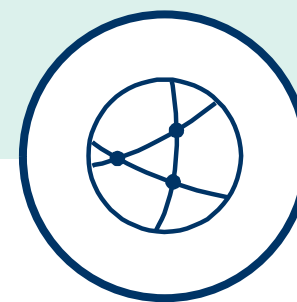
Providers

- Contact form
- Ongoing communications



Community

- Working groups
- Support cases
- NERS
- Idea Exchange



Ex Libris

- Sales
- Professional Services
- Customer success
- Cross-Product
- Support

The New Content Journey

- New content & it's metadata are available
- Provider Relations verify available feeds
- Legal approval*
- Evaluating new content's metadata usability
- Deciding KBs/CDI/both
- Automation*





Where Does The Content Go to

Evaluating Metadata Usability

- Feed delivery format
- Update frequency
- Perpetual or with removals
- Full text or not
- Does it have identifiers
- Metadata granularity



New eBook Collection

- Standard KBART
- Excel format
- With unique identifiers
- Full text available



New Newspapers Collection

- Rich metadata with title and article level details
- XML format
- No identifiers
- Full Text available



File Example	Alma, SFX and 360	Alma + 360 Enrichment	CDI package
KBART only	+		
KBART + MARC file (or only MARC)	+	+(If MARC)	+(Books only)
KBART + MARC + articles metadata	+	+(If MARC)	+
Title list in KBART, JATS XML for articles.	+		+
Excel / XML for content without identifiers			+
XML for articles			+
XML for Title and Article level, no identifiers.			+
Database	Can be presented as ZT DB only		

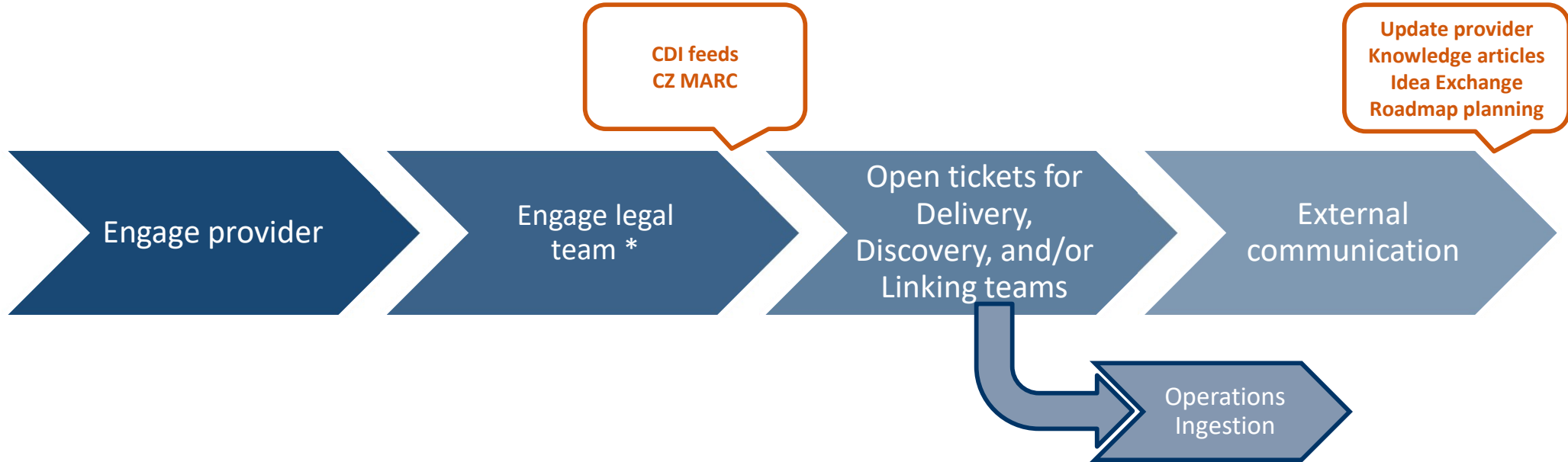


Inside the Ingest Process

Provider Relations Outreach

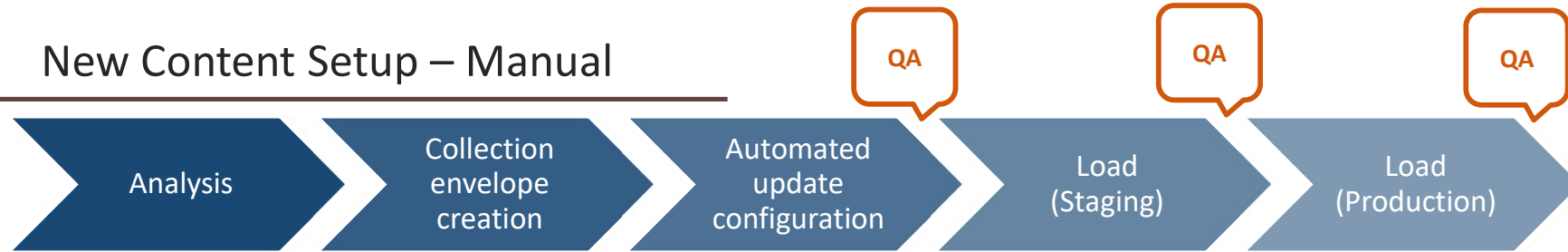
Requires provider responsiveness

New Content

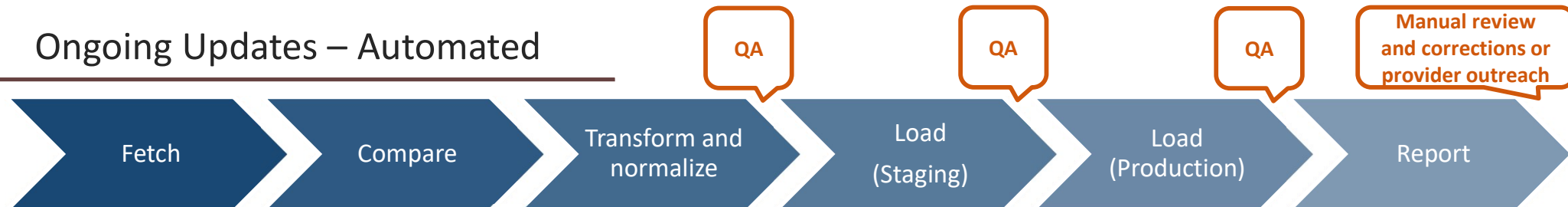


Knowledge Bases (Alma,SFX, 360 KB) Content Ingestion

New Content Setup – Manual



Ongoing Updates – Automated



Skip if title list wasn't changed since last check

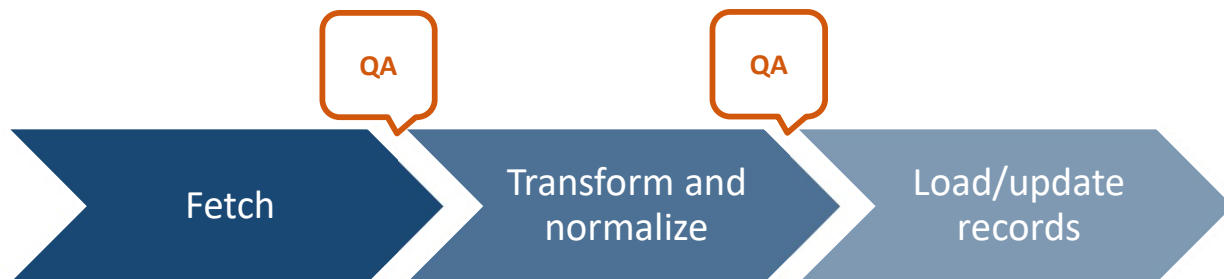


CDI Content Ingestion

New Content Setup – Manual



Ongoing Updates – Automated

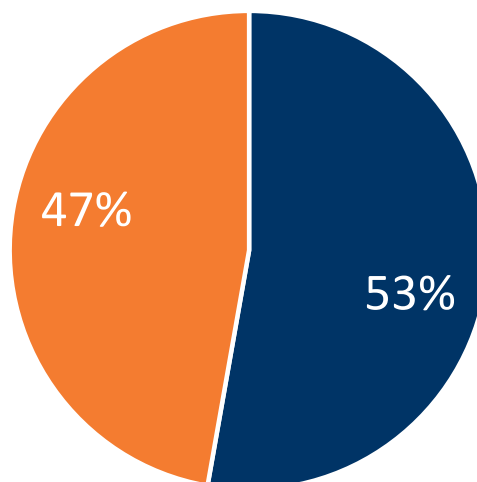


Refreshed twice a week



Community Perception of Usability

What would you prefer as a general rule of conduct with electronic ebook/ejournal collections:



- Activate as soon as possible, regardless of Bib record quality
- Wait for two weeks to get better Bib records before activating



Other Responses:

- Activate as soon as possible but then update as soon as better [Bib] is available
- Activate as soon as possible, but if its textbook we make it as a IZ record
- Do ASAP for ejournals, wait 2 wks for ebooks or other material types
- Activate as soon as possible but update after two weeks
- Activate asap, overlay with better metadata when available
- Activate it ASAP but have a note that the records are going to be updated
- If you can update in 2 weeks, go ahead w/ low quality
- Activate as soon as possible, but I hope the bibliographic description of the collection includes info that it is in the process of being 'built' and perhaps give a time frame
- I think it depends on whether there are bibliographic records available from another source (like WorldShare Collection Manager, the vendor, or a third party cataloger). We wouldn't activate a CZ collection with substandard bibs if we could load higher quality local ones. However, if it's the only way to provide discovery, then we would take the brief bibs over nothing.
- Why only 2 options? Can you request providers to provide at least minimal level records? I have noticed that some records do not have author names, description, subjects, etc. It is very challenging to work with those records.
- Activate asap. Poor CZ bib = automatic search in OCLC and relinking to that OCLC record



Multiple Solutions for a Variety of Metadata



Workflows for New Content

Systematic Approach for New Content

Being Proactive



Automating



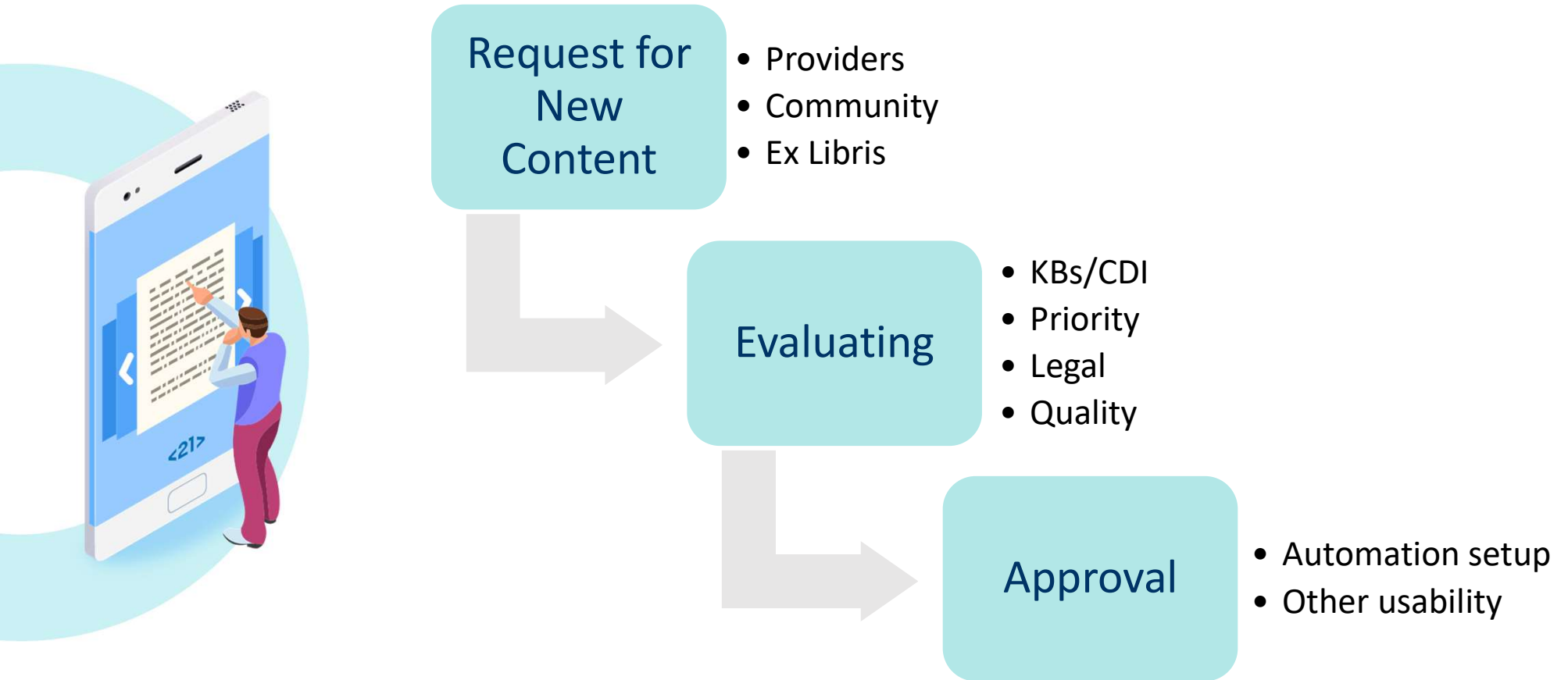
Maximizing Impact



Deciding
KBs/CDI/both

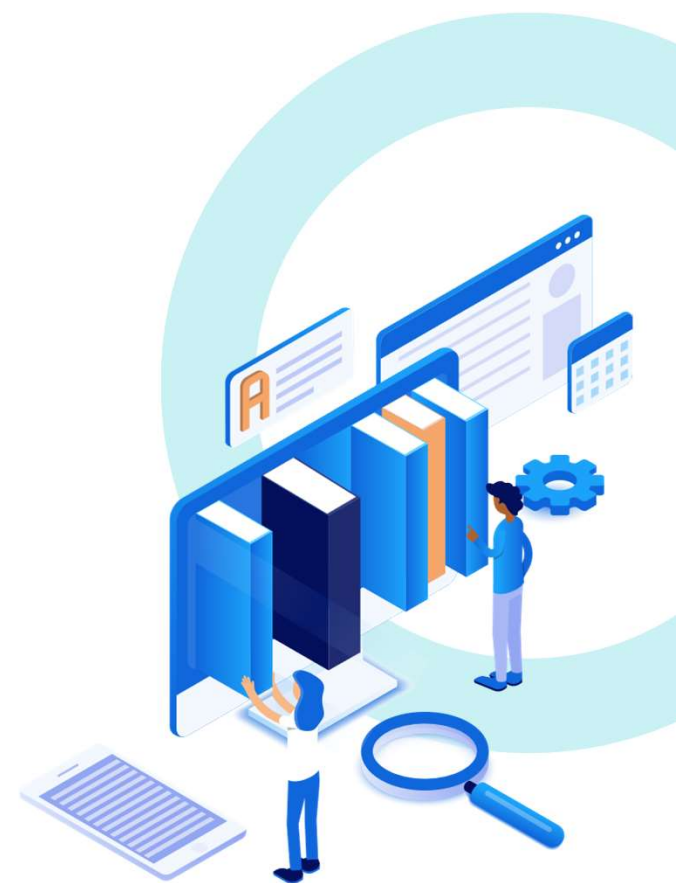
Maintain Quality

Workflow for New Content

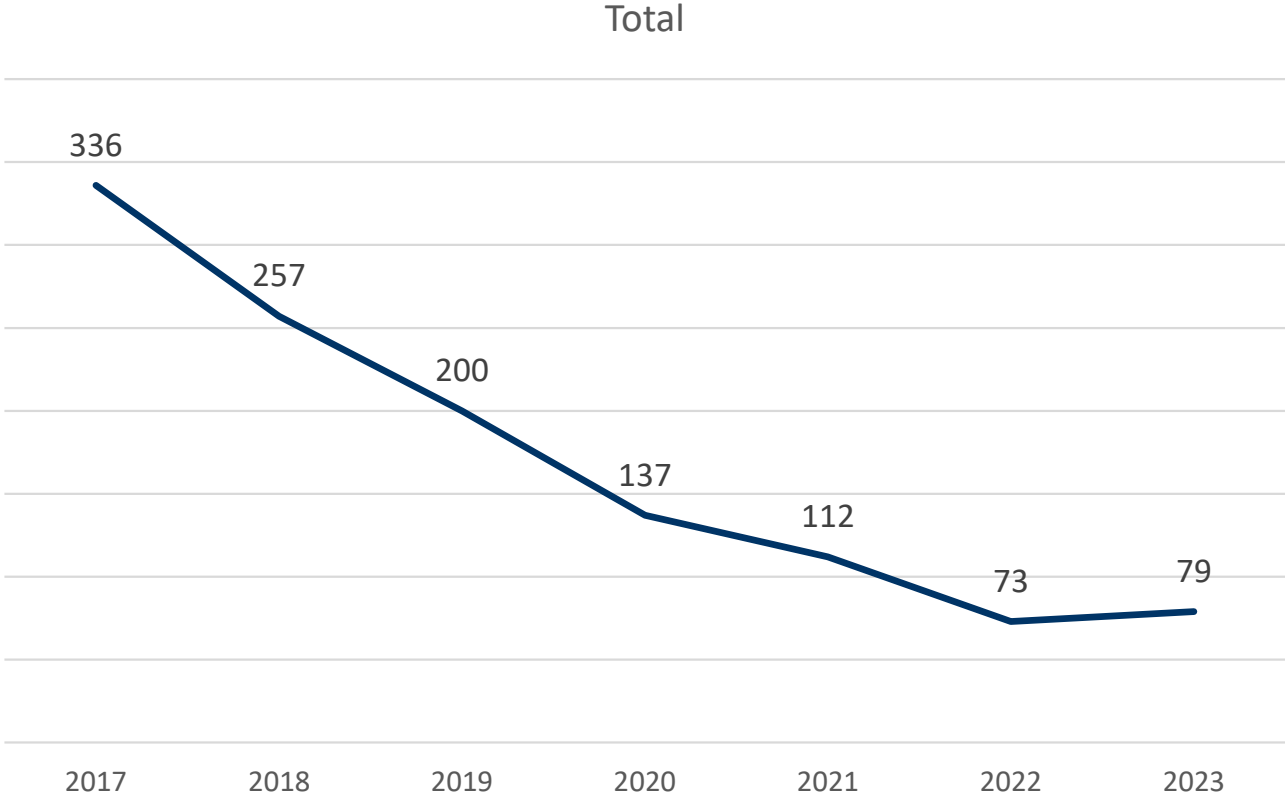


Managing Community Requests for New Content

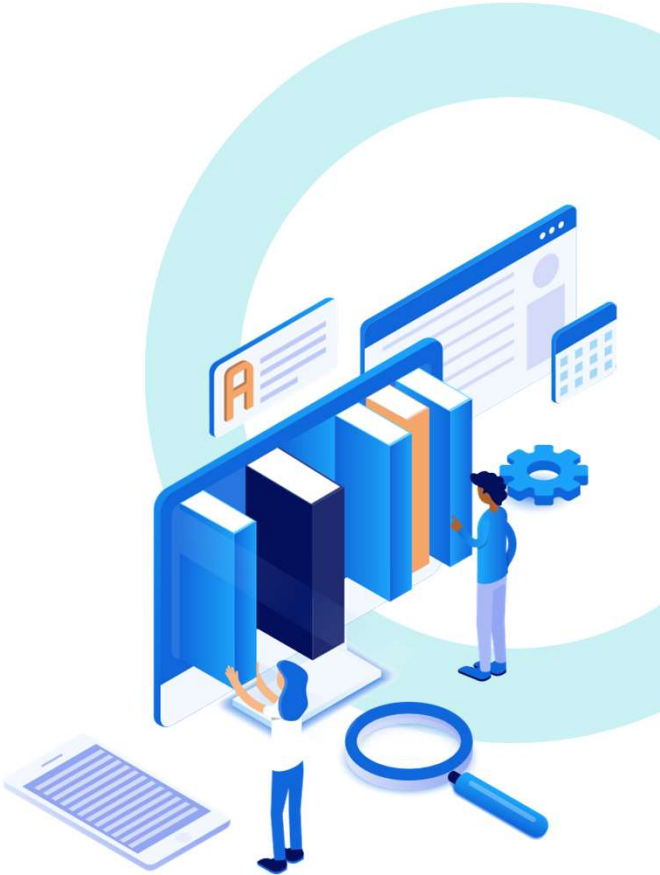
- Advantages of Idea Exchange
 - Transparency – anyone can vote, post and see
 - Prioritize by votes and comments
 - Regional content
 - Archive of requests
- Cases for existing providers – discontinue
- No need to vote on existing providers' content
- Doubled the number of votes for new content to 50
- Prioritize in NERS



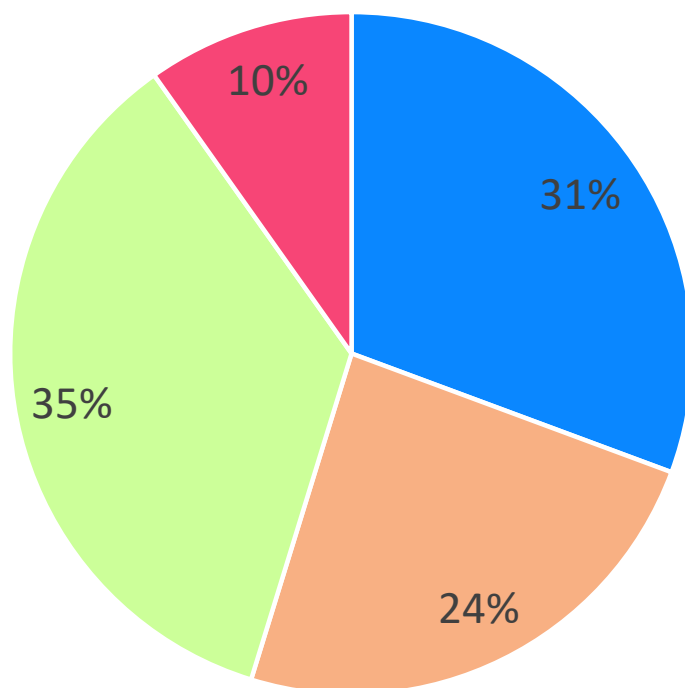
Ideas Posting Over the Years



*As of End of April 2023



Total Ideas Status



■ Already Supported

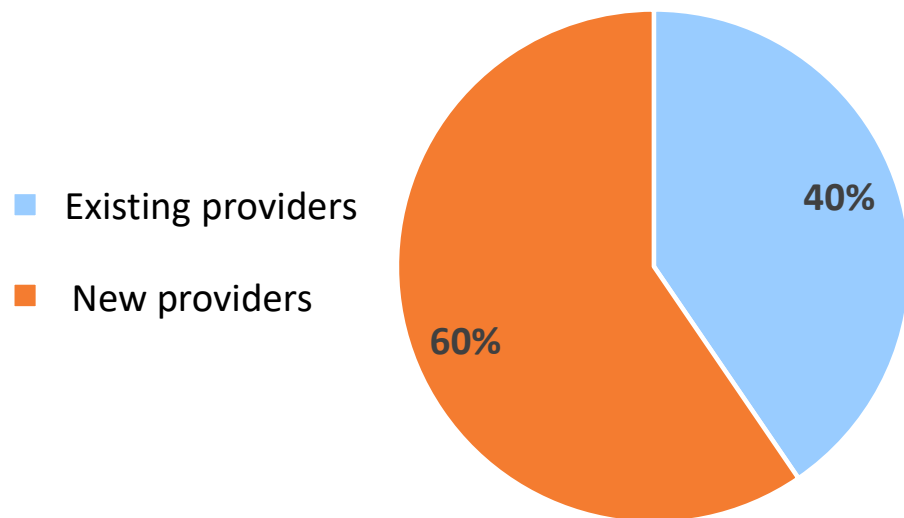
■ Closed

■ Completed

■ Under Review

Idea Exchange Statistics

Provider analysis
Ideas submitted 2017 - 2022



No identifiers

Primary sources

Historical collections no longer sold

New Providers Requests types

- Regional non-English content
- Open Access
- Single titles
- Authority Vocabularies



How to Make a Case For Your Idea

- Check if this idea was already posted, and vote for it
- Where you would like to see the content
- New or existing providers
- Provide any possible detail including:
 - Number of collections from the provider
 - Contact person
 - Link
 - Language for non-English requests



Taking New Content on a New Path

- Using **High Quality** metadata
- Finding the **right place** for best representing the metadata (KBs and/or CDI)
- **Diversify** the KBs and CDI
- **Transparency** in new content requests, priorities and decisions.

Transparently Collaborating to get new content in the right place



A Special Thanks to the Content Working Group Especially Beth Juhl and Cody Hackett

Ex Libris, ProQuest, Innovative & Clarivate at ALA Annual

- Visit with us in booth 1811
- Join our sessions at ALA Annual
 - Breaking barriers, building bridges (June 24 @ 10am)
 - Efficiency Unleashed: Save time and maximize your collection budget (June 24 @ 11:30am)
 - Ex Libris Update: Reimagining library services through innovation (June 24 @ 2:30pm)
 - Designing a user experience to support student success (June 25 @ 11:30am)
- Clarivate Customer Appreciation Cocktails and Conversation (June 25)



ALA Registration Links

- General conference link with all event info:
<https://discover.clarivate.com/clarivate-ala-annual-2023>
- Ex Libris specific update link:
<https://www.eventbrite.com/e/ex-libris-update-reimagining-library-services-through-innovation-tickets-643164060017>
- Cocktail reception:
<https://www.eventbrite.com/e/clarivate-customer-appreciation-cocktails-and-conversation-tickets-652013739647>

Upcoming User Community Events



IGeLU 2023 – Conference
Program Overview – IGeLU



Join the new content mailing list

<https://exlibrisusers.org/postorius/lists/content.exlibrisusers.org/>

Thank you!

tamar.ganor@clarivate.com



ExLibris
Part of **Clarivate**