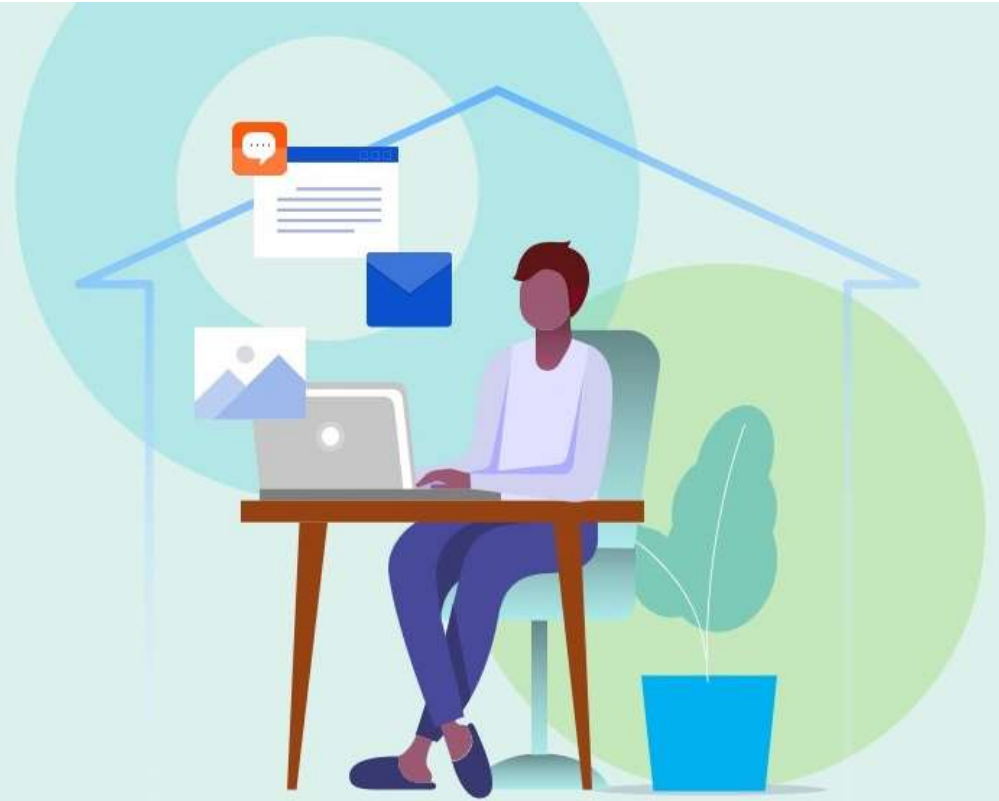


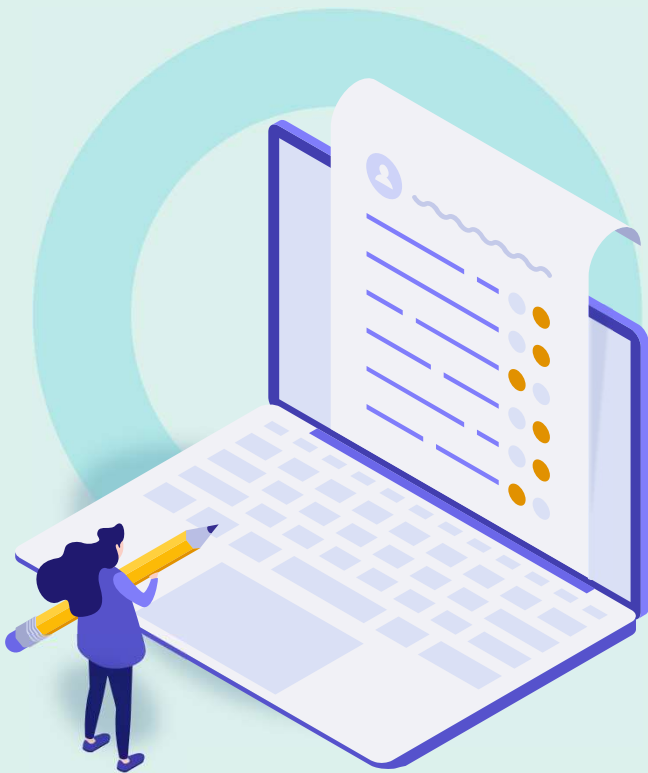
Data Excellence At Your Service

Tamar Ganor | Content Product Manager
March 21st 2023



Agenda

- The content challenge
- Managing metadata
- Data Excellence initiative
- Quality, currency and discoverability
- What's next





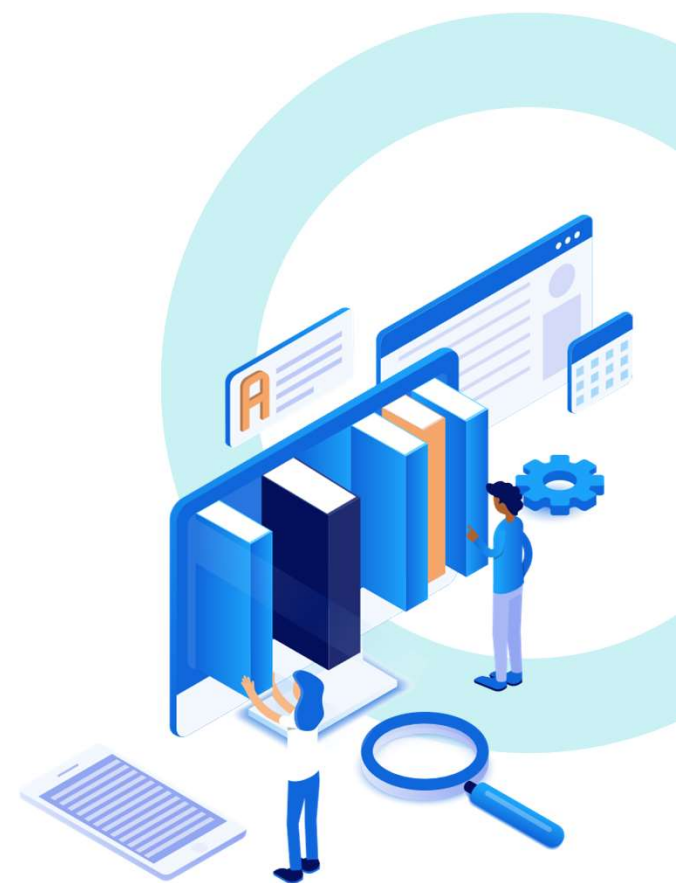
The Content Challenge

or: what makes content so hard to handle

The Content Challenge in the Knowledge Bases

There's just so much content!

- Over 2,600 collections with over 1,000 portfolios
- 103 collections with over 500 activations, total of 441,407 activations
- Over 8,400 collections with fewer than 10 activations
- Over 4,050 interfaces
- Over 150 languages

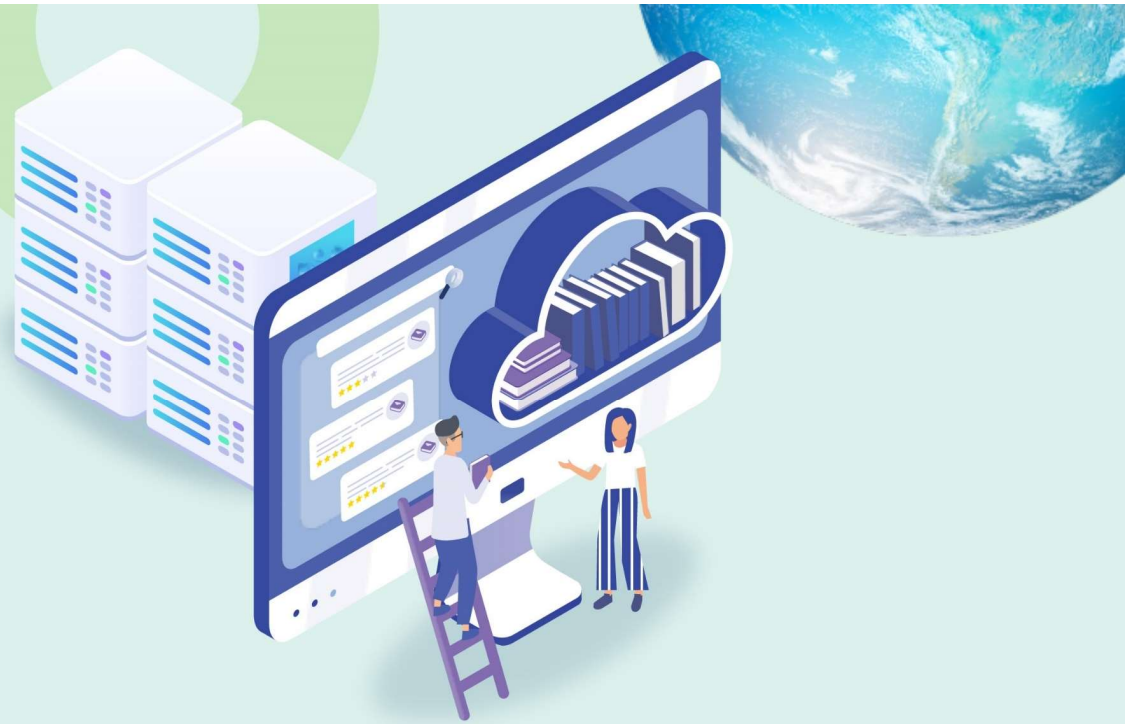


Material Types in CDI:

- 948 million Journal Articles
- 794 million Books / eBooks
- 130 million Patents
- 53 million Conference Proceedings
- 34 million Book Chapters
- 23 million Datasets
- 18 million Video Recordings



Managing Metadata



Managing Metadata Effectively

- Quality
- Currency
- Discoverability

Links

Locations

Volumes

Languages

Material
Types

Editions

Data Excellence – Making the most of metadata



Capacity, Efficiency,
Speed and Provision,
Quality



Quicker Updates

Increase update frequency of Alma



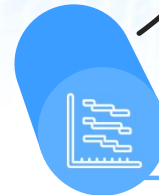
Better Quality

Improve and expand MARC
metadata in Alma CZ



Improved Discoverability

Enhance linking and rights for CDI users



And More...



Quicker Updates

Direct Ingest – Direct Impact

- PZ next generation
- Gradual rollout

SPEED OF UPDATES

Data Excellence at your service:

Move to Direct Ingest

- JSTOR and Cambridge
- Over 400 active collections
- 4 million portfolios
- Active in over 1,440
- From provider to end user within two days



Next to come

- From a three weeks cycle to a daily cycle
- EBC, De Gruyter, Elsevier
 - Almost 9 million portfolios affected
 - Total of ~50,500 activations, for 2,474 collections
 - By end of the year keep moving them by highest impact, planning to move 60-70% of the portfolios to daily updates.



Other Implications

- Automation
- Improve ingestion processes
- Clean up collections
- Better interface management
- Removing redundant duplications



Proactively Monitoring Collections' Currency

- Enhanced proactive reports for analyzing collections automation:
 - One report to monitor collections
 - Process checkpoints
 - Date of latest update
- Cases analysis





Better Quality

Upgrading Record Metadata in Alma CZ

How to improve quality

- Downstream
- Improve at the origin

Data Excellence at your service:

- Enrichment of highly activated ebook collections (see next slide)
- Reach out to providers
- Utilizing alternative sources – LoC print records

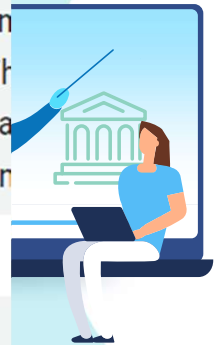


Quality score average	Before	After
Brief level	3.76	8.04

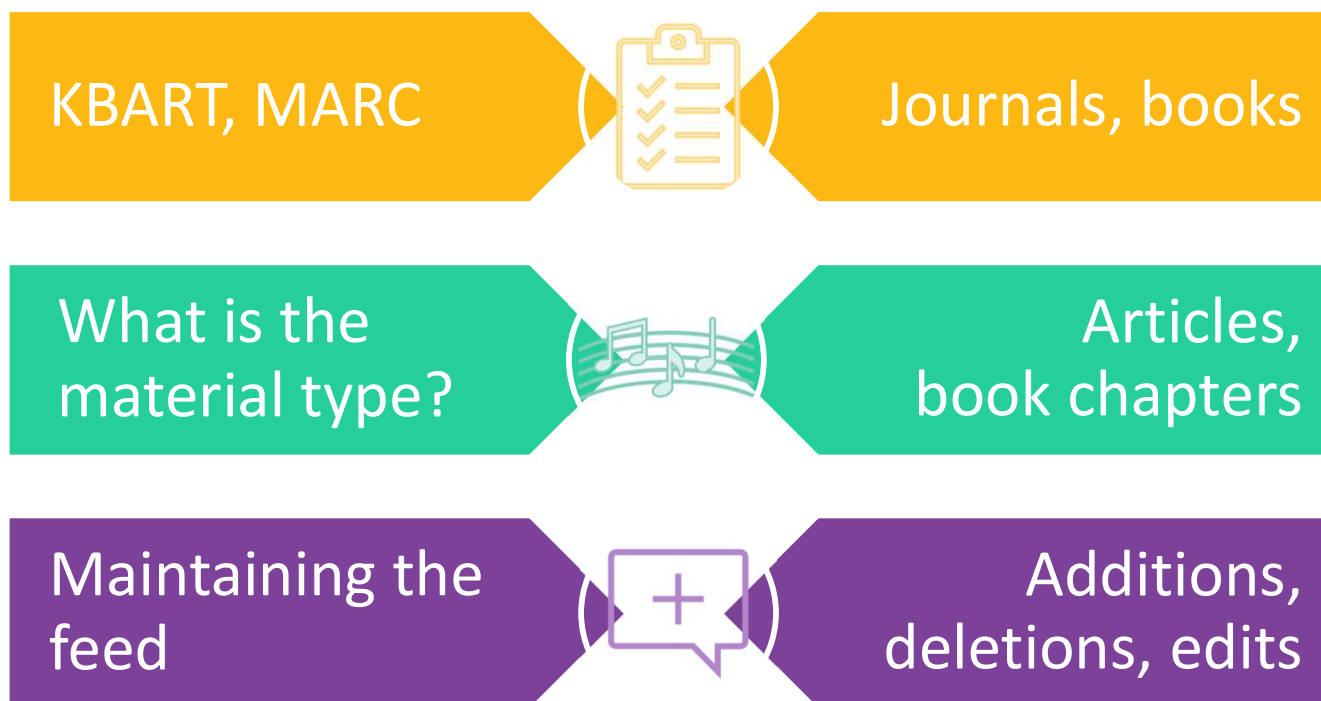
Enriching eBook Collections

- How to make an impact
 - Ebook Central
 - Elsevier ScienceDirect Books
 - Walter De Gruyter Books
 - Knovel Books
 - DOAB and Oapen
 - NCBI Bookshelf
 - InTech Books Free

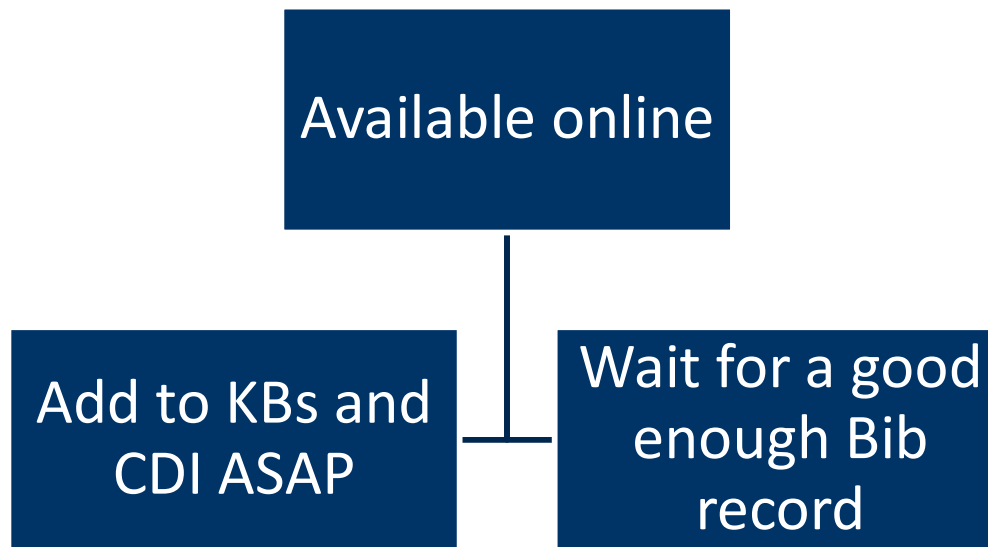
	comprehensive, contextually relevant way. IS religion focuses on these issues. But these are the wrong qu politics, this book emphasises that religion is not so that help us to make sense of this ever-changing phe studies of three core areas of IR analysis: (1) conflic cases highlight how assumptions about what religio done through policies and programmes based on un religion into research, policymaking, and practice. Th diplomats, civil servants, policymakers, journalists, a religion, as well as scholars of religion from disciplin
520	
500	__ a Includes index.
650	_0 a Conflict management x Religious aspects.
776	__ z 0-367-47866-8
776	__ z 1-000-81699-0
906	__ a BOOK



Provider Feeds

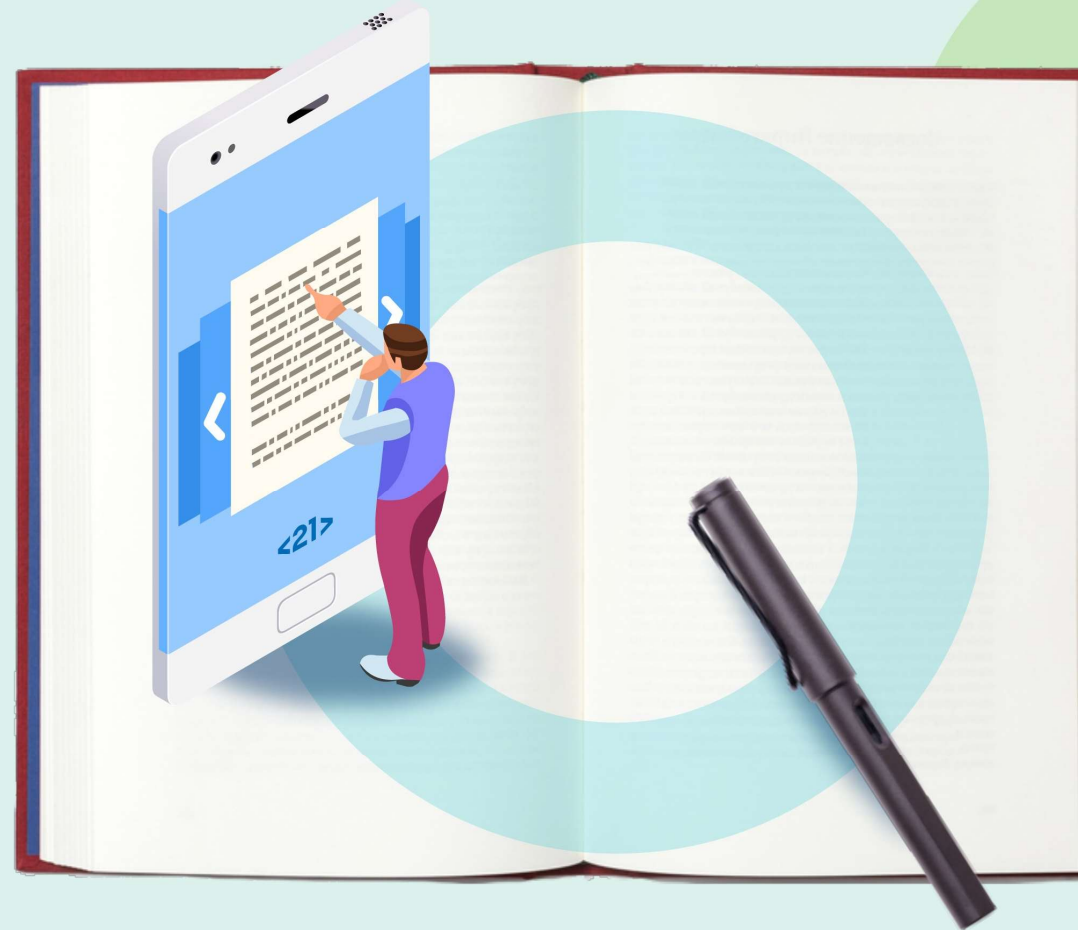


What Would You Prefer:





Improved Discoverability



Discoverability Through Linking

- Linking improvement
- Fewer clicks to get full text

Data Excellence at your service:

- Unique identifiers for improved linking
- Quicklinks – 33 providers
[https://knowledge.exlibrisgroup.com/Primo/Product_Documentation/020Primo_VE/Primo_VE_\(English\)/030Primo_VE_User_Interface/Quicklinks_Provider_List](https://knowledge.exlibrisgroup.com/Primo/Product_Documentation/020Primo_VE/Primo_VE_(English)/030Primo_VE_User_Interface/Quicklinks_Provider_List)
- Set links order
- Keep linking flexible
- More on linking:
https://knowledge.exlibrisgroup.com/Primo/Training/Webinars/All_Webinars



Discoverability – rights processing time reduction

- Activating the resource in Alma
- Processing the newly given rights
- Displayed in CDI
- Used to be 100+ hours
- Aim to reduce to 24-30 hours



Discoverability – More

Other actions to improve discoverability:

- Normalize subject headings
- Identify authors with ORCID
- Adding secondary resource types
- Improve language consistency and publication dates

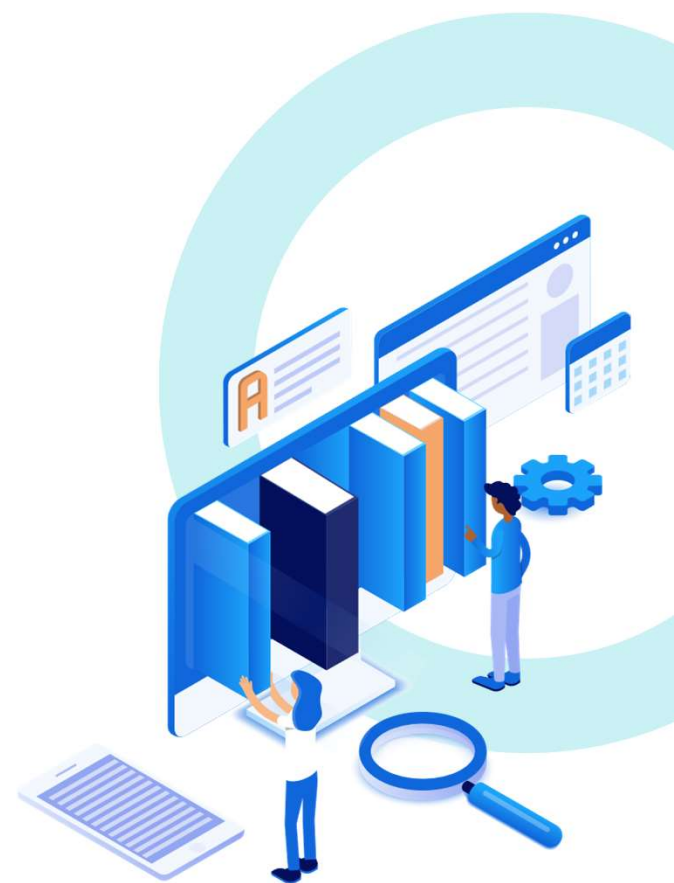


What's next?



Next for Content and Data Excellence

- Improve quality, discoverability and currency
- Operational efficiency for better updates
- Customer experience with content support
- Communication & collaboration with customers and providers



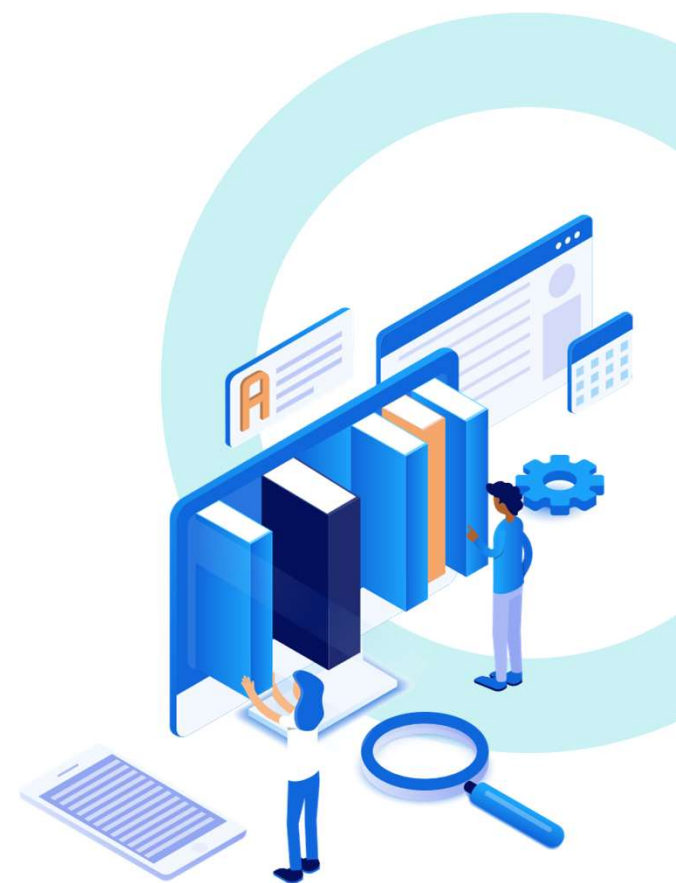


Join the new content mailing list

<https://exlibrisusers.org/postorius/lists/content.exlibrisusers.org/>

Data Excellence At Your Service

- Ongoing
- Prioritizing
- Cross products
- Survey results....



Upcoming Webinars and Activities

- **Webinars**

- **Diversity and Inclusion by design – how technology can ensure a better world: A talk with Orly Lobel** on April 27 at 11:00 am EDT (New York) - [Register](#)

- **User Group events**

- **ELUNA 2023:** May 8 – 12 in Los Angeles, California - [Info](#)
- **IGeLU 2023:** September 11 – 14 in Leuven, Belgium – [Info](#)



Thank you!

tamar.ganor@clarivate.com



ExLibris
Part of **Clarivate**



Supporting diversity, equity and inclusion

Thesaurus and controlled vocabularies

- What is the use
- How many we have
- What is the daily use
- Advantages



Other ways to support DEI

296 million Open Access Records



What makes data excellent

- Up to date
 - Increase update frequency
- Better Quality
 - Improve and expand MARC metadata
- Improve discoverability
 - Enhance linking and rights

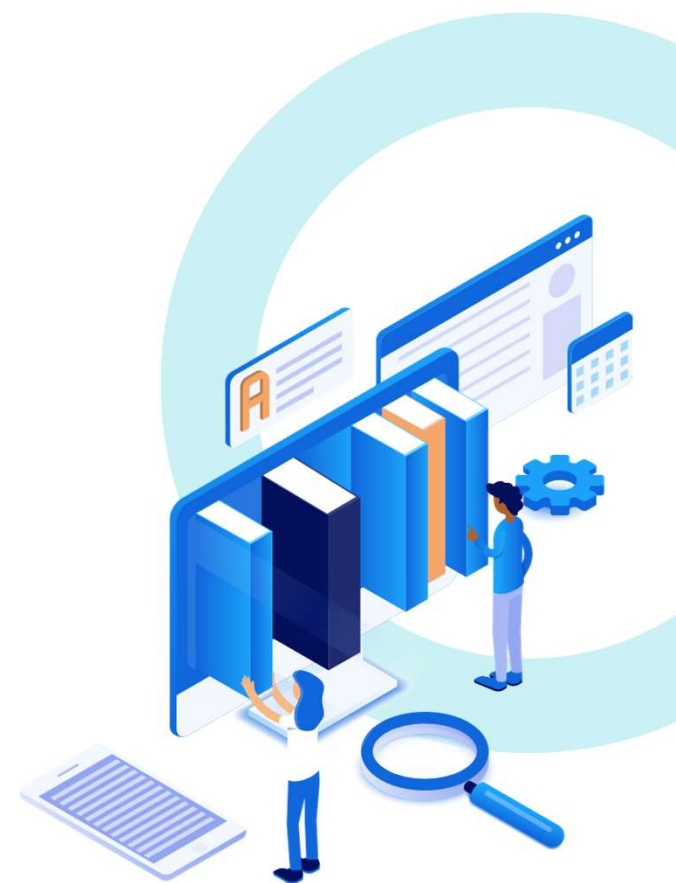


**Putting the
excellence
in data**

Lemonade without Lemons

- No identifiers
- No material type
- No subjects
- No authors

No problem!

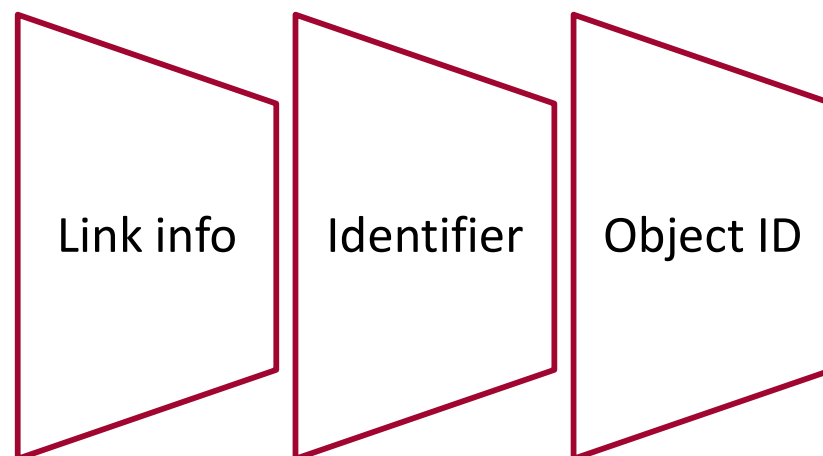


The Importance of Standardized Metadata

- Linking
- Enrichment
- What would you expect:
 - One bibliographic record – many links
 - One bibliographic record – many locations
 - One bibliographic record – many volumes
 - One bibliographic record – many material types

But...

- One record for every edition
- One record for every language



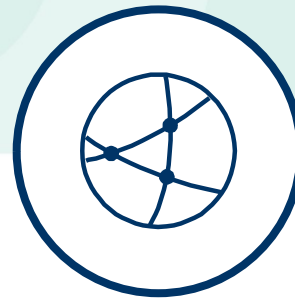
Standardized metadata gets you where you need to be



Discoverability



Current



Linking



Cross product

Desired outcome of the session

- Getting acquainted with DX terminology
- Learning about the tracks and what are the improvements over time
- What to expect, why should they be excited about what's next

Story of growth Alma CZ + Index

- Collections
- Portfolios
- Bib records
- Activations
- Publishers
- Variety (types, languages)
- Contributed collections
- Niche content

Growth originated Challenges

- Non-standardized content
- Staying updated
- New content
- New providers
- Unowned content
- Enriching
- Cross product flows
- Growing dependencies on 3rd party stakeholders

How to keep up (content and product)

- Systems support the increasing capacity and reducing processing time
- Raise awareness of anything new
- Keeping customers & publishers up to date – transparency
- Increase collaboration with customers & publishers

What we do to achieve better content (added value)

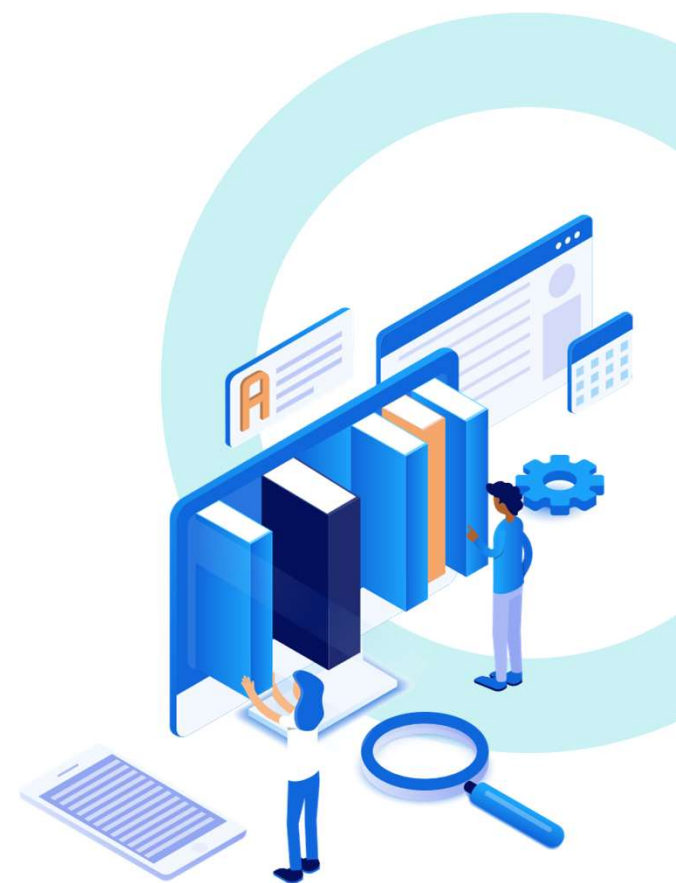
- DX tracks 1-2-3

Benefits of Centralized KBs and Index

- Reduces cataloging effort – using existing MARC records
- Easy activations – one click gets you everything
- Low maintenance – we will take care of the updates
- Linking – getting you to FT with just one click
- Peer Review – your patrons know what they can use
- Supporting DEI with authority vocabularies and increase open access content
- Standardizing chaos – one bib strategy

Agenda

- The Content Mountain - Story of growth
- Growth originated challenges
- How to keep up
- Climbing the metadata mountain - Data Excellence + looking forward (2022-2024)
- Benefits of Centralized KBs and Index



Link in records vs. link resolver

