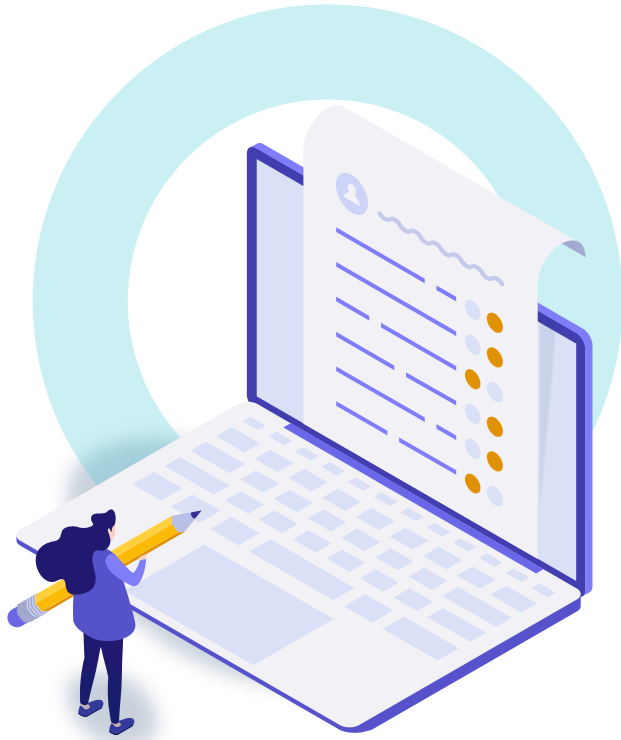




Data Excellence

Rael Elstein | Content Product Manager

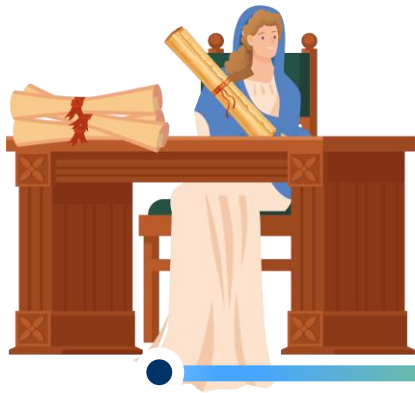


Agenda

- Starting at the Beginning
- Data Excellence (DX)
- Data Excellence Activities

In the
beginning...





20



1520



1920



2022

Today...



Greater Variety
of Content

Increased
Volume of
Content

Expansion of
Informative
Metadata

Improved
Access
to Content

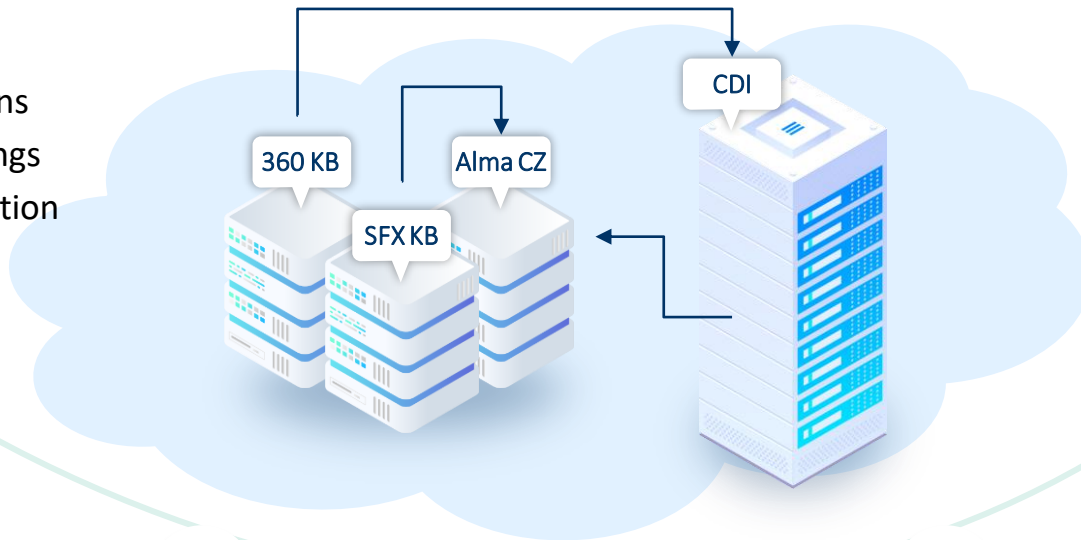


Demand for
Higher Quality
Metadata

Content and Data Across Our Services

KBs/CZ

- > 58,000 collections
- > 70 million holdings
- 15% annual collection growth



Central Discovery Index

- Articles, books, chapters, video, datasets, more...
- 4.7 billion records
- 10% annual record growth


Resource Management
Alma


Discovery
Primo/Primo VE
Summon


Research Workflows
Esploro


Linking
SFX
360

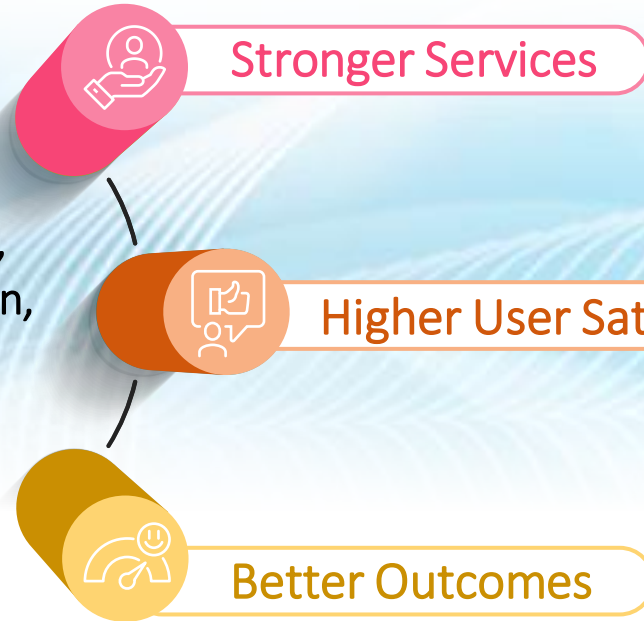

Resource Sharing
Rapido

Data Excellence (DX)

Addressing the intersection between **Content**, **Technology** and **Users** as part of a data-driven cross-company strategy



Capacity, Efficiency,
Speed and Provision,
Quality



Data Excellence Looking Forward



Capacity, Efficiency,
Speed and Provision,
Quality



Quicker Updates

Increase update frequency of Alma



Better Quality

Improve and expand MARC
metadata in Alma CZ



Improved Discoverability

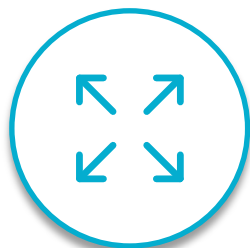
Enhance linking and rights for CDI users



And More...

Long-term Content and Data focus

Reducing Update Turnaround Time in Alma CZ



Capacity



Speed



Ingestion



Cadence

Reducing Update Turnaround Time in Alma CZ



Quicker Updates

Direct updates into
Alma CZ within 2 day of
file availability

Content available in
**Discovery on semi-
weekly** basis

Next phase of Provider
Zone program

Gradual rollout to ensure
smooth transition and
avoid disruption

Transparent process; no
action required from
libraries or providers



Reducing Update Turnaround Time in Alma CZ



Quicker Updates

- Pilot: **Cambridge University Press** – July 2022
- Over **200 collections** already transitioned (CUP)
- Prioritizing Provider Zone providers
- **2022**: gradual expansion to additional major providers
- **2023** and onwards: continued transition of providers and content



Upgrading Record Metadata in Alma CZ



Extend Sources

Increase access to traditional sources to enrich records



Improve Measurement

Review and improve Brief Level quality measurement

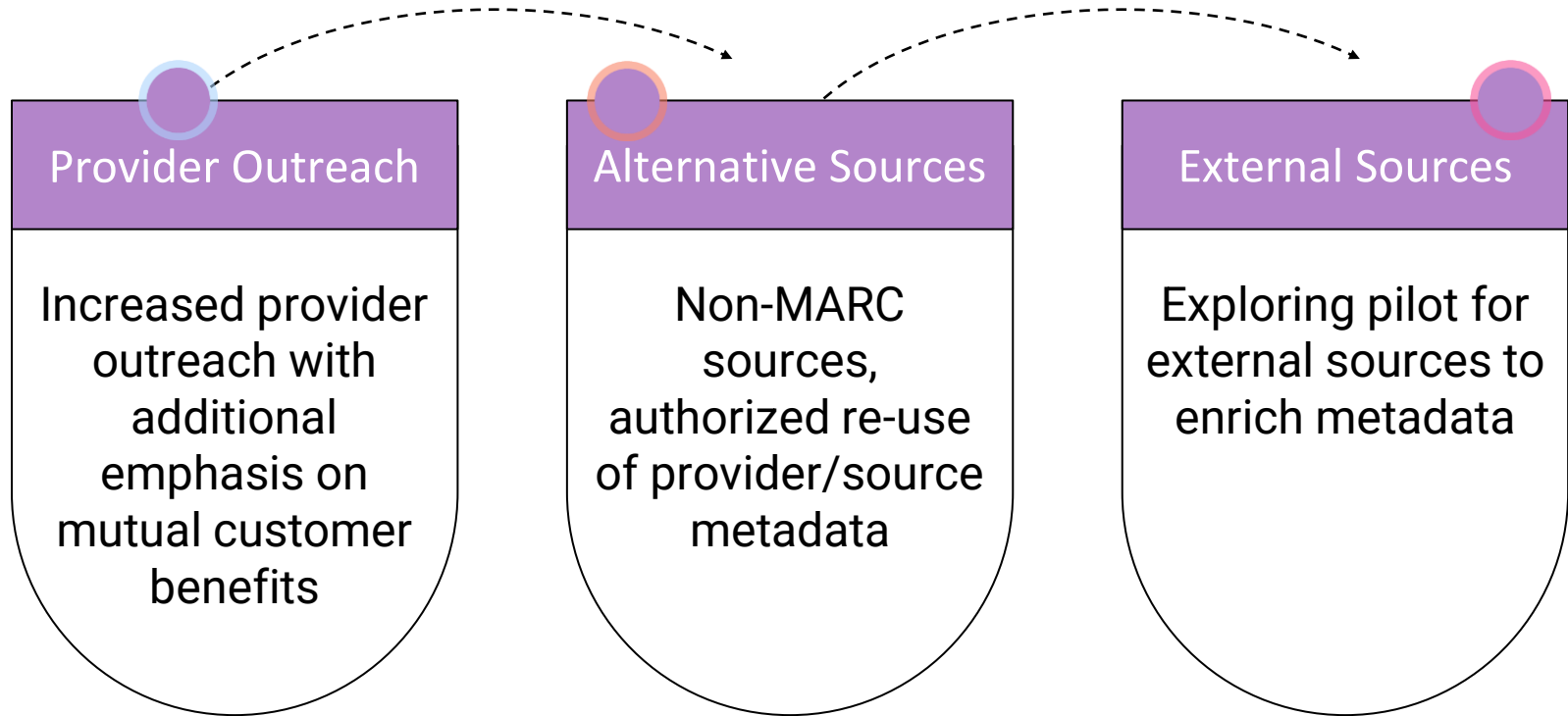


Expand Strategy

Out of the box thinking and creative ideas



Upgrading Record Metadata in Alma CZ



Enrichment Examples and Plans



Better Quality

Provider Outreach

- OECD iLibrary Working Papers Free
99% records LOW quality → 92% records HIGH quality
- Karger eBooks Collection
84% records LOW quality → 89% records HIGH quality

Alternative Sources

- Project Gutenberg Online Catalog
Only 5% records HIGH quality → 45% records HIGH quality
- Library of Congress Print records metadata for electronic records
Enriched up to 1 million records!
- **Under review:** pre-load MARC metadata when available (for select sources)

Enhancing Linking and Rights in CDI



Improved Discoverability



Enhancing Linking



Improved Discoverability


- Expanding **hybrid linking**
 - Over 100 collections converted to hybrid
 - Over 250 collections changes to Link in Record
 - Over 1 billion records
 - New collections released hybrid, where appropriate



Enhancing Linking



Improved Discoverability

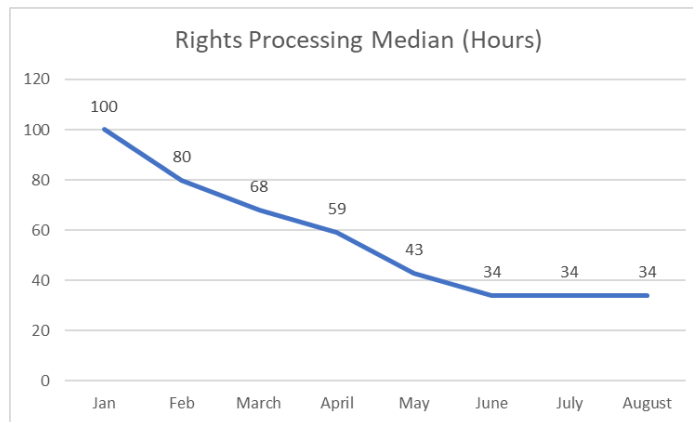
- Supporting  **Quicklinks**
 - Quicker access and fewer clicks with direct linking to HTML/PDF pages
 - **18** providers already supported, with over 10,000 collections
 - Additional providers planned throughout 2022 and 2023
- Expanded **provider ID-driven article-level linking** for more accurate linking for over 20 providers
 - Gale, OUP, SAGE, PQ, JSTOR, and more





Enhancing Rights in CDI

- Major **rights processing** improvements
 - Goal to reduce processing time to 24-48 hours
 - Decreased turnaround from 48-72 hours to below 35 hours
 - Additional improvements in progress throughout 2022



Long-Term Content and Data Focus



And More...

- More transparency and communication on our ongoing projects
 - Informative updates, training and webinars
- Increased engagement with the community
 - Collaboration with product and content working groups
 - CDI Advisory Group – discussions about Open Access and Peer Reviewed content

Collection Management Level



And More...



Long-Term Content and Data Focus



And More...

- Ongoing and future activity
 - PQ Ebook Central release of book chapters in CDI – October/November 2022!
 - Greater transparency and clarity on collection status (Collection Management Level, added functionality)
 - Pre-loading MARC metadata to Alma CZ for day-one quality
 - Expansion of link checker functionality
 - Enhancement of CDI linking methods for easier configuration
 - Improvements around CDI merged records
 - Review of CDI usage reports
 - ... and more to come!

Data Excellence (DX)



Capacity, Efficiency,
Speed and Provision,
Quality



Strongest Services



Highest User Satisfaction



Best Outcomes

Thank you!

rael.elstein@clarivate.com

