

# Unveiling the New Ex Libris Provider Platform

A Webinar for Content Providers

Noam Fass | April 16<sup>th</sup> 2024

# Agenda

## Alma overview

How our joined customers are managing their libraries

## Provider Platform

All you need to know about the new Platform and how you can gain credentials to see your content the way that Alma customers sees it

## Q&A

## Know the Provider Relations team

- Who are we?
- what is our mission?
- Get to Know Our Knowledgebases

## Additional Activities

- AI enrichment - Need Development Partners!
- New Collection creation - Need Development Partners!
- ELUNA round table
- Next Webinar

## Q&A



## Find a recording here

[https://knowledge.exlibrisgroup.com/Content/Webinars%2C Idea Exchange and Newsletters/Webinars](https://knowledge.exlibrisgroup.com/Content/Webinars%2C_Idea_Exchange_and_Newsletters/Webinars)



# Before we begin... Bottom line!

**Email me** in case you would like to gain access to the Provider Platform in order  
**to see how your content looks like in Alma Community Zone**

[noam.fass@clarivate.com](mailto:noam.fass@clarivate.com)



# **Alma overview - Live Demo**

How our joined customers are managing their libraries

# Alma



Electronic collection ▾

Electronic Collection Name ▾



Main Library - Main  
Circulation Desk ▾



Welcome, Thomas Safransky | 04/15/2024

## Alma Persistent Search



Recent Pages



Manage Collec...  
Resource Managemen



Configure Views  
Discovery



Run a Job  
Administration



Monitor Jobs  
Administration

Discovery Search ▾

Search anything...



## Alma Menu



Alma  
Production



Market



Acquisitions



Fulfillment



Show MDE



Configuration

# Alma

The screenshot displays the Alma user interface. At the top, a blue navigation bar contains the ExLibris Alma University logo, a search bar with the text "Electronic collection" and "Electronic Collection Name", a home icon, a search icon, a shopping cart icon with "59" items, and the text "Main Library - Main Circulation Desk". Below the navigation bar, a welcome message reads "Welcome, Thomas Safransky | 04/15/2024". A horizontal menu below the welcome message includes "Recent Pages", "Manage Collec... Resource Managemen", "Configure Views Discovery", "Run a Job Administration", and "Monitor Jobs Administration". On the left, a dark sidebar lists navigation options: "Alma Production", "Market", "Acquisitions", "Fulfillment", "Show MDE", and "Configuration". A "Discovery Search" box is visible with a search input field containing "Search anything...". A dropdown menu is open over the search bar, titled "Choose search scope", with three options: "Institution", "Network", and "Community".

Electronic collection Electronic Collection Name

Welcome, Thomas Safransky | 04/15/2024

Recent Pages Manage Collec... Resource Managemen Configure Views Discovery Run a Job Administration Monitor Jobs Administration

Discovery Search

Search anything...

Choose search scope:

- Institution
- Network
- Community

My Institution's holdings

Alma's Community Zone (Knowledgebase with content from multiple providers)

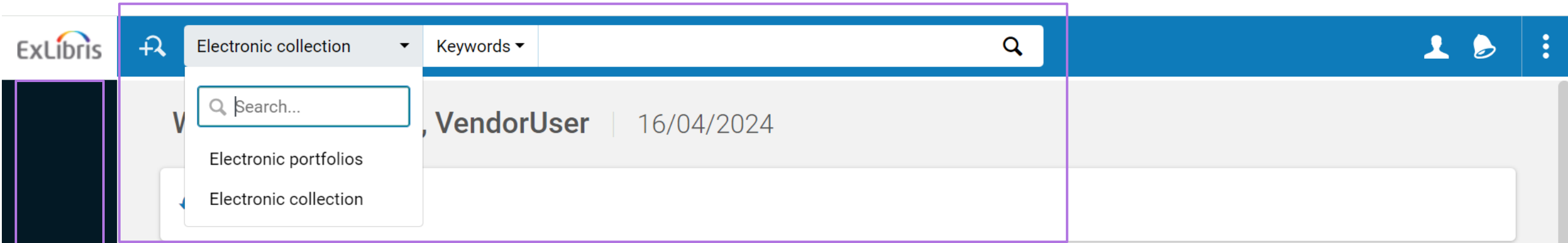


# Provider Platform - Live Demo

All you need to know about the new Platform



# Provider Platform



## Provider Platform Persistent Search

No Menu Items

# Provider Platform



Electronic collection ▾

Keywords ▾

&&



## Facets



### Type



Aggregator package (129)

Selective package (1)

### Interface



Ebook Central (130)

### Electronic Collection

#### Content Type



Book (130)

#### Available for CDI search activation



No

Yes

Electronic Collections (1 - 20 of 130 )

&&

🏠 Institution

Sort by : Rank ▾

## Collection Name

1 🏠 Ebook Central Perpetual, DDA and Subscription Titles

Type: Selective package

Services: Full Text

Interface name: Ebook Central

Linking Level: Book

Creation Date: -

Modification Date: -

Available for CDI search activation ⓘ

Provider coverage: Yes

Search Rights in CDI: Free

Full Text Rights in CDI: Subscription (Title Level)

Full Text Linking in CDI: Linkresolver

CDI Type: Full Text Collection

Do not show as Full Text available in CDI even if active in Alma: No

CDI ID: < 1 of 7 >

CDI Last Market Update:

Collection ID:

6143300000000000002

MMS ID:

995521883500041

🔧 Management level in Community Zone: Ex Libris

## Title Count

Portfolio List (2763509)

Descriptive Record



Only the Provider's content

How does Ex Libris strengths our bridge with Providers?

# Provider Platform | What We Hear From Providers



Gale

Magaly Bascones

“At Gale, we have welcomed the ExLibris initiative to provide a content provider zone in Alma. **We believe that this development will be a game changer**, as it contributes to bring transparency into the Discovery integration... **This will contribute positively to address current metadata issues.** In addition, it will favour a smoother data integration because it will be easier to understand points of failure and success of the existing metadata provisions.”



Adam Matthew

Jennifer Wedge

The provider platform has proven to be an incredibly useful tool... helping both with our content alignment work and when responding to customer inquiries. Being able to see how our content appears in the Community Zone has made handling **customer queries more efficient and reduced the number of steps it takes to get to a resolution.** I have been able to show colleagues my view of the Provider Platform which has given them insight into how customers interact with our content within Alma.



BLOOMSBURY

Bloomsbury

Patricia Veale

We find the Provider Platform invaluable and cannot imagine working without it now. The ability to access the Provider Platform **and view our content as the customer sees it has not only sped up our process but has also allowed us to better understand our customers' queries and in turn provide a more accurate and timely response.**



Oxford Uni Press

Julia Mielish

OUP really appreciates having access to the Alma content provider platform.... The platform is a significant improvement in that **I can screenshot collections to share with customers when they are struggling to activate OUP content.** ..I can use the portfolio lists to view the issue from the customer perspective, which **helps both ExLibris and OUP collaborate and improve the customer experience.** I wish our other discovery partners could offer the same type of access.



De Gruyter

Whitney Jordan  
Rafael Knabben  
AnaMaria Ion-Kary

The Provider Platform is an excellent solution to help us ensure the collections we make available to libraries are available and accurate. **This helps us better see what libraries and librarians are referencing when they email us with questions and allows us to better work with Ex Libris to resolve these problems in a timely manner.**

# Relevant documentation links

[Community Zone](#)

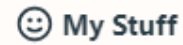
[Central Discovery Index \(CDI\)](#)

[Primo](#)

[Provider Platform](#)

[Want more? Feel free to explore](#)

# Ex Libris | Provider - Advisory Group



Additional

## ExLibris-Provider Advisory Group

This is a space for providers and ExLibris to work together, share ideas, and improve the quality and accuracy of customer content, ultimately supporting libraries and their users.

Set up people



### Message Board

- KJ** View list of subscribers to each collection
- WJ** Overlap Analysis tool  
Hello, We often get reports from
- AI** Renaming existing collections in the CZ **1**
- JM** Understanding collection updates in Alma **8**

### To-dos



Organize work across teams to get things done on time. Assign tasks, set due dates, and discuss.

### Docs & Files



A centralized place to organize and share docs, spreadsheets, images, and other files.



# Questions?

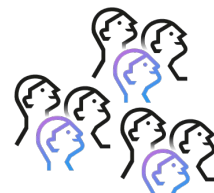
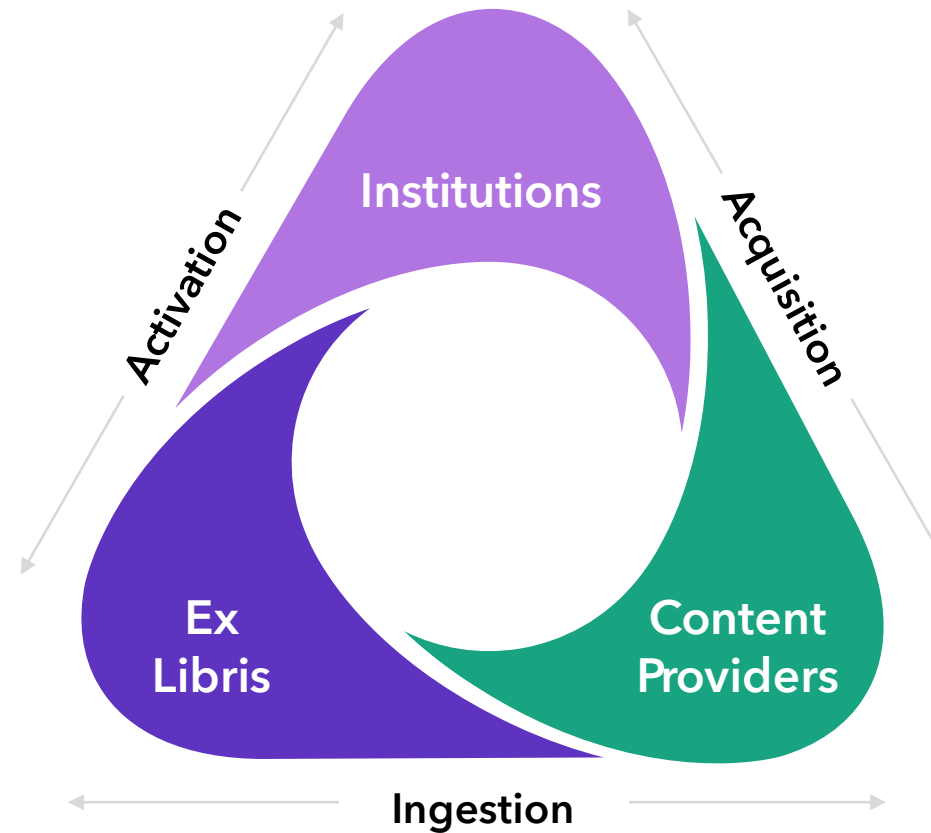
**Email me** [noam.fass@clarivate.com](mailto:noam.fass@clarivate.com) in case you would like to gain access to the Provider Platform in order **to see how your content looks like in Alma Community Zone**



# Know the Provider Relations team

Who are we? | what is our mission?

# Meet The Provider Relations Team



Provider Relations (PR) team

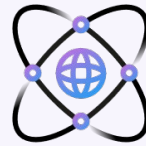


# Meet The Provider Relations Team



Provider

10 PR analyst



5000 global content providers  
Across Alma / SFX / 360 / CDI



40,000+  
Collections



15,000,000+  
Bib Records



The responsibility of the provider relations team is to communicate with content providers and make sure Ex Libris Knowledgebases are with Currency, Accuracy, and Quality

# Get to Know Our Knowledgebases

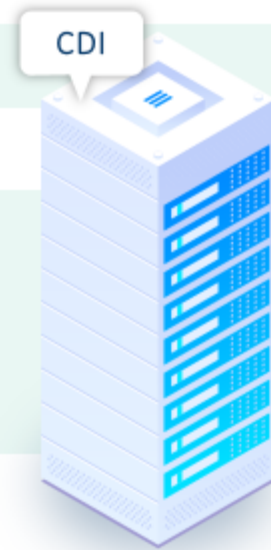
## Delivery - 3 Knowledgebases



~35,000 collection in each KB  
~15% annual growth

- Collection and title level metadata
- Electronic Resource Management tool
- Link Resolver
- Providers supply KBART, MARC\*

## Discovery - 1 Index



5 billion records  
~10% annual growth

- Article level metadata
- Includes rich records: authors, subjects, abstracts
- Optimized for keyword search (Discovery)
- Providers supply XML, MARC\*



# Additional Activities

What are we working on?

# Additional Activities

## AI enrichment

If you have Full Text PDF which you can share with Ex Libris, we can enhance the MARC record in order to improve the discoverability of your content for Alma customers.

**Contact me for more information!**

## New Collection creation

If you would like to be a development partner and work with us to enhance the workflow of new collection creation within Ex Libris Knowledgebases...

**Contact me for more information!**

## ELUNA Round Table Discussion

If you plan to arrive to Minneapolis in May and attend the ELUNA conference, please join me to a discussion between Ex Libris and Institutions to brainstorm how the content management process can be enhanced.

**Contact me for more information!**

Stay tuned for the next webinar to hear about the new and upcoming **Collection Level** KBART NISO standard and to learn about the **Manifest initiative** which is set to improve the process of creating new collections in our Knowledgebases

# Upcoming Events: Webinars & In-Person



## **A Conversation with Dr. Safiya Noble: New Challenges in DEI, Technology, and Libraries**

April 30, 2024

11:00 am (New York)/4:00 pm (London)

[Registration](#)



## **ELUNA Annual Meeting**

May 14 - 17, 2024

### **Additional Onsite Events**

Developers Day+: May 13-14, 2024

Analytics Afternoon: May 14, 2024

Ex Libris Knowledge Days: May 13-14, 2024

[Registration & Agenda](#)



**Questions?**

Thank You

**Noam Fass**  
Noam.fass@clarivate.com

**About Clarivate**

Clarivate is the leading global information services provider. We connect people and organizations to intelligence they can trust to transform their perspective, their work and our world. Our subscription and technology-based solutions are coupled with deep domain expertise and cover the areas of Academia & Government, Life Sciences & Healthcare and Intellectual Property. For more information, please visit [clarivate.com](https://www.clarivate.com)

**© 2024 Clarivate**

Clarivate and its logo, as well as all other trademarks used herein are trademarks of their respective owners and used under license.