



SYSTEM DOCUMENTATION VERSION 18

Using Version Control to Update the ALEPH GUI

Ex Libris

Version Checking with ALEPH Version 18

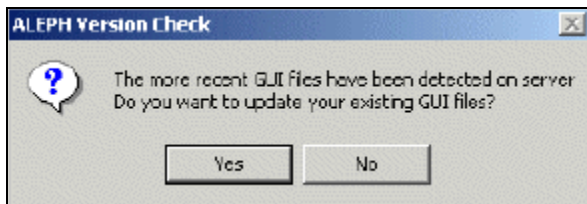
ALEPH provides a Version Check tool that is used to distribute GUI client files from a central server to an individual workstation. Integrated inside all GUI modules, it informs you automatically about the latest updates and replaces the older files by the new ones on your request.

There are two ways of accessing the Version Check:

1. Automatically: ALEPH version check message appears when a new session is started
2. Manually: Update version window from the ALEPH menu

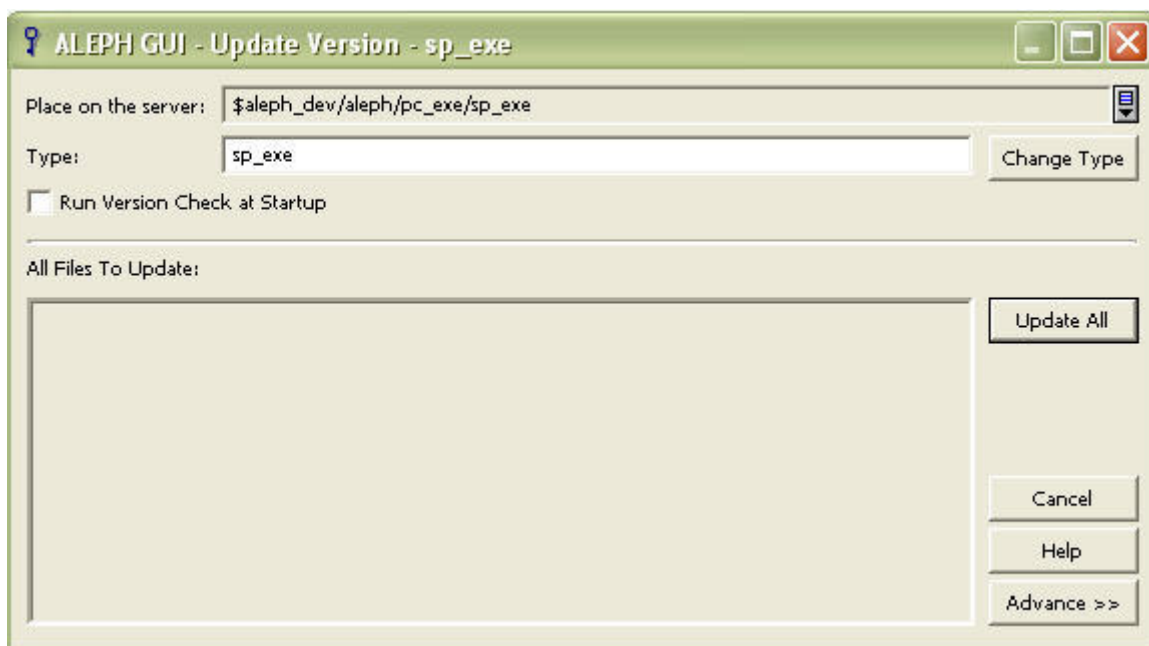
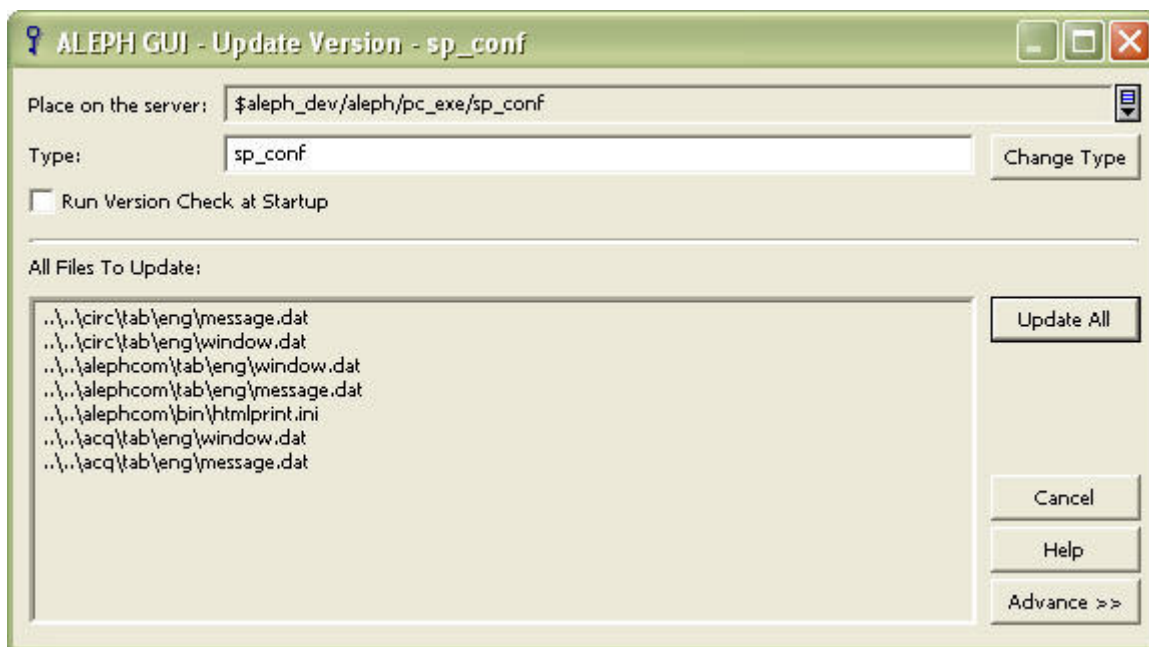
Updating Files from the Version Check

When a new session is started, the system checks if new files have been added to the server and if so, whether they are newer than the corresponding files on the local PC. If new files have been detected on the server and they are newer than the corresponding files on the local PC (according to their date), an additional check is made to detect whether any update has been already performed that day. Only one update is allowed per day. If no update has been made that day, the system generates the ALEPH Version Check message:



To Update Your Local Files:

1. If the Version Check message does not appear automatically when the session is opened, select **ALEPH/Version Check** from the ALEPH main menu.
2. From the Version Check message, click "Yes". The Update Version window opens:



At this point you can update the files on your PC using the **ALEPHGUI - Update Version** window.

3. When you have completed the fields:

- To update all new files that the system has detected, click “Update All”. This operation will close the GUI and open it again.
- To update selected files, click Advance. This opens a list of new files on the server. Select files that you want to update, and click “Update”. This operation will close the GUI and open it again.

Changing Version Check Defaults for Your PC

Another way to define how and whether Version Check is run automatically is within the C:\AL500\ALEPHCOM\TAB\ALEPHCOM.INI file. As shown below, you may set the default library, default directory on server where GUI is located, and whether the version control check will be run at startup:

[VersionControl]

Library=XXX01

Type=

RunAtStartup=

[Version Control]

Can be set to access different distribution directories based on the alephcom.ini file. Additional parameters control how the application communicates with the server:

Library=XXXX

The communication protocol requires this value. The default is USM01.

Type=xxxx

This is the directory name under the pc_exe directory. If it is not set, then the system looks for pc_exe./version.

Together with the additional parameters, **[Version Control]** allows a site to set up multiple distribution points for various GUI client configurations on the same server (for example, Circulation, Cataloging, Acquisitions/Serials, and even per person).

RunAtStartup= Y/N

Controls whether the version control check will be run at start up. Selecting the *Run Version at Startup* option in the Update Version window automatically sets this value to Y. Clearing the *Run Version at Startup* option in the Update Version window automatically sets this value to N.