



How to Use the ADAM Scan Interface

Version 18 and later

CONFIDENTIAL INFORMATION

The information herein is the property of Ex Libris Ltd. or its affiliates and any misuse or abuse will result in economic loss. DO NOT COPY UNLESS YOU HAVE BEEN GIVEN SPECIFIC WRITTEN AUTHORIZATION FROM EX LIBRIS LTD.

This document is provided for limited and restricted purposes in accordance with a binding contract with Ex Libris Ltd. or an affiliate. The information herein includes trade secrets and is confidential.

DISCLAIMER

The information in this document will be subject to periodic change and updating. Please confirm that you have the most current documentation. There are no warranties of any kind, express or implied, provided in this documentation, other than those expressly agreed upon in the applicable Ex Libris contract. This information is provided AS IS. Unless otherwise agreed, Ex Libris shall not be liable for any damages for use of this document, including, without limitation, consequential, punitive, indirect or direct damages.

Any references in this document to third-party material (including third-party Web sites) are provided for convenience only and do not in any manner serve as an endorsement of that third-party material or those Web sites. The third-party materials are not part of the materials for this Ex Libris product and Ex Libris has no liability for such materials.

TRADEMARKS

"Ex Libris," the Ex Libris bridge, Primo, Aleph, Alephino, Voyager, SFX, MetaLib, Verde, DigiTool, Preservation, URM, Voyager, ENCompass, Endeavor eZConnect, WebVoyage, Citation Server, LinkFinder and LinkFinder Plus, and other marks are trademarks or registered trademarks of Ex Libris Ltd. or its affiliates.

The absence of a name or logo in this list does not constitute a waiver of any and all intellectual property rights that Ex Libris Ltd. or its affiliates have established in any of its products, features, or service names or logos.

Trademarks of various third-party products, which may include the following, are referenced in this documentation. Ex Libris does not claim any rights in these trademarks. Use of these marks does not imply endorsement by Ex Libris of these third-party products, or endorsement by these third parties of Ex Libris products.

Oracle is a registered trademark of Oracle Corporation.

UNIX is a registered trademark in the United States and other countries, licensed exclusively through X/Open Company Ltd.

Microsoft, the Microsoft logo, MS, MS-DOS, Microsoft PowerPoint, Visual Basic, Visual C++, Win32,

Microsoft Windows, the Windows logo, Microsoft Notepad, Microsoft Windows Explorer, Microsoft Internet Explorer, and Windows NT are registered trademarks and ActiveX is a trademark of the Microsoft Corporation in the United States and/or other countries.

Unicode and the Unicode logo are registered trademarks of Unicode, Inc.

Google is a registered trademark of Google, Inc.

Copyright Ex Libris Limited, 2010. All rights reserved.

Document released: October 13, 2010

Web address: <http://www.exlibrisgroup.com>

Table of Contents

1	INTRODUCTION	4
2	CREATE SCAN JOBS.....	5
3	FIELD “SCJ” FOR SCAN JOBS.....	8
3.1	Display Scan Job Details	8
4	REQUESTS FOR SCAN JOBS (WEB-SERVICES)	10
5	CONFIGURATION SERVER	12
5.1	Switch Setting.....	12
5.2	Messages.....	12
5.3	Scan parameters	12
5.4	Display Scan Parameters in Full View of the BIB Record.....	12
5.5	Display Scan Job Details from Full View	12
5.6	Delivery of Scan Job information (Web-Services).....	13
6	CONFIGURATION CLIENT	14
6.1	Messages and Windows.....	14
6.2	Default Values for Scan Parameters	14

1 Introduction

The purpose of the ALEPH scan interface is the implementation of an automated workflow in order to enrich the libraries' catalogue with digital objects information and appropriate metadata by using the ALEPH Digital Assets Module (ADAM).

The ALEPH Scan Interface enables the creation of scan jobs for items directly from the ALEPH GUI Client. Scan jobs which have been created in ALEPH can be requested from external systems (e.g. scan software applications) in order to create the scans.

For this purpose, the external system requests information about the scan jobs via Web-Services (ALEPH-X-Server, OAI) and is provided with the relevant information, including:

- Bibliographic information
- Item and owner information
- Scan parameters

Images or text file scans which have been created from external systems can be loaded into ALEPH as long as they are delivered in XML format (Dublin Core or MARC) and they include the following identifiers:

- Identifier of the ALEPH bibliographic record to which the item that have been scanned is linked (e.g. 001)
- Identifier of the Scan Job in order to validate that the scan has been created

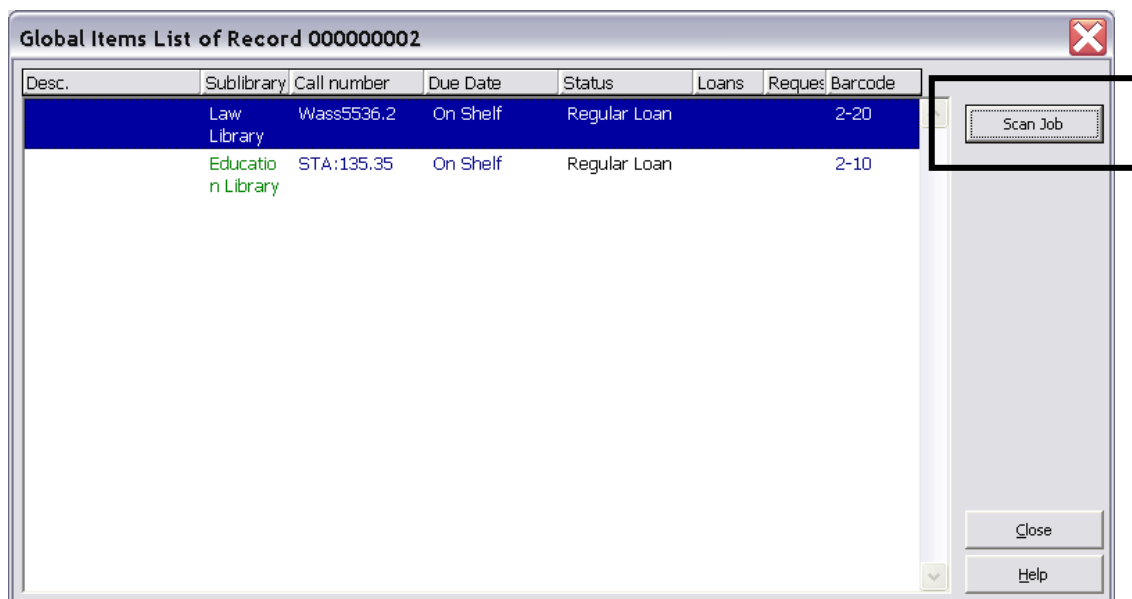
Furthermore, scans which have been created may be delivered to DigiTool. If so, the enrichment of the ALEPH catalogue can be automated by using the DigiTool/ADAM-interface.

2 Create Scan Jobs

The full view of the bibliographic record shows information about digital objects scans which already exist and scan jobs which are in process.

From the full view of the bibliographic record, the user clicks on the button **Item List**. ALEPH shows either a global items list (ITMG) which includes items from all sublibraries, or a sublibrary specific item list which includes items from one sublibrary only (ITM).

From the item list, click the button **Scan Job** to open a window to enter information about a new scan job.



The user enters parameters for the scan job: information about the creator of the scan job and details to the object to be scanned. Once created, a scan job cannot be deleted or changed. The parameters are:

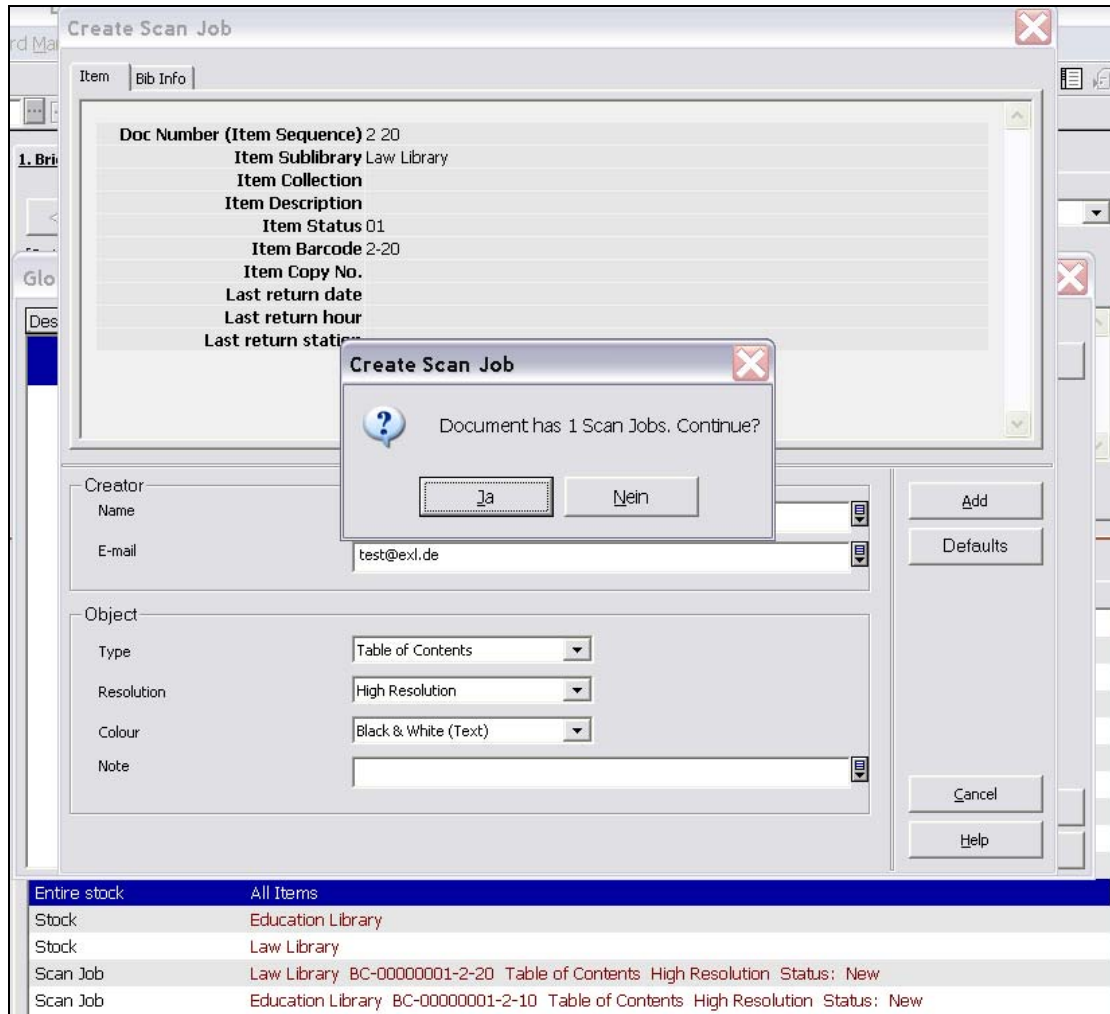
- **Name:** Name of the creator of the scan job
- **E-mail address:** E-mail-address of the creator of the scan job
- **Type:** Object type to be scanned. This may be Table of Contents, Cover, etc. The selection menu is configurable.
- **Resolution:** Resolution of the scan. May be high, medium, low, 300pi, etc. The selection menu is configurable.
- **Colour:** Colour of the scan. May be coloured, black & white, etc. The selection menu is configurable.
- **Note:** Additional information about the scan to be created.

The scan parameters are saved in the bibliographic record, tag “SCJ”.

In an ALEPH consortium, the management of scan jobs is part of the central system. Libraries have to create scan jobs for specific items in the central catalogue.

Each scan job which has been initiated from local libraries’ staff is saved in the bibliographic record of the central catalogue (tag “SCJ”). Thus,

- The system checks if scan jobs already exist. If they do, a message is displayed. The check is performed according to the subfields \$a, \$b, \$c and \$d of field “SCJ” (see chapter 3 *Field “SCJ” for Scan Jobs*).



- Within an ALEPH consortium, the local library is able to see existing scan jobs from other libraries.
- Within an ALEPH consortium, scan jobs are part of the replication process, which means that the information is available in both central view and local view.

Sys. no.	00000002
1.Person	Wassermann, Larry
Title proper	All of Statistics
Furth.tit.inf.	A concise course in statistical inference
Author	Larry Waasermann
1.Place of publ.	Berlin
1.Publisher	Springer
Date of publ.	2004
Pagination	XIX, 442 p.
ISBN	0-387-40272-1
Entire stock	All Items
Stock	Education Library
Stock	Law Library
Scan Job	Law Library BC-00000001-2-20 Table of Contents High Resolution Status: New
Scan Job	Education Library BC-00000001-2-10 Table of Contents High Resolution Status: New

3 Field “SCJ” for Scan Jobs

Details of the Scan Job are saved in the bibliographic record, tag SCJ. SCJ includes the following information:

Subfield	Contents	Comments
a	Item Rec Key	Rec Key (System no./Sequence) of the item for which the scan has to be created
b	ADM Library	ADM Library of the item
c	BIB Library	BIB Library of the BIB record that includes the scan job
d	BIB Doc Number	System no. of the BIB record that includes the scan job
e	Sub Library	Sub Library of the item for which the scan have to be prepared
f	Barcode	Barcode of the item for which the scan has to be created
g	Call No	Call No of the item for which the scan has to be created
h	Order Number	Order number of the scan job (001 of the BIB record + Barcode/Call no of the item)
i	Status	Status of the scan job
j	Open date	Date on which the scan job has been created
k	Update date	Date on which the scan job has been updated
l	Cataloger name	Name of the cataloger who created the scan job
m	Cataloger e-mail address	E-mail address of the cataloger who created the scan job
n	Object type	Type of the object to be scanned
o	Object Colour	Colour of the scan
p	Object Resolution	Resolution of the scan
q	Object Note	Note to the scan job

Tag “SCJ” should be deactivated in cataloging mode for both, central catalogue and local library catalogue. This can be done by using ALEPH table \$data_tab/tab_cat_hidden_fields.

3.1 Display Scan Job Details

In full view of the bibliographic record, double click on the field SCJ to show the scan job details.

Sys. no.	00000002
1.Person	Wassermann, Larry
Title proper	All of Statistics
Furth.tit.inf.	A concise course in statistical inference
Author	Larry Waasermann
1.Place of publ.	Berlin
1.Publisher	Springer
Date of publ.	2004
Pagination	XIX, 442 p.
ISBN	0-387-40272-1
Entire stock	All Items
Stock	Education Library
Stock	Law Library
Scan Job	Law Library BC-00000001-2-20 Table of Contents High Resolution Status: New

<< >>

Locate

Show Like

Headings

External

Link

Item List

Cataloging

Items

Scan Job Details X

Scan Job
Item
Bib Info

Doc Number (Item Sequence) 2 20

Item Sublibrary Law Library

Order Number BC-00000001-2-20

Barcode 2-20

Call Number Wass5536.2

Object Type Table of Contents

Object Colour Black & White (Text)

Object Resolution High Resolution

Object Note Note

Cataloger Name Test user

Cataloger E-Mail Address test@exl.de

Status New

Open Date 27/06/2006

Update Date 27/06/2006

Close

4 Requests for Scan Jobs (Web-Services)

The scan job information is part of the bibliographic record. The information can be requested by using ALEPH-X-Server or OAI.

Assuming that field "SCJ" is indexed in ALEPH, a request to the ALEPH-X-Server may include the query "scj=xyz" to get the relevant bibliographic, item, and scan job information. For example, subfields \$e (Owner), \$i (Status) and \$j (Open date) may be indexed to the heading index "SCJ".

The request to the ALEPH-X-Server has two levels:

- (1) A FIND-Request to receive a result set according to the search term
- (2) A PRESENT-Request to receive specific records from the result set.

(1) The FIND request to the ALEPH-X-Server must have the following syntax:

```
http://server:port/X?op=find&request=scj=llawnew20060626&base=cen02
```

The answer from the ALEPH-X-Server is an XML-file which includes information about the result set and the number of records within the set:

```
<find>
  <set_number>000839</set_number>
  <no_records>000000001</no_records>
  <no_entries>000000001</no_entries>
  <session-id>IEH2DBQYAGTQQ95CBNBE9XPCV5LRD25IQ2KFBG3DJ38B2KMFKB
</session-id>
</find>
```

(2) The PRESENT request is to ask for the records information within the set and must have the following syntax:

```
http://server:port/X?op=present&set_number=000839&set_entry=000000001&session_id=IEH2DBQYAGTQQ95CBNBE9XPCV5LRD25IQ2KFBG3DJ38B2KMFKB&base=cen02
```

The answer from the ALEPH-X-Server is an XML-file which includes the bibliographic record information including the scan job details. This information can be used for further processing.

```
<?xml version = "1.0" encoding = "UTF-8"?>
  <present>
    <record>
      <record_header>
      </record_header>
      <doc_number>49714</doc_number>
      <metadata>
        <oai_marc>
          <fixfield id="FMT">SE</fixfield>
          <fixfield id="LDR">01036aas^^2200313^a^4500</fixfield>
```

```
<fixfield id="001">000049714-2</fixfield>
<varfield id="076" i1=" " i2=" ">
  <subfield label="a">USB Köln</subfield>
  <subfield label="b">Register</subfield>
  <subfield label="c">bitonal</subfield>
  <subfield label="d">300 dpi</subfield>
  <subfield label="e">OCR-Korrektur notwendig</subfield>
  <subfield label="f">176/2345-5</subfield>
  <subfield label="g">176/2345-5/000049714-2</subfield>
</varfield>
</oai_marc>
</metadata>
</record>
<session-
id>YUDFBMMHXLQ8VH742FLKJ56QHPRX5CIPT7K6DL9V6BYQPLGAB</session-id>
</present>
```

5 Configuration Server

5.1 Switch Setting

To activate the ALEPH Scan Interface, add the following parameter to \$data_tab/tab100 of the BIB library:

```
CREATE-SCAN-JOB=Y
```

5.2 Messages

The following entries are needed in \$alephe_root/error_<lng>/pc_sear_c1023:

```
!  
!!!!-!!!!-!-!!!!!!!!!!!!!!!!!!!!!!!!!!!!!!!!!!!!!!!!!!!!!!!!!!!!!!>  
[...]  
0025 0000 L Scan Job does not exist.  
  
0201 0001 L Creator is empty.  
0202 0002 L Mailing address is empty.  
0203 0003 L Object Type is empty.  
0204 0004 L Object Resolution is empty.  
0205 0005 L Object Colour is empty.  
0206 0000 L Barcode missing.
```

5.3 Scan parameters

The selection menus for scan parameters have to be added to \$data_tab/pc_tab_exp_field.<lng> of the BIB library:

```
!          1          2          3          4  
!!!!!!!!!!!!!!!!!!!!!!!!!!!!-----!-!!!!!!!!!!!!!!!!!!!!!!!!!!!![...] -!!!!!!!!!!!!!!!!!!!!!!!!!!!![...]  
OBJECT-RESOLUTION          L High Resolution          high  
OBJECT-RESOLUTION          L Low Resolution           low  
OBJECT-RESOLUTION          L Medium Resolution        medium  
  
OBJECT-TYPE                 L Table of Contents          toc  
OBJECT-TYPE                 L Cover                      cov  
  
OBJECT-COLOUR               L Black & White (Text)      bw  
  
SCAN-JOB-STATUS             L New                          NEW
```

5.4 Display Scan Parameters in Full View of the BIB Record

To display tag “SCJ” in the records’ full view, a definition for SCJ has to be added to \$data_tab/edit_doc_999.lng of the BIB library:

```
!  
!1  2  3      4      5 6 7      8      9 0 11  2  13  4 15 16  
!!-!!!!!!-!-!!!!!!!!!!!!-!-!-!!!!!!!!!!!!!!!!!!!!!!!!!!!!-!-!-!!!-!-!!!!-!-!-!!  
## SCJ          D LScan Job          Y      E
```

5.5 Display Scan Job Details from Full View

Scan Job Details are displayed in a separate window which can be opened from the records’ full view by double-clicking on tag SCJ.

The display is based on XML format. Definitions are in the form “scan-job-expand”, directory pc_display_lng.

5.6 Delivery of Scan Job information (Web-Services)

Information about the scan job should not be provided in internal format, but rather external format, e.g. to replace the codes of the sublibrary into normal text. The new expand routine “expand_doc_scj” can be used to create an external field (e.g. 076) which contains the following subfields:

\$a Owner of the scan job (normal text)
\$b Order Number
\$c Object type
\$d Colour
\$e Resolution

“expand_doc_scj” has to be defined in \$data_tab/tab_expand of the BIB library, for expand menu “WWW-X”. The parameter CODE= can be used to define the external field which should contain the scan job details.

```
! 1 2 3  
!!!!!!!!!!!!-!!!!!!!!!!!!!!!!!!!!!!!!!!!!!!!!!!!!-!!!!!!!!!!!!!!!!!!!![...]  
[...]  
WWW-X expand_doc_scj CODE=076
```

6 Configuration Client

6.1 Messages and Windows

The following definitions have to be added to the client configuration files:

`./alephcom/tab/lng/message.dat:`

```
!           1           2           3 4 5           6
!-----[...]!-----!-!-!-!----->

DocumentHasScanJob      Create Scan Job      YN      Q Document has %d Scan
                        Create Scan Job      0       I Scan Job %s
                        Create Scan Job      0       E Barcode missing.
WithoutBarcode          Create Scan Job      0       E Barcode missing.
```

`./alephcom/tab/lng/window.dat:`

```
[...]
SearchGlobalItems.Btn.Scan      #&Scan Job
SearchSublibItems.Btn.Scan     #&Scan Job
[...]
ScanJobDlg.Title                #Create Scan Job
ScanJobDlg.Btn.Add              #&Add
ScanJobDlg.Btn.Defaults        #&Save Defaults
ScanJobDlg.Btn.Cancel          #&Cancel
ScanJobDlg.Group.Creator        #Creator
ScanJobDlg.Group.Object        #Object
ScanJobDlg.Static.Name         #Name
ScanJobDlg.Static.EMail        #E-mail
ScanJobDlg.Static.Type         #Type
ScanJobDlg.Static.Resolution    #Resolution
ScanJobDlg.Static.Colour       #Colour
ScanJobDlg.Static.Note         #Note
ScanJobInfo.Title              #Scan Job Details
ScanJobInfo.Btn.Cancel         #&Close
ScanJobInfo.Btn.Help           #&Help
```

6.2 Default Values for Scan Parameters

Default values for scan parameters can be defined in file `./catalog/tab/catalog.ini`, label `[ScanJob]`. Example:

```
[ScanJob]
CreatorName=Test user
CreatorEMail=xy@exl.de
ObjectType=toc
ObjectResolution=high
ObjectColour=bw
ObjectNote=Note
```

Please note that the values for the scan parameters have to be defined `$data_tab/pc_tab_exp_field.lng`, col. 4.