



How to Install the Client Network

Version 20.0

CONFIDENTIAL INFORMATION

The information herein is the property of Ex Libris Ltd. or its affiliates and any misuse or abuse will result in economic loss. DO NOT COPY UNLESS YOU HAVE BEEN GIVEN SPECIFIC WRITTEN AUTHORIZATION FROM EX LIBRIS LTD.

This document is provided for limited and restricted purposes in accordance with a binding contract with Ex Libris Ltd. or an affiliate. The information herein includes trade secrets and is confidential.

DISCLAIMER

The information in this document will be subject to periodic change and updating. Please confirm that you have the most current documentation. There are no warranties of any kind, express or implied, provided in this documentation, other than those expressly agreed upon in the applicable Ex Libris contract. This information is provided AS IS. Unless otherwise agreed, Ex Libris shall not be liable for any damages for use of this document, including, without limitation, consequential, punitive, indirect or direct damages.

Any references in this document to third-party material (including third-party Web sites) are provided for convenience only and do not in any manner serve as an endorsement of that third-party material or those Web sites. The third-party materials are not part of the materials for this Ex Libris product and Ex Libris has no liability for such materials.

TRADEMARKS

"Ex Libris," the Ex Libris bridge, Primo, Aleph, Alephino, Voyager, SFX, MetaLib, Verde, DigiTool, Preservation, URM, Voyager, ENCompass, Endeavor eZConnect, WebVoyage, Citation Server, LinkFinder and LinkFinder Plus, and other marks are trademarks or registered trademarks of Ex Libris Ltd. or its affiliates.

The absence of a name or logo in this list does not constitute a waiver of any and all intellectual property rights that Ex Libris Ltd. or its affiliates have established in any of its products, features, or service names or logos.

Trademarks of various third-party products, which may include the following, are referenced in this documentation. Ex Libris does not claim any rights in these trademarks. Use of these marks does not imply endorsement by Ex Libris of these third-party products, or endorsement by these third parties of Ex Libris products.

Oracle is a registered trademark of Oracle Corporation.

UNIX is a registered trademark in the United States and other countries, licensed exclusively through X/Open Company Ltd.

Microsoft, the Microsoft logo, MS, MS-DOS, Microsoft PowerPoint, Visual Basic, Visual C++, Win32,

Microsoft Windows, the Windows logo, Microsoft Notepad, Microsoft Windows Explorer, Microsoft Internet Explorer, and Windows NT are registered trademarks and ActiveX is a trademark of the Microsoft Corporation in the United States and/or other countries.

Unicode and the Unicode logo are registered trademarks of Unicode, Inc.

Google is a registered trademark of Google, Inc.

Copyright Ex Libris Limited, 2009. All rights reserved.

Document released: March 1, 2009

Web address: <http://www.exlibrisgroup.com>

Table of Contents

1	INTRODUCTION	4
2	CUSTOMIZING THE INSTALLATION WIZARD	4
3	INSTALLING THE GUI500.EXE	5
4	NETWORK INSTALLATION (NET500.EXE)	10
	Create Local Directories for Each User	14
5	RE-PACKAGING.....	15
	Re-Packaging of the Installed GUI (Stand-Alone or Main Network)	15
	Re-Packaging the Installed Network	16

1 Introduction

The Aleph client can be installed in stand-alone or network mode. The advantage of network installation over stand-alone installation is that distribution to local PCs is not required when the client software is upgraded or when other changes, such as site-specific tailoring of the client, are performed.

In network installation the client is installed on the LAN (Local Access Network) in such a way that all users are using the same central installation (central files) but are using separate configuration files (user files) such as .ini files, temporary files for printing, and save defaults files. In general, all the local configuration files are opened automatically when the user uses the GUI. If the user wants to perform changes directly on the actual files (e.g. alephcom.ini), he edits the files that are located in his local directory.

Note that the installation wizard can be customized using the `gui500.ini` file for `gui500.exe` and the `net500.ini` file for `net500.exe`. These files determine the default installation wizard settings.

2 Customizing the Installation Wizard

The installation uses a Wizard that prompts the user for different inputs, such as choosing an installation path, selecting typical vs. custom installation, and so forth.

The Wizard can be configured for a silent installation (the user is not asked any questions) or altered to suggest defaults (different from those provided in the standard installation) to the user.

This can be configured by changing file `Gui500.ini` or `Net500.ini`, and repackaging `Gui500.exe` or `Net500.exe`, respectively.

This is how `Gui500.ini` is supplied in the version:

```
[Defaults]
Prompt=Y
DefaultInstallationPath=C:\AL500
IconsGroupName=ALEPH 500
NetType=StandAlone
InstallType=Typical
VersionCheck=Y
Acq=Y
Alephadm=Y
Catalog=Y
Circ=Y
Ill=Y
CALIS=N
InstallGerman=N
```

`Prompt` is the basic flag that allows the creation of a full silent installation procedure without prompting the user.

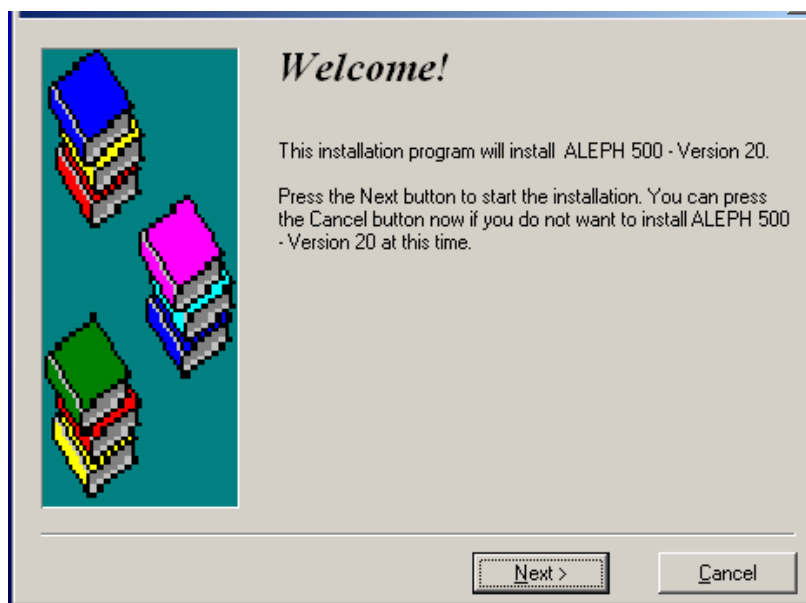
If `Prompt` is set to **N**, all the other values are used during the installation process. Note that if you choose the **N** option, no installation screens are displayed.

If `Prompt` is set to **Y**, all other values are suggested to the user during the installation process, but values may be changed as well.

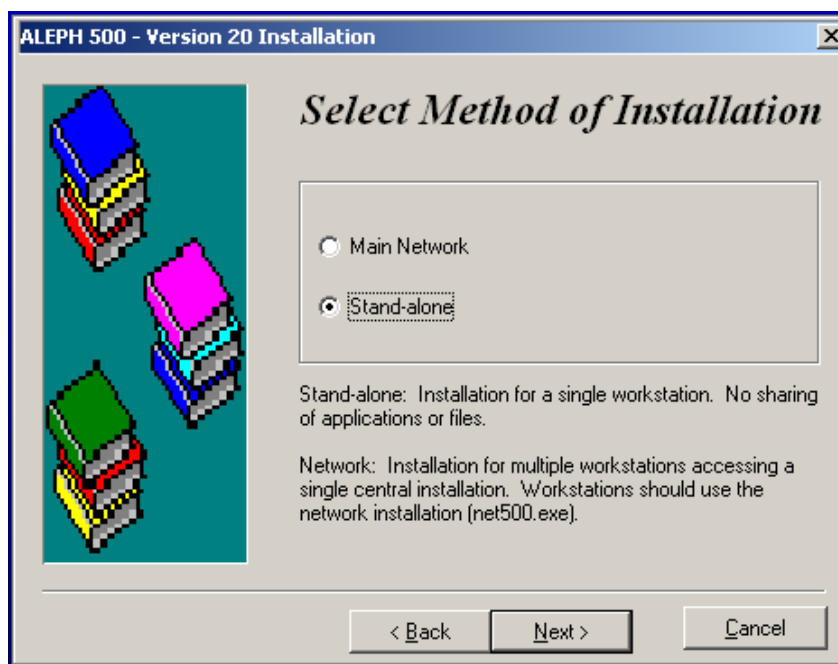
3 Installing the GUI500.EXE

To install the GUI500.exe:

1. Open the GUI.exe file.
2. Create a directory on the PC where GUI500.EXE or GUI500-U.EXE will be inflated.
3. Place the GUI500.EXE or GUI500-u.EXE file into this directory.
4. Double click the file GUI500.EXE or GUI500-U.EXE and click the file Setup.exe. The following window is displayed:



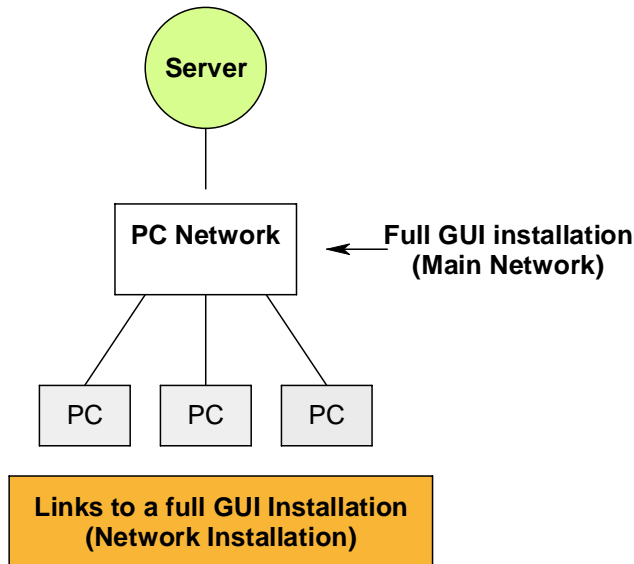
5. Click **Next** and the Select Method Installation dialog box is displayed:



There are two options to install the GUI: Main Network and Stand-Alone.

- **Main Network installation**

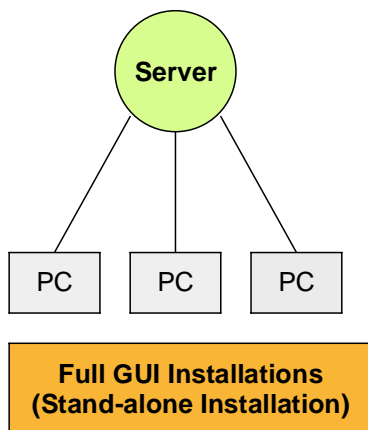
This option installs the GUI on the network for multiple workstations that access a single central installation that contains all or some Aleph GUI modules. The file configuration affects all PCs and may override data at each station (profiles).



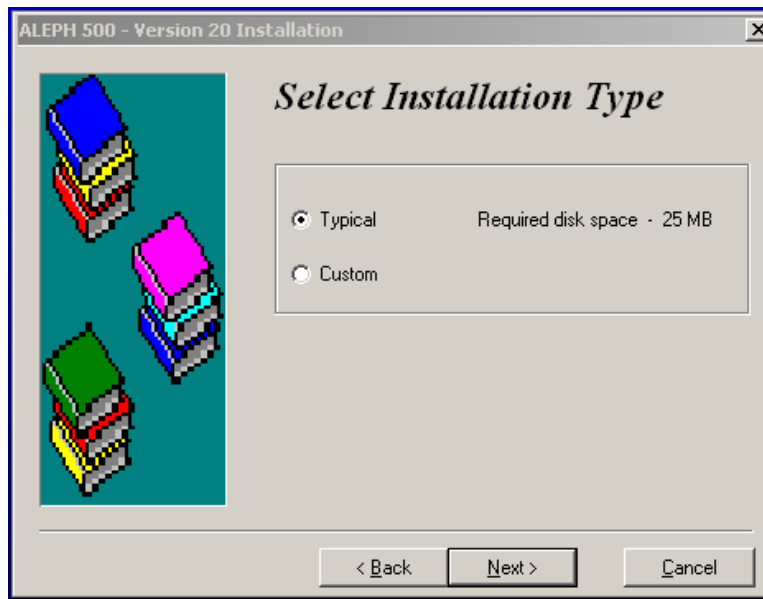
To configure the version for multiple users, see [Create Local Directories for Each User](#).

- **Stand-Alone installation**

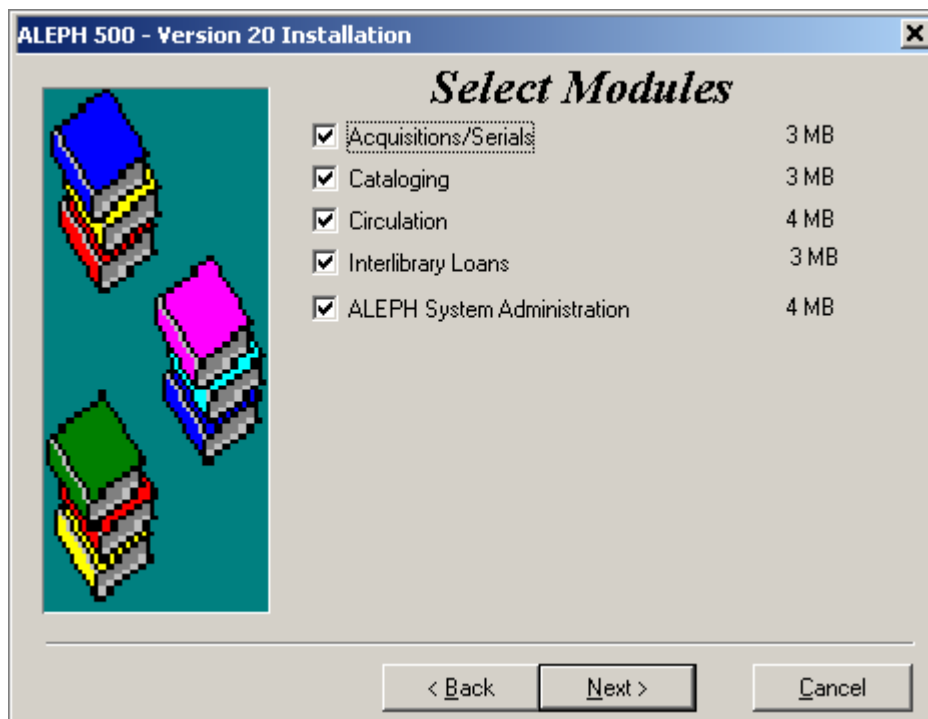
The stand-alone installation is on the single workstation that contains all (typical installation) or some (custom installation) Aleph GUI modules. It supports configuration of all files.



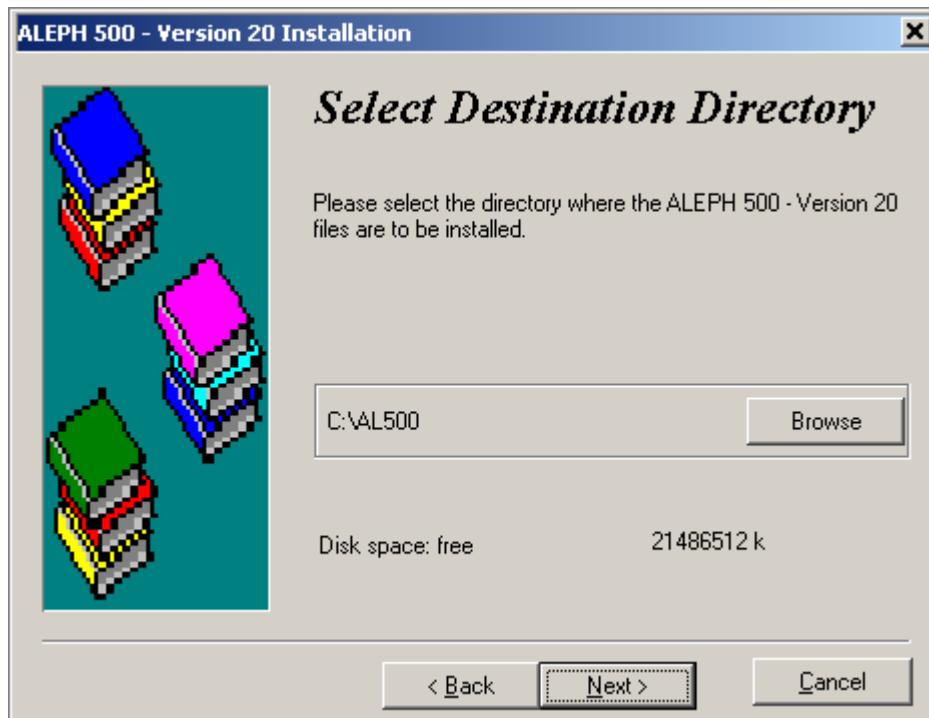
6. Select the installation type.



If you select the **Custom** option the Select Modules dialog box is displayed.



7. Select the modules that you want to install.

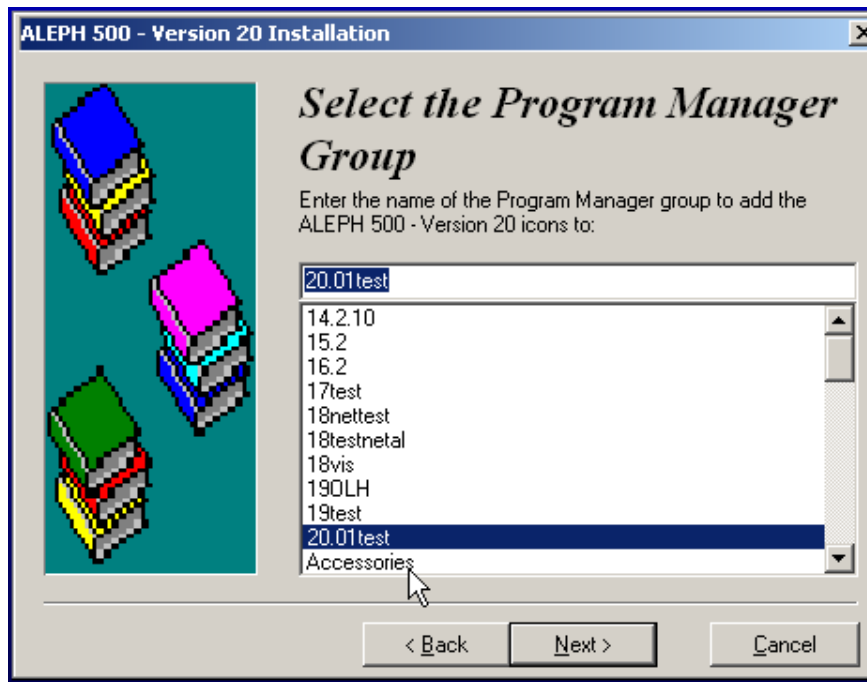


8. Select where you want to install GUI, or use the default, C:\AL500
9. Select an additional language. For this version, the only second available language is German.

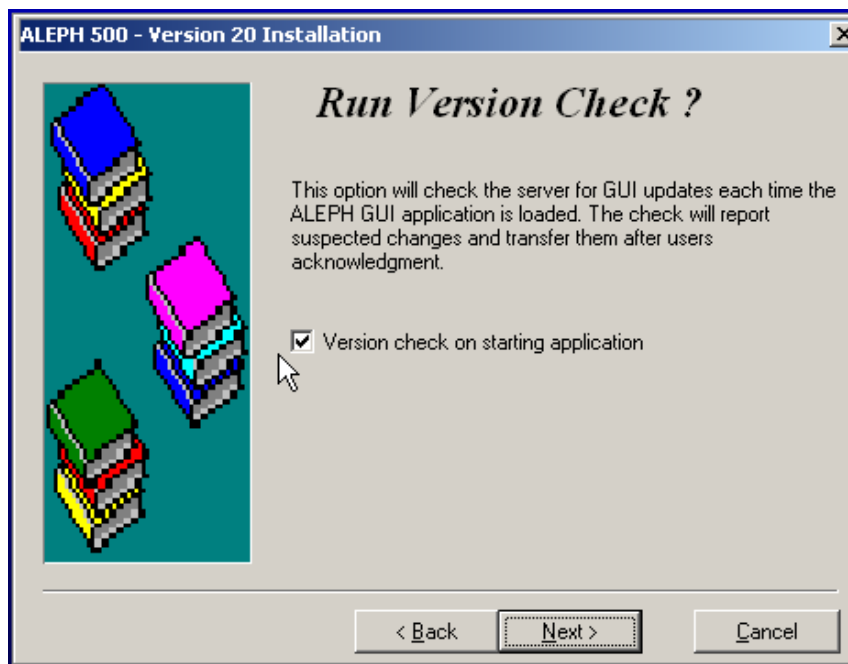


If you select this option, German is installed in addition to English. In this case, xxx_ger language master directories are created under all Tab directories.

For more information regarding Interface Language setup refer to the *ALEPH 20.01 User Guide - ALEPHADM*.



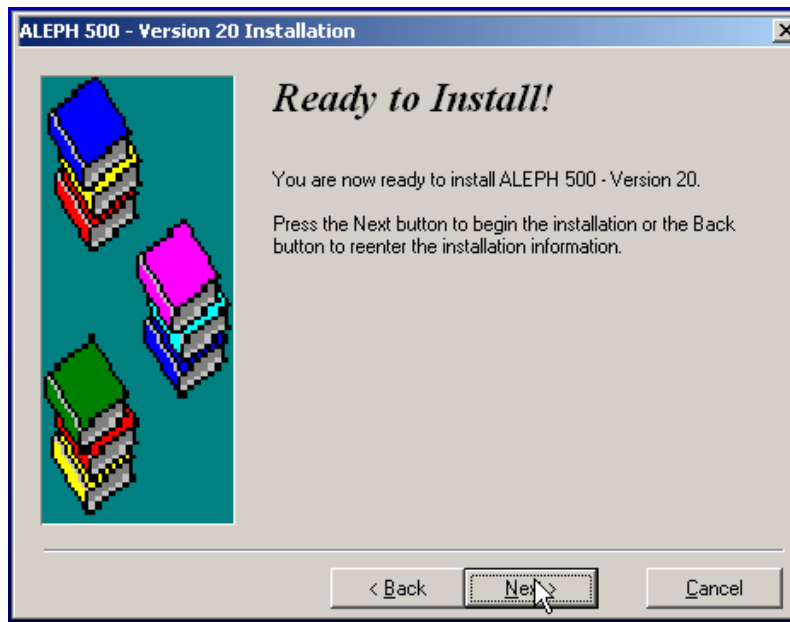
Select the group name for Start->Programs



When selecting this option the following entry in alephcom.ini is set to **Y**.

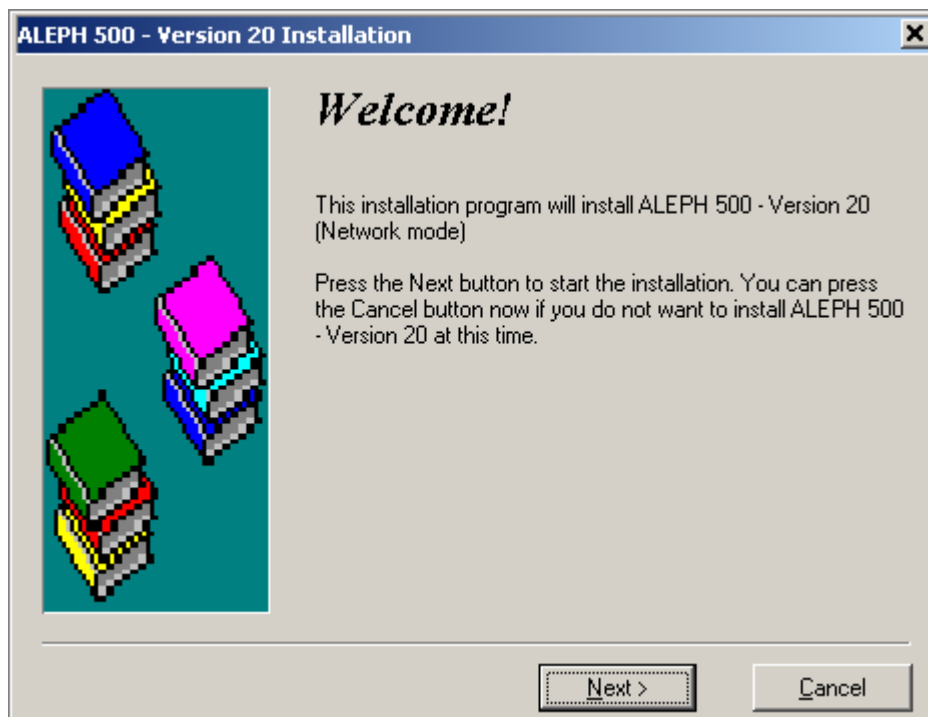
```
[VersionControl]  
RunAtStartup=Y
```

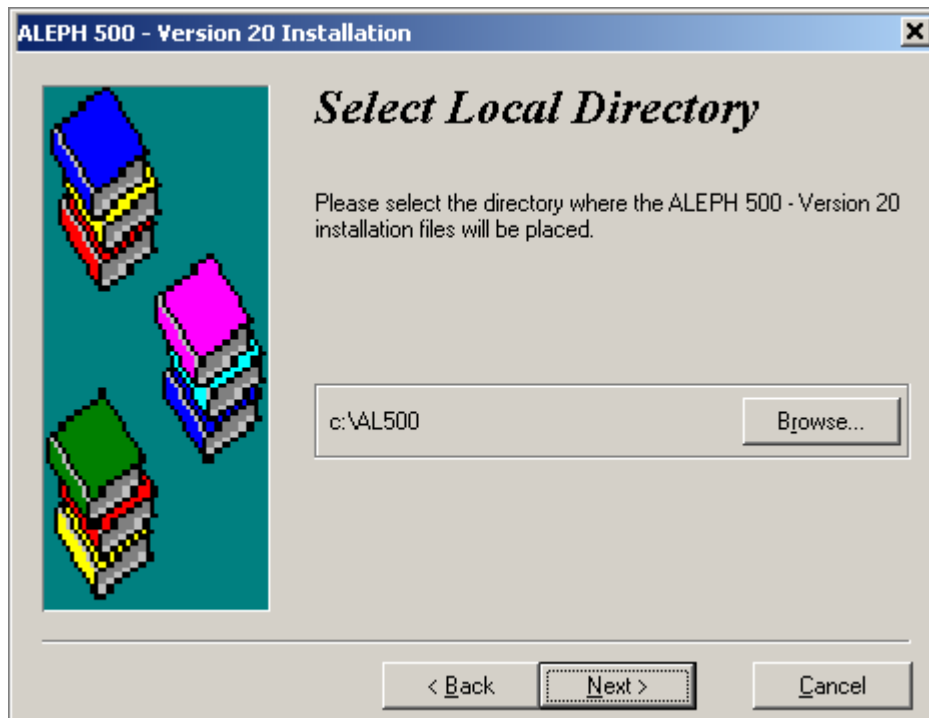
Whenever the GUI is run it checks for new files installed by the SP.



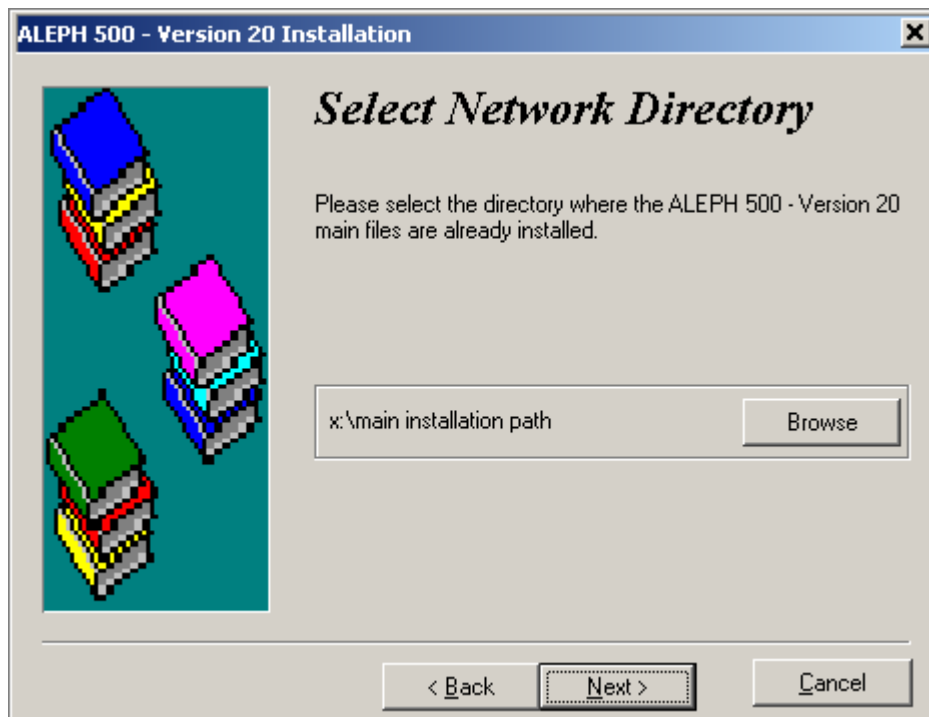
4 Network Installation (net500.exe)

Use this option to finalize the Main Network Installation by directing the PCs to the Main Network GUI. The following screens is displayed.

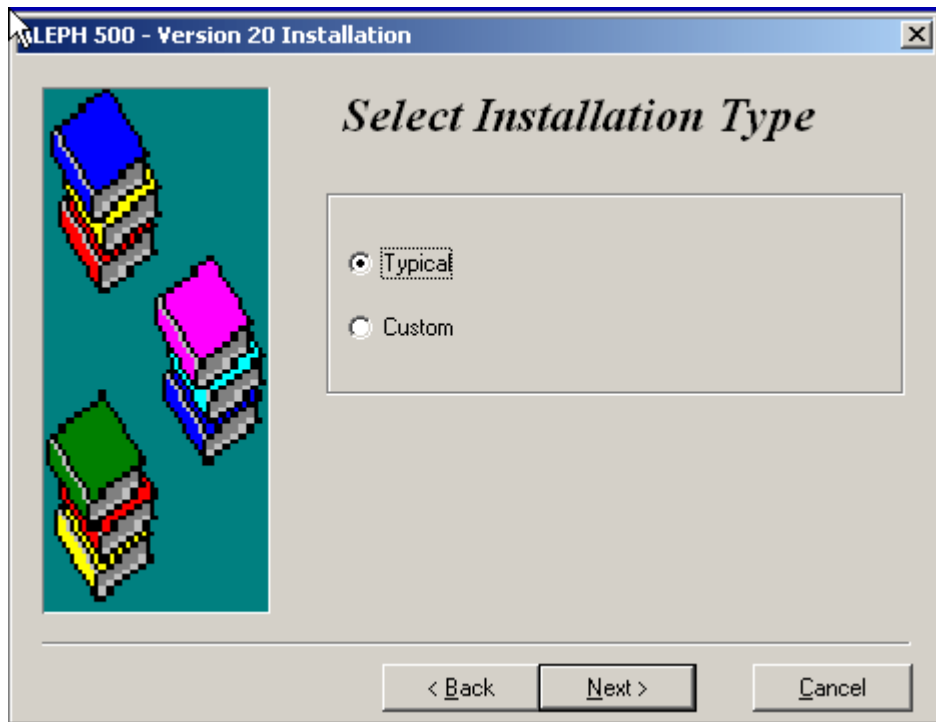




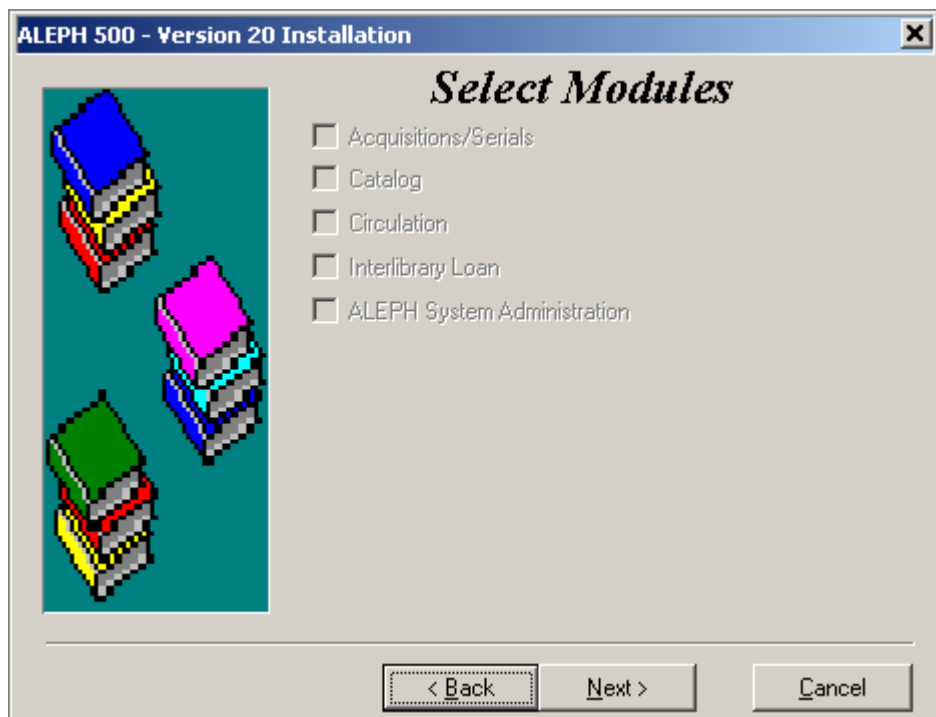
1. Select a local working folder for each PC.



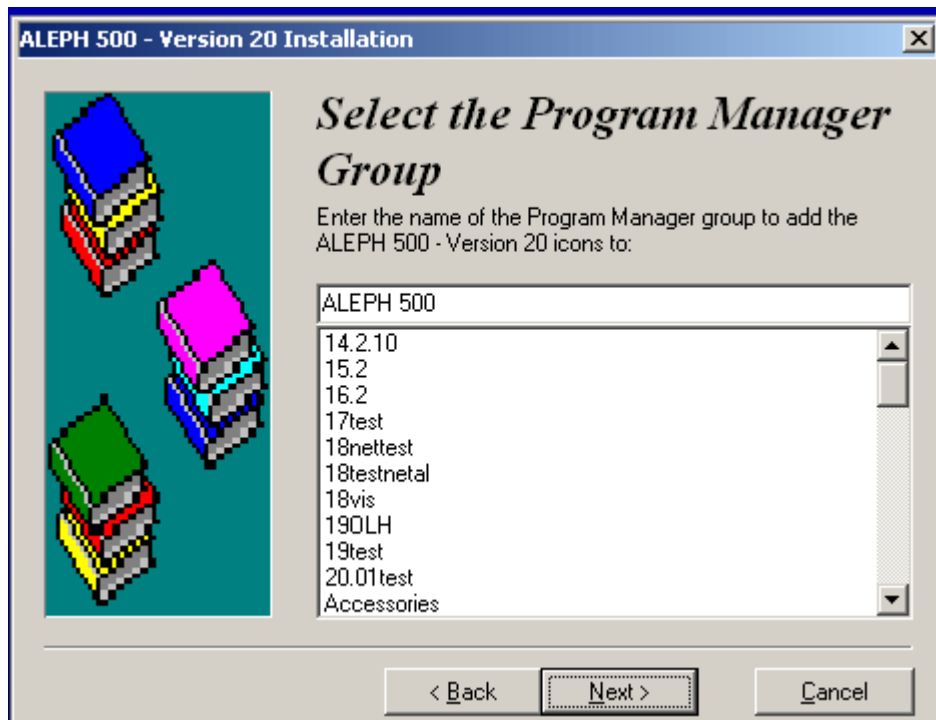
2. Select the path for the installed (existing) Main Network installation.



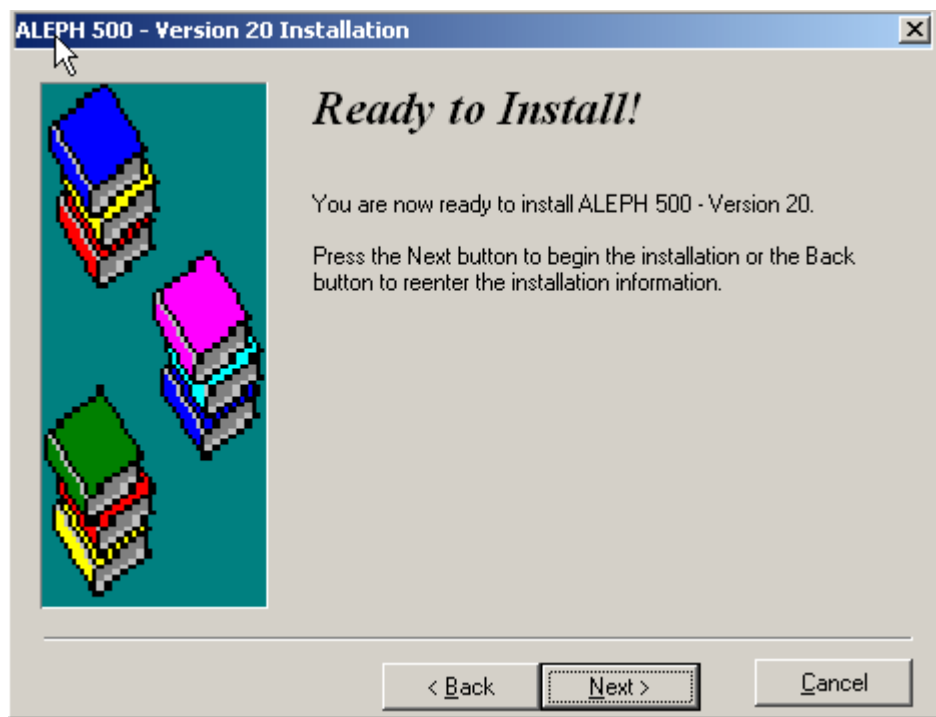
3. Select **Typical** or **Custom**. If you select **Custom**, the Select Modules dialog box is displayed.



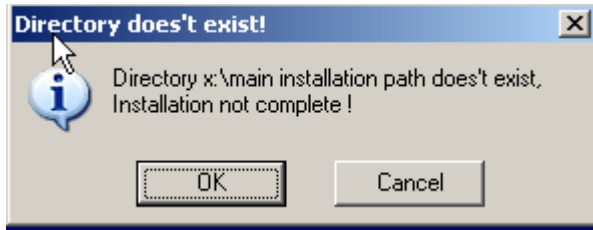
Note that modules that are not installed in the selected Network Directory are grayed out.



4. Select the program manager group.



If the selected Network Directory does not exist, the following message is displayed.

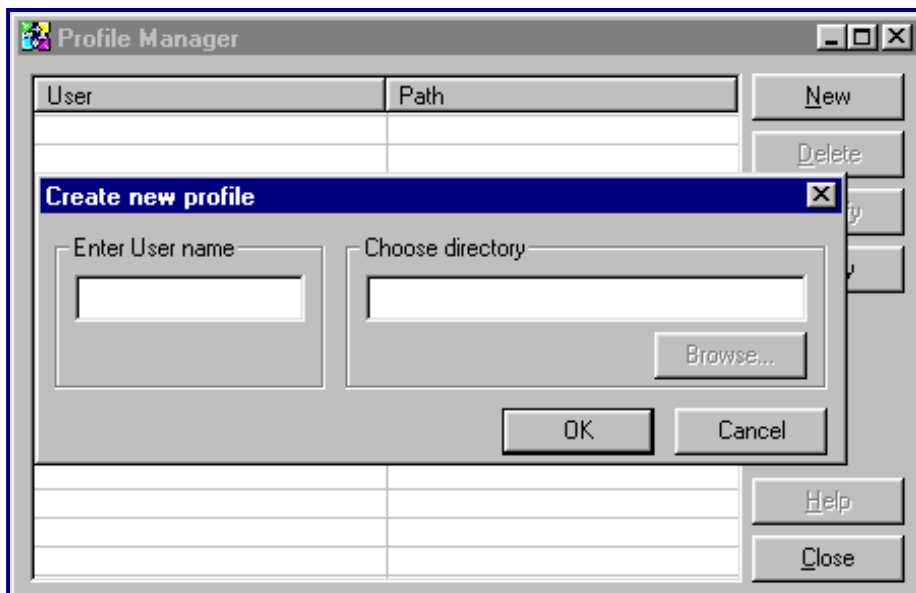


Create Local Directories for Each User

1. From within ALEPH, select the **Alephadm** module.

Note: When first accessing Alephadm (or any other module accessed before setting up Profiles using the Alephadm client), you are prompted for a profile name. Enter `default`.

2. Select **Configuration/Profile Manager**. The Profile Manager screen is displayed.
3. Click **New**. The **Create New Profile** screen is displayed:



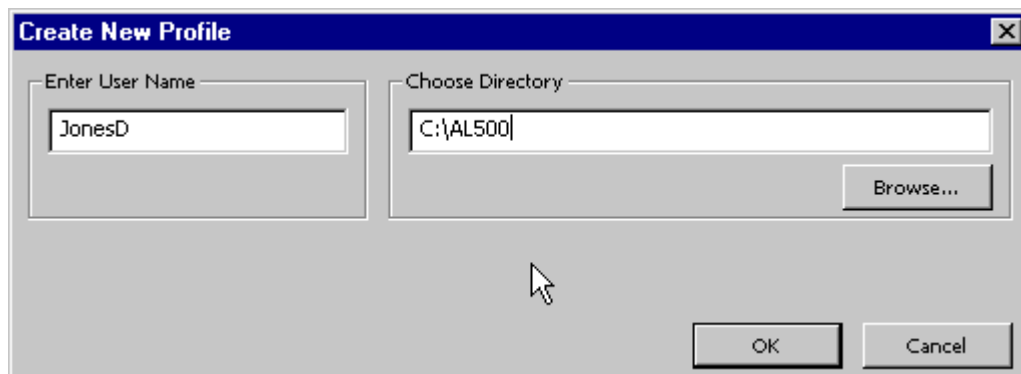
4. For each user, enter the user's name and the full path of the user's local directory. It is recommended to use the logon name used by Windows for the user's name. This way, the default when starting the GUI is the logon name and the user does not have to enter his user name every time he uses the GUI.

Note: It is not recommended to use network definitions such as `\\<server name>\<local computer name>\<drive>\<directory name>` in the **profile.dat** file for local machines because then the user is working through the network on his local machine, instead of just working locally.

Note: You cannot enter a path that begins with \\ in the **Choose directory** field. You can only create a new profile directory on the network drive through ALEPHADM. You cannot create a new directory on a local machine.

In other words, you are not actually going into each user's local machine and creating the directory there. You are only creating the profile. When the local user installs **net500.exe** on his local computer and chooses a profile, the profile directory of the user is created automatically.

In the example below, **Donald Jones** uses the profile **JonesD**.



When he installs **net500.exe** on his local computer, the directory **C:\AL500** is automatically be created.

5. Click **Apply** to apply the profiles. Click **Cancel** to exit. (This may also be done by clicking **Close** and clicking **Yes**.)

Use the **Delete** and **Modify** buttons to change or delete profiles.

When new profiles are created, the given directories are created and for each new profile a line is added to the file **alephcom/tab/profile.dat**. Note that profiles may also be added, edited, or deleted by directly editing this file, but new directories are not automatically created.

5 Re-packaging

Repackaging is a method to create a new **Gui500.exe** or **Net500.exe** package.

The idea behind repackaging is to:

- Save customized automations
- Ensure consistency
- Reduce customization maintenance
- Customize the Installation Wizard

Re-Packaging of the Installed GUI (Stand-Alone or Main Network)

To repackage, you must install the GUI under **C:\AL500**. Any files updated/added to **C:\al500** are repackaged.

Run the script `makeins2.bat` on all Windows platforms from Win2000 and later. The script can be found under the directory in which `GUI500.exe` was unzipped.]

The outcome is a new directory `c:\gui500.new`, which contains the new GUI installation files `GUI500.exe` and `GUI500-u.exe`. They are the files that you will distribute.

Re-Packaging the Installed Network

It is highly recommended to prepare a network package that automatically enters the location of the central installation and not leave this to the individual user. This new **net500.exe** file can then be distributed to the users in various ways (on the Web, by e-mail, and so on).

To create a network package for the users:

1. Double-click `net500.exe`. The files are unzipped
2. Edit `net500.ini`. Put in the correct path of the central installation.
3. Double-click the script `makenet.bat`. The outcome is a new directory `c:\net500.new` that contains the new network installation file `net500.exe`. This is the file that you will distribute.