



System Librarian's Guide – Task Manager

Version 21

CONFIDENTIAL INFORMATION

The information herein is the property of Ex Libris Ltd. or its affiliates and any misuse or abuse will result in economic loss. DO NOT COPY UNLESS YOU HAVE BEEN GIVEN SPECIFIC WRITTEN AUTHORIZATION FROM EX LIBRIS LTD.

This document is provided for limited and restricted purposes in accordance with a binding contract with Ex Libris Ltd. or an affiliate. The information herein includes trade secrets and is confidential.

DISCLAIMER

The information in this document will be subject to periodic change and updating. Please confirm that you have the most current documentation. There are no warranties of any kind, express or implied, provided in this documentation, other than those expressly agreed upon in the applicable Ex Libris contract. This information is provided AS IS. Unless otherwise agreed, Ex Libris shall not be liable for any damages for use of this document, including, without limitation, consequential, punitive, indirect or direct damages.

Any references in this document to third-party material (including third-party Web sites) are provided for convenience only and do not in any manner serve as an endorsement of that third-party material or those Web sites. The third-party materials are not part of the materials for this Ex Libris product and Ex Libris has no liability for such materials.

TRADEMARKS

"Ex Libris," the Ex Libris bridge, Primo, Aleph, Alephino, Voyager, SFX, MetaLib, Verde, DigiTool, Preservation, URM, Voyager, ENCompass, Endeavor eZConnect, WebVoyage, Citation Server, LinkFinder and LinkFinder Plus, and other marks are trademarks or registered trademarks of Ex Libris Ltd. or its affiliates.

The absence of a name or logo in this list does not constitute a waiver of any and all intellectual property rights that Ex Libris Ltd. or its affiliates have established in any of its products, features, or service names or logos.

Trademarks of various third-party products, which may include the following, are referenced in this documentation. Ex Libris does not claim any rights in these trademarks. Use of these marks does not imply endorsement by Ex Libris of these third-party products, or endorsement by these third parties of Ex Libris products.

Oracle is a registered trademark of Oracle Corporation.

UNIX is a registered trademark in the United States and other countries, licensed exclusively through X/Open Company Ltd.

Microsoft, the Microsoft logo, MS, MS-DOS, Microsoft PowerPoint, Visual Basic, Visual C++, Win32, Microsoft Windows, the Windows logo, Microsoft Notepad, Microsoft Windows Explorer, Microsoft Internet Explorer, and Windows NT are registered trademarks and ActiveX is a trademark of the Microsoft Corporation in the United States and/or other countries.

Unicode and the Unicode logo are registered trademarks of Unicode, Inc.

Google is a registered trademark of Google, Inc.

Copyright Ex Libris Limited, 2012. All rights reserved.

Document released: January 1, 2013

Web address: <http://www.exlibrisgroup.com>

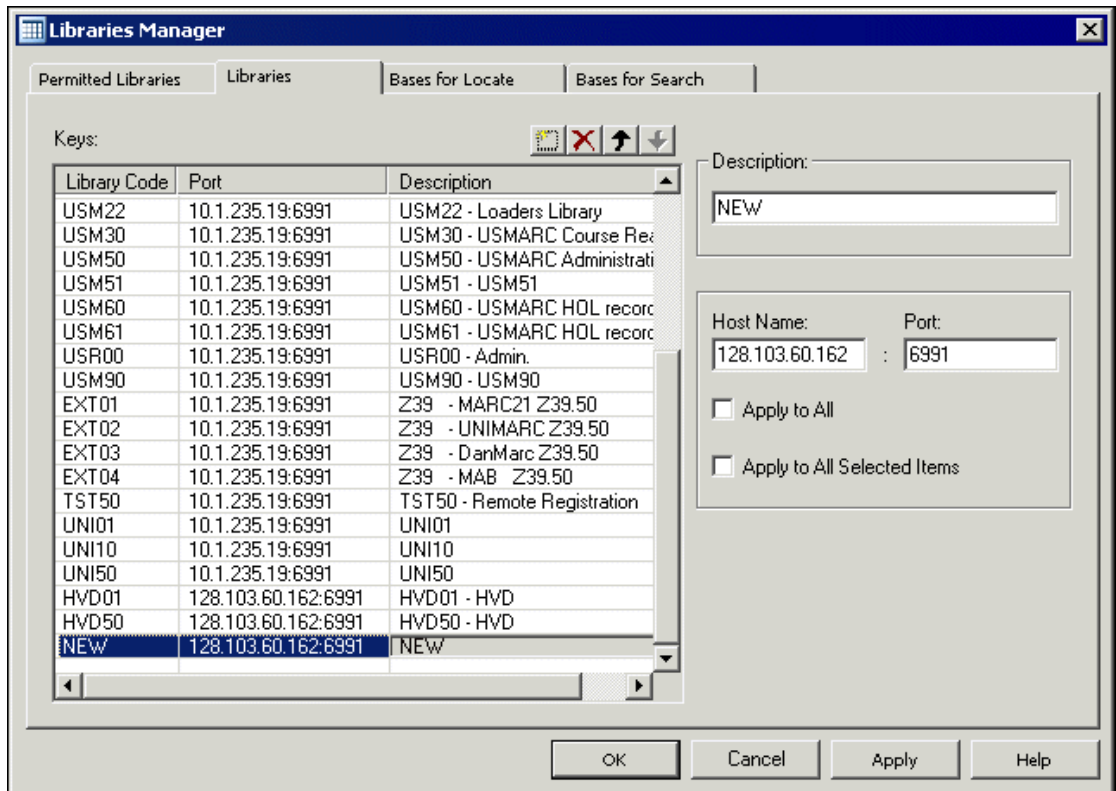
Table of Contents

1	LIBRARIES	4
2	START/STOP BATCH QUEUE.....	4
3	COLUMN HEADINGS.....	5
4	SENDING ALERTS	6

1 Libraries

To define the libraries to which the user can connect in the Task Manager, add the library to the LIBRARY.INI file in the ALEPHCOM/TAB directory of the client. This can be done in either of two ways:

- Open the ALEPHADM client. From the Configuration menu, click **Libraries Manager** (Ctrl+M) and add the library to the Libraries tab:



or

- Go to the ALEPHCOM/TAB directory of the client and open the LIBRARY.INI file located there. Make sure that the desired libraries are defined in this file. Following is a section from the file:

```
!-----1-----+-----2-----3----->
USM01 - USMARC Bibliographic      USM01 ram34.exlibris.co.il:6545
USM10 - USMARC Authority          USM10 ram34.exlibris.co.il:6545
USM30 - USMARC Course Reading    USM30 ram34.exlibris.co.il:6545
USM50 - USMARC Administrative    USM50 ram34.exlibris.co.il:6545
```

Column 1 is the text as it will appear in a menu for the user to choose from.

Column 2 is the code of the library as defined in the tab_base table.

Column 3 is the IP address and port number.

2 Start/Stop Batch Queue

To start or stop the Batch Queue, use UTIL C on the server.

3 Column Headings

You can define the column headings for tables of information. Such tables of information are displayed in the File List, Batch Log and Batch Queue windows and the Print ID Setup dialog box.

In order to define column headings, go to the client's ALEPHCOM/TAB/ENG directory (for English headings. Other headings are located in the appropriate ALEPHCOM/TAB/<LANGUAGE> directory.) Open the TAB_COL.DAT file. Following is a sample of the relevant lines in that file:

```

1                2 3                4 5    6 7    8 9 10
JOBMGR_LCL_FILE_LIST L Local Name      01 030 01 C01          File Name
JOBMGR_LCL_FILE_LIST L Local Date      02 025 02 C02          File Date
JOBMGR_LCL_FILE_LIST L Local Time      03 025 03 C03          File Time
JOBMGR_LCL_FILE_LIST L Local Size      04 020 04 C04          File Size

```

Column 1 is the unique code by which the system identifies this set of column headings. Following are the codes for the other sets of column headings in the Task Manager:

Code in Column 1	Table & Screen
JOBMGR_LCL_FILE_LIST	Local Files in File List
JOBMGR_RMT_FILE_LIST	Remote Files in File List
JOBMGR_ERR_FILE_LIST	Errors (displayed in the "Remote Files" area)
JOBMGR_BATCH_LOG	Upper portion of Batch Log
JOBMGR_BATCH_DETAIL	Lower portion of Batch Log
JOBMGR_ERR_BATCH_LOG	Errors (displayed in upper portion of Batch Log)
JOBMGR_BATCH_QUE	Batch Queue
JOBMGR_ERR_BATCH_QUE	Errors (displayed in the Batch Queue area)
JOBMGR_SETUP_TARGETS	Upper portion of Print ID Setup screen
JOBMGR_SETUP_LIBS	Lower portion of Print ID Setup screen

Column 2 is always L.

Column 3 is the text of the column heading that is displayed.

Column 4 is the column number (from left to right).

Column 5 is the percentage of the column's page width. The number must be 3 digits. For numbers less than 100, enter leading zeros, for example, 025. You may remove a column heading from the table by entering 000.

Column 6 is the font as defined in the FONT.INI file on the PC.

Column 7 is the color as defined in the ALEPHCOM.INI file on the PC.

Columns 8 and 9 are not relevant to the Task Manager.

Column 10 is a note that is not displayed on-screen.

4 Sending Alerts

The system may be configured to send email alerts when a batch jobs finishes execution. This must be done by configuring the tab_alert table, found in each library's data_tab directory. Below is a description of the table:

Column 1 – The method in which the alert is sent. Currently only emails (E) are supported.

Column 2 – The information of the recipient of the alert. Currently only email addresses may be specified.

Column 3 – The type of task for which the alert should be sent to the specified recipient. It currently may be used to specify the job type. Enter **ALL** to specify all batch jobs.

Possible values are

CIRC,ACQ,CAT,ILL,INDEX,UNION,ITEMS,ADAM,STAFF,SYSTEM.

3- Distribution: the distributed example of the table is under xxx01/tab. Again it lacks examples of alerts for specific jobs (as opposed to ALL jobs).

```
!1                2                3                4
!-!!!!!!!!!!!!!!!!!!!!!!!!!!!!!!!!!!!!!!!!!!!!!!!!!!!!!!!!!!!!!!!!!!!!!!!!!!!!!!!!!!!!!!!!!!!!!!!!!!!!!!!!!!!!!!!!!!!!!!!!
E yoel.kortick@exlibrisgroup.com          ALL          859_8_TO_UTF
E yoel2091@yahoo.com                    ALL          8859_8_TO_UTF
!* E yoel.kortick@exlibris.co.il          ALL
```

Column 4 – The encoding which is used when sending out the email.