

## 3<sup>rd</sup> PARTY INTEGRATIONS AND DISCOVERY

Exporting records, maintaining a discovery system, basic troubleshooting

LAURA JACOBS | FUNCTIONAL SUPPORT ANALYST  
AMY ROOD | TEAM LEAD

**ExLibris**  
a ProQuest Company

### Introductions

- Laura Jacobs
- Amy Rood

## About This Session and Target Audience

- This session aims to inform users already using discovery and 3<sup>rd</sup> party integrations (Primo, Summon, EDS) and to assist with setup for those interested in using discovery systems.
- Session Objectives
  - By the end of this sessions you will know, understand and/or be able to:
    - A) Find resources to set up and troubleshoot Primo
    - B) Export record sets for Summon, EDS, and other discovery systems
    - C) More fully understand RTA
- Session Target Audience:
  - Primo, Summon, EDS customers
  - Systems, cataloging, reference librarians
  - Those interested in purchasing a discovery layer and are researching

## Voy-Primo: Setup



## Extracting Data from Voyager, Importing into Primo

- All of the identified bibliographic records are initially exported from Voyager
  - Suppressed records can be excluded
  - Records modified in identified locations can be excluded
  - Records modified by identified operators can be excluded
- Configure PrimoExp-Publishing.ini

```
# Configuration for Voyager Export for Primo -- Publishing
# Voyager status maps to (A)available or (U)navailable for Primo
[Item Statuses]
Not Charged=A
Charged=U
Renewed=U
Overdue=U
Recall Request=U
...
[Excluded Operator Ids]
# Items whose most recent activity was recorded by one of these operators will not
be
exported.
[LocationCodesForBibInclusion]
# If any location codes are listed here, only bib records that are linked to
# holdings at the specified locations will be included in the extract.
```

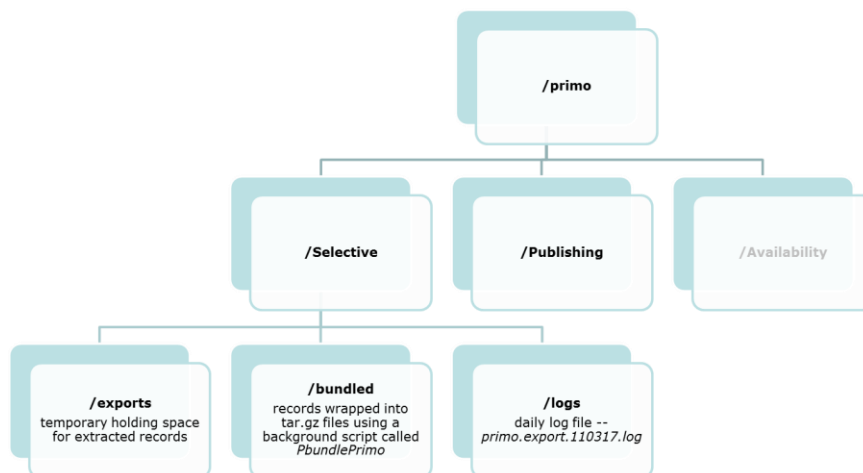
## Selective and Publishing extracts

	Frequency	Changed Since	Headings Change	Export using**
<b>Selective</b>	On Demand	N	N	BibRange or BibsFromFile
<b>Publishing</b>	Daily	Y	Y	ChangedSince

## Pipes and Harvesting (probably not the kinds you're thinking)

- Pipes bring information from Voyager to Primo
  - Publishing pipe
    - Brings bibliographic information from Voyager bibs to Primo for display
  - Availability pipe
    - Brings availability information and changes from holdings from Voyager to Primo
  - Selective pipe
    - Brings back select bib information to Primo after the initial harvest
- /m1/voyager/yyydb/ini
  - PrimoExp-Publishing.ini
  - PrimoExp-Availability.ini
  - PrimoExp-Selective.ini
- Schedule pipes to run at convenient times
  - You know your system: how often will they run? How often do you update bibliographic records? Add new records? How many? How many transactions are occurring daily?

## Primo directories on the Voyager server



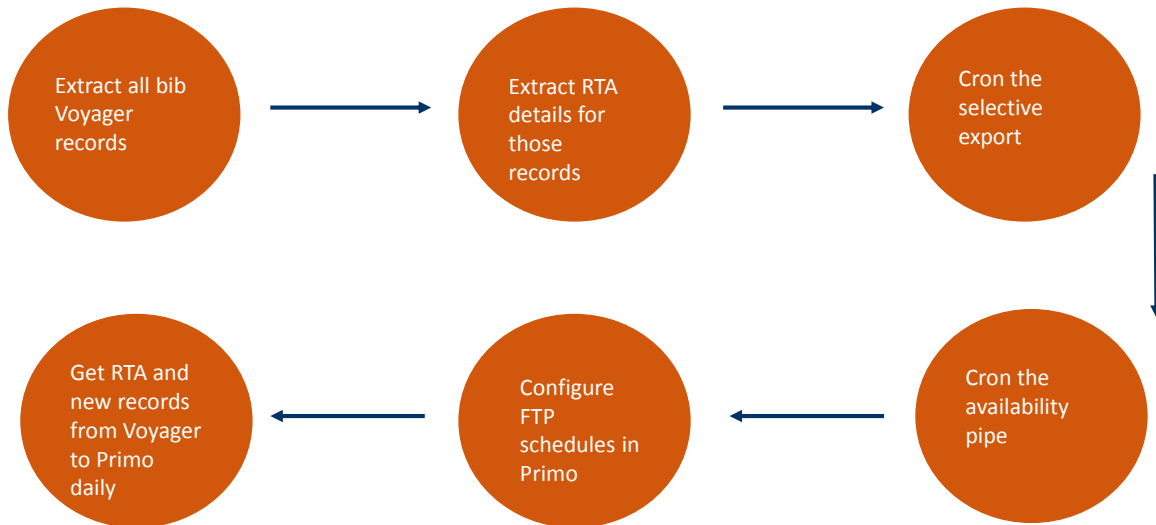
## Normalization

- Primo uses FTP to harvest records from Voyager to Primo
  - Normalized for use in Primo by Pprimoexp: Primo Normalized XML (PNX) records

## Pprimoexp Batch job

- What does this job do?
  - Creates the XML files to conform to the Open Archives Initiative Protocol
  - Runs the PbundlePrimo script that bundles individual records into tar.gz files
  - Cleans up the exports directory
- RequiredBib (-R)
  - Specify one or more record IDs
- File path (-f)
  - Directs to the ini file
- Threads4Range
  - -T to specify a number of threads/extract processes to run
- Scheduling
  - Voyager scheduling allows for different production jobs to run at different times during the day
    - Run the publishing job once per day
    - Run the availability job every hour
  - Primo FTP jobs are scheduled on the Primo side, ie how often the data from Voyager is brought into the discovery layer

## Basic Workflow:



## Course Reserves



## Course Reserves Overview

- Facets and search scopes in Primo can allow course reserves searching in discovery
- Extracted Voyager records are enriched with course reserve information
  - Course number, course name, instructor name/title, effective date, department name, etc.
- In the relevant PrimoExp<xxx>.ini:
  - CourseReserves=Y
    - 952 tag in the [Enrichment Tags] stanza
- ITEM.on\_reserve
  - If flag is set to Y in the item record, every attached course reserve list will be linked
    - When a ChangeSince= value is specified, RESERVE\_ITEM\_HISTORY is consulted to determine if reserve data should be extracted

## InsertCRTag=952 Enrichment Tag

- Assumes you're not currently using the 952 locally
  - 952a: Reserve list name
  - 952b: list effective date
  - 952c: list expiration date
  - 952d: List location display name
  - Etc
- PprimoExp looks first at the ini: Course Reserves=Y?
  - Does one of the bib's items include an entry in RESERVE\_ITEM\_HISTORY for timeframe?
  - ITEM.on\_reserve=Y
  - Generate the bib with 952 fields

## Course Reserves E-Items

- Voyager item type specifically created for course reserves
  - Eitems exist only in the context of course reserves
  - Optionally are attached to bibs
- What Pprimoexp is looking for:
  - Status of e-items
  - Attachment to effective courses
  - ChangedSince=
    - Deleted eitems
    - Changed/edited eitems
    - Reserve list changes

## InsertEIMTag=954 Enrichment Tag

- Included in the [Enrichment Tags} stanza of the .ini
  - 945a: Code supplied as a parameter to the job
  - 945b: Display name of the Voyager owning library of the bibliographic record
  - 945c: Display name of the Voyager location from the MFHD
  - Etc.
- ExportEitemsWithCourseReserves=
  - Y or N
  - ChangedSince governs exported eitems
  - Only eitems between effective and expiration dates
  - Qualifying linked bib records will also be imported
- IncludeEItemSuppressedBibs=
- IncludeReserveListEitemsSuppressedBibs=





## Real-Time Availability

### RTA

- Dynamically generated from Voyager availability information
  - Primo sends a request to Voyager ILS
    - Contains an operation parameter from publish\_avail
    - A doc\_num parameter with bib record numbers
  - Voyager availability service (VXWS) processes the request
    - Uses PrimoExp.ini config
  - Returned bib record information from the Voyager database in XML with enrichment tags showing availability, course reserves status, etc

## Common RTA errors

- Missing bibliographic record ID number (doc\_num) in the URL request
  - <error>doc\_num must be included in parameters</error>
- URL request contains an operation parameter other than publish\_avail
  - <error>Unrecognized op</error>
- Requested bibliographic record ID number does not exist in the Voyager database
  - <error\_message>Error reading document</error\_message>



## OPAC via Primo (OvP)

## Patron Directory Services (PDS)

- Doesn't have a patron database, but configures access on the fly
  - Passes credentials to designated target server or to an external authentication page
- PDS can send credentials to the Voyager server for verification
  - SSO (Single sign on) for Voyager, Primo, etc.
- LDAP, Shibboleth, etc can also be used
  - Primo must have:
    - Voyager patron ID (Institution\_id or patron\_barcode)
    - Voyager patron group ID
    - UBID, patron home database

## My Account in Primo

- What can it show?
  - Patron information
  - Option to renew charged items
  - Option to cancel requests
  - Option to update the patron PIN
  - Option to update the patron SMS
  - Display ILL requests

## Configuring OPAC Request Forms

- Default request forms:
  - Hold (default.HoldRequest)
  - Recall (default.Recall)
  - Call Slip (default.CallSlip)
  - UB (default.UBRequest)
- Additional request forms
  - Defined in the Primo Code Tables
  - <request code> needs to match the code name in the Voyager System Administration OPAC Configurations

## Configuration in Voyager for OPAC via Primo

- Primarily in the vxws.properties
  - /m1/voyager/xxxdb/tomcat/vxws/context/vxws/ui/eng
- You can configure:
  - Status text for display
  - Serial information
  - Order information
  - Skins
  - UB databases
  - Request group parameter
- Similar to configuring texts and options in the webvoyage.properties

## Serials in OvP

- Handled in vxws.properties
  - Uses 1020-1044 codes
  - serial.issue.1020.recent.basic=Y
  - serial.issue.1022.recent.supplement=Y
  - serial.issue.1024.recent.index=Y
  - serial.issue.1040.older.basic=Y
  - serial.issue.1042.older.supplement=Y
  - serial.issue.1044.older.index=Y
- 1030 handles the order status as shown in the PO

## Skins

- Some request types might not be allowed in OvP
  - Link embeds WebVoyage In the Primo interface
  - Specify the skin to be used



## EDS, Summon and beyond

### Voyager and non-ExLibris discovery

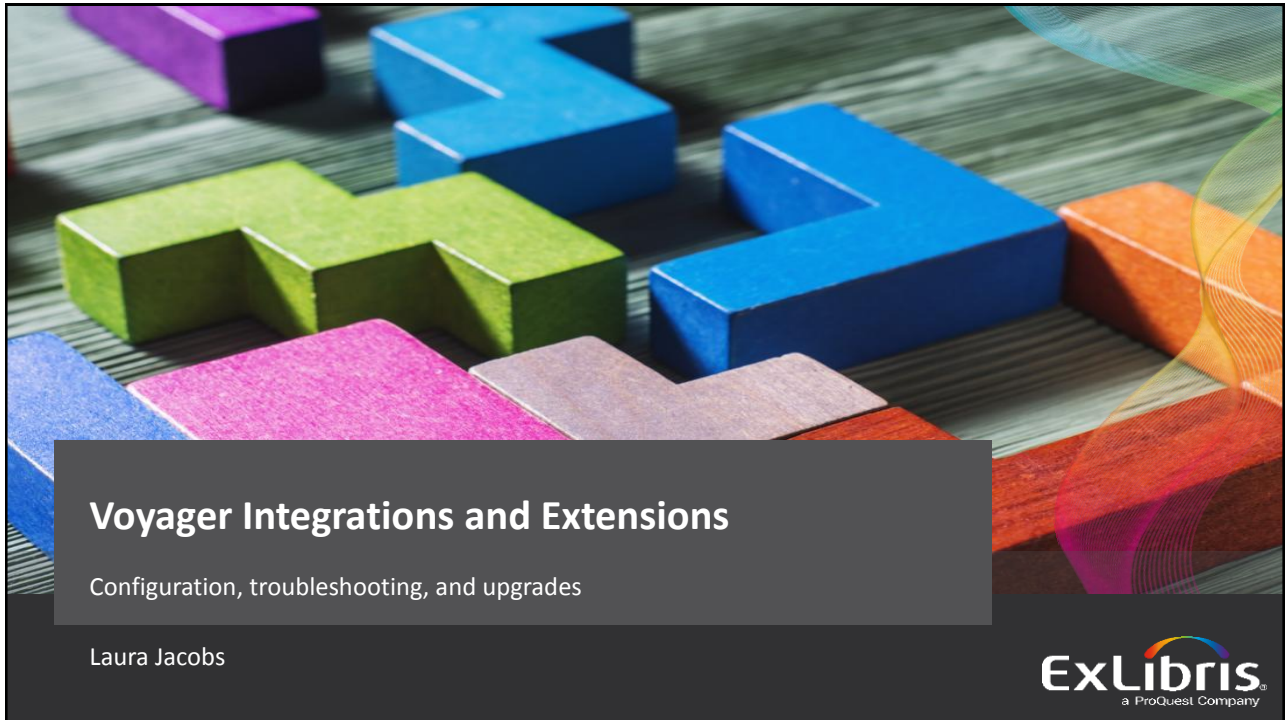
- Summon, EDS, and other proprietary discovery layers can be mostly configured with Voyager
- Exports and Z39.50 send information from Voyager to discovery, rather than the extract scripts that feed Primo
- Basic workflow for getting started remains the same: use Voyager utilities to export your database to discovery; use edited script parameters to parse out recent bibs and holdings

## Summon and Voyager

- Starts with a full export of your Voyager catalog:
  - [https://knowledge.exlibrisgroup.com/Voyager/Knowledge\\_Articles/How\\_to\\_export\\_all\\_bib\\_and\\_mfhd\\_records\\_in\\_database](https://knowledge.exlibrisgroup.com/Voyager/Knowledge_Articles/How_to_export_all_bib_and_mfhd_records_in_database)
- Daily cron-ed job to export records created within that day
  - Pmarcexport, using create data range
- Quarterly export of your full catalog if participating in the Summon index
  - 4-6 weeks of QA to become live on the Summon index

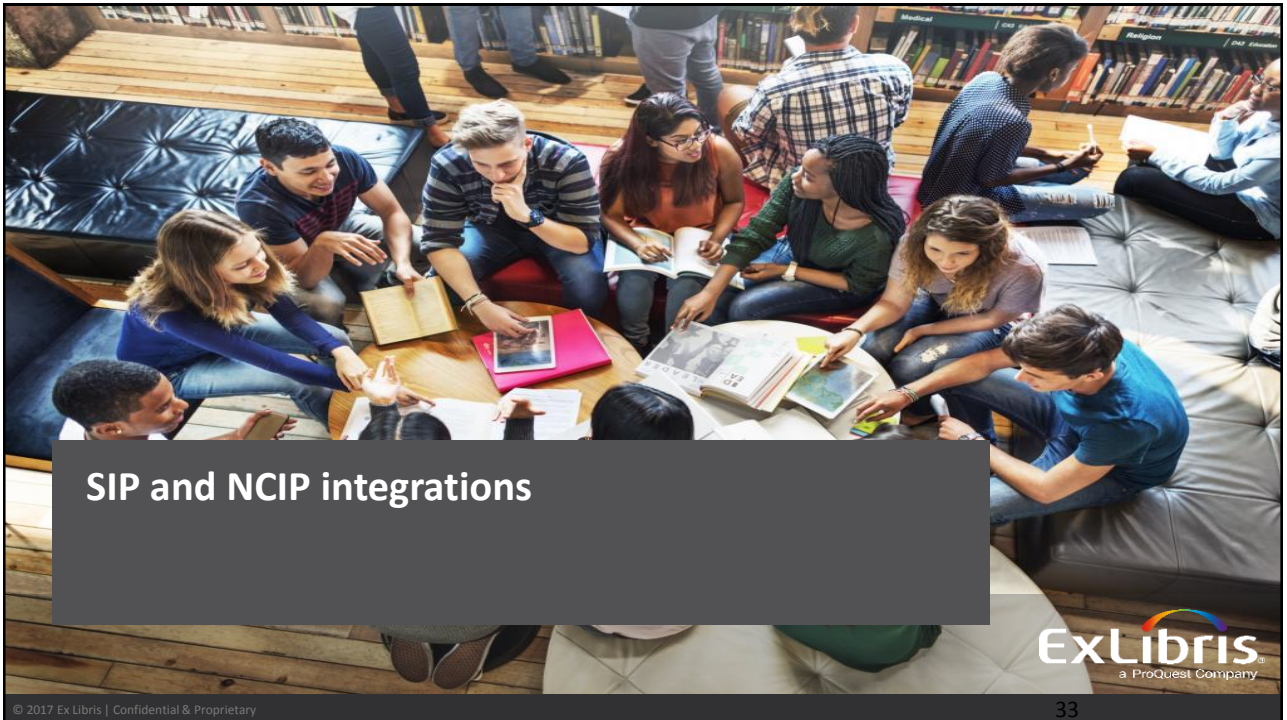
## Z39.50

- Some discovery layers might use Z39.50 to bring back availability information
  - [https://knowledge.exlibrisgroup.com/Voyager/Knowledge\\_Articles/How\\_do\\_other\\_sites\\_connect\\_via\\_Z39.50\\_to\\_our\\_database%3F](https://knowledge.exlibrisgroup.com/Voyager/Knowledge_Articles/How_do_other_sites_connect_via_Z39.50_to_our_database%3F)



- **Integration with third party SIP applications**
- **Integration with third party NCIP applications**
- **Integration with Primo and other discovery layers**
- **Voyager API**
- **Upgrading and third party integrations**
- **Upgrading and Primo and other discovery layers**





## SIP and NCIP integrations

ExLibris  
a ProQuest Company

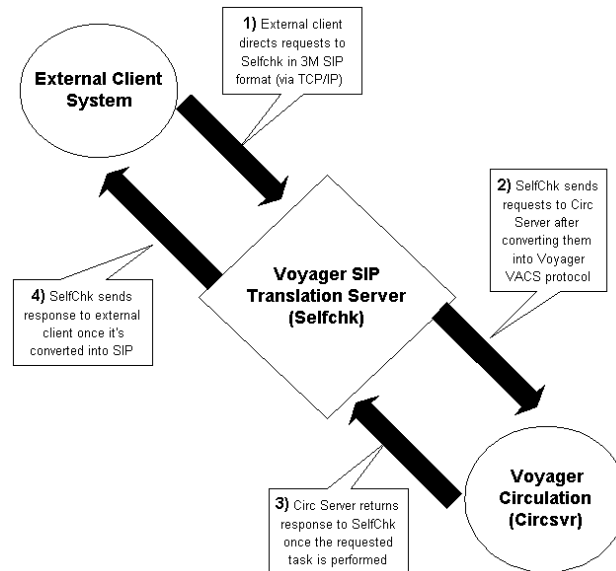
© 2017 Ex Libris | Confidential & Proprietary

33



- SIP2
- ESIP
- Self Check
- 3M SelfCheck

## Communication using Self Check

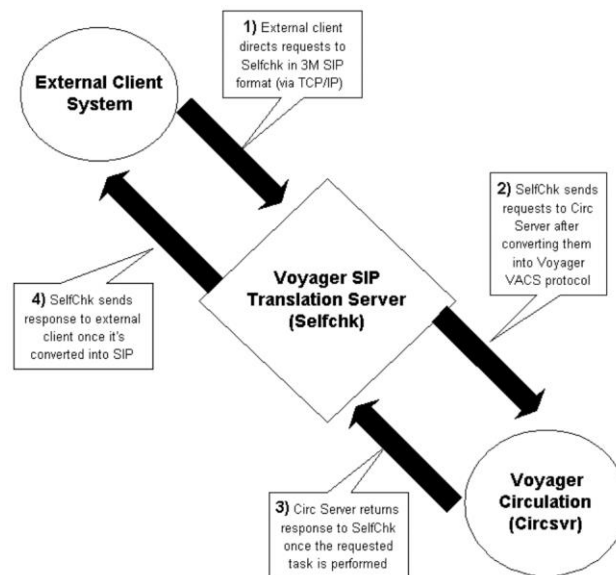


## Voyager Configuration for Self Check

### Voyager System Administration module setup

- Create a circulation desk location for SIP Self Check
- Create an operator profile for SIP Self Check
- Create a circulation security profile for SIP Self Check
- Associate the SIP Self Check operator profile with the circulation security profile
- Associate the SIP Self Check circulation location with the circulation security profile
- Associate the SIP Self Check circulation desk location with a circulation policy group, and define values for the location

## Troubleshooting Self Check



## Troubleshooting Self Check

- Login to Circulation using the Self Check Operator, Password, and Circulation Happening Location
- Are you able to perform the same tasks there?
- What connection information is used in the Self Check machine? Voyager server IP and port xx31?
- Can you telnet from the Self Check Machine to the Voyager server over port xx31?
- Is checksum/error checking turned off on the self check machine?
- Do logs in the self check machine show responses to messages?
- Is there a 93 message that matches your login information?
- A 94 message received in response?



Voyager InterCirc – NCIP  
NCIP  
URSA  
Relais  
OCLC Navigator

### NCIP Configuration considerations

- Operator ID to be used to record URSA, Relais ILL, or OCLC Navigator transactions in Voyager
- Type of patron validation required by your site (barcode or institution ID)
- Item type to be used for remote items borrowed by local (Voyager system) patrons
- Location where remote items are held locally (Voyager site)
- Location where remote items may be picked up by local patrons

## NCIP Configuration considerations

- Special system patron to be charged by Voyager Circulation with all local items lent to remote patrons
- Patron group and circulation policy with unlimited privileges for the special system patron
- Location where local items are charged to special system patron on behalf of the remote patron
- Location from which local items are mailed to remote libraries
- Common circulation policies
- Expected time in days it takes for a local item to be returned from the remote library
- Call Slip configuration that can be used to retrieve items requested by remote libraries

## NCIP Configuration considerations

- List of Circulation patron group codes for mapping in Relais ILL only
- OCLC composite index definition in SysAdmin > Search > Indexes > Composite definitions for OCLC Navigator only
- Configure intercirc-ursa.ini file for use with Relais or URSA
- Configure oclc-navigator.ini for use with OCLC Navigator.

## Troubleshooting NCIP configuration

- Test the login in Circulation to make sure you can make requests and charge items as the NCIP process does
- ReflectRequestDiagnostic=N
- Compare ini files with tml files to examine changes.
- /m1/voyager/xxxdb/tomcat/ncip/logs/ncip-traffic
- Must use TCP/IP



## vxws – Voyager Web Services and APIs

## VXWS

- APIs can be used to retrieve information from Voyager and update the database.
- Developer Network <https://developers.exlibrisgroup.com/>
- Access Valve
- Firewall should be open to xx14
- OvP – OPAC via Primo
- Xservice

## Q & A

**Any Questions?**







## Session Survey Evaluation

Please use the following link

<https://www.surveymonkey.com/r/techsem2017>

to provide feedback on your sessions.



THANK YOU