



campusM User Group Meeting

February 2018 | Sydney, Australia

Ido Peled, Corporate VP, Mobile Campus Solutions


ExLibris[®]
a ProQuest Company

AGENDA



Corporate



campusM



Community

AGENDA



Corporate



campusM



Community

THE VALUES WE BELIEVE IN



ADDRESSING YOUR NEEDS, SHAPING INSTITUTIONS' FUTURE

2008

2009

2010

2011

2012

2013

2014

2015

2016

2018

2018

Focus on library management
and discovery

Expanding to student engagement, teaching,
learning, and research

Primo

Alma

Leganto

Esploro

Summon

Rosetta

campusM

Cloud-based, unified library
services platform

Solutions for extending the
institution's reach and impact

2018 HIGHLIGHTS



Launched the **new Alma user interface**

>26 K
Library staff
using Alma



Key **personalization** and **analytics** enhancements

>2 M
Active
students



Integrated **Summon with Alma**

>60
New
customers



New **copyright, digitization** and **purchasing** flows

>11 K
Live course
reading lists



Enhanced collection **coverage and metadata**

>30%
Increase in
searches vs. 2016



Two **new datacenters** established (Canada & China)

>7,000
Institutions in
the Ex Libris
cloud



Extended workflows of Rosetta-Alma-Primo

>1000 TB
Preserved
by Rosetta



Aligned **knowledgebase** experience across products

>200
Ideas on the
Idea Exchange

2018 KEY FOCUS AREAS



Library management

Smart analysis, collaboration, and recommendations



Discovery

Enhanced exploration services using big data



Research

New research services platform



Mobile campus

Increased focus on student retention & engagement



Teaching & Learning

Extended reading list personalization & insights



Services

Global professional services, new learning portal



Ex Libris-ProQuest

Enhanced integration workflows

COLLABORATING WITH THE COMMUNITY



 Industry Expertise

 Software Expertise

 Integration Synergies

 Infrastructure

 Supporting Platforms



Knowledge & Experience 

Product Extensions 

Product Feedback 

Industry Advocacy 

Institutions' Voice 




Idea Exchange


Developer Network


Collaborative Testing


Product Working Groups


Focus & Special Interest Groups

AGENDA



Corporate



campusM



Community

CAMPUSM 2017 HIGHLIGHTS



Released Homescreen personalization



Started transitioning to Oracle Business Intelligence



Delivered a record number of implementation projects and go-live



Increased scope and number of system integrations



Introduced several new knowledge and collaboration platforms



Removed any start of term bottlenecks and issues



Rolled out performance and cloud monitoring tools



Realigned business unit structure to meet growth

GEARED FOR GROWTH

Product




Development




Services




Customer
Focused


Expert
Domains

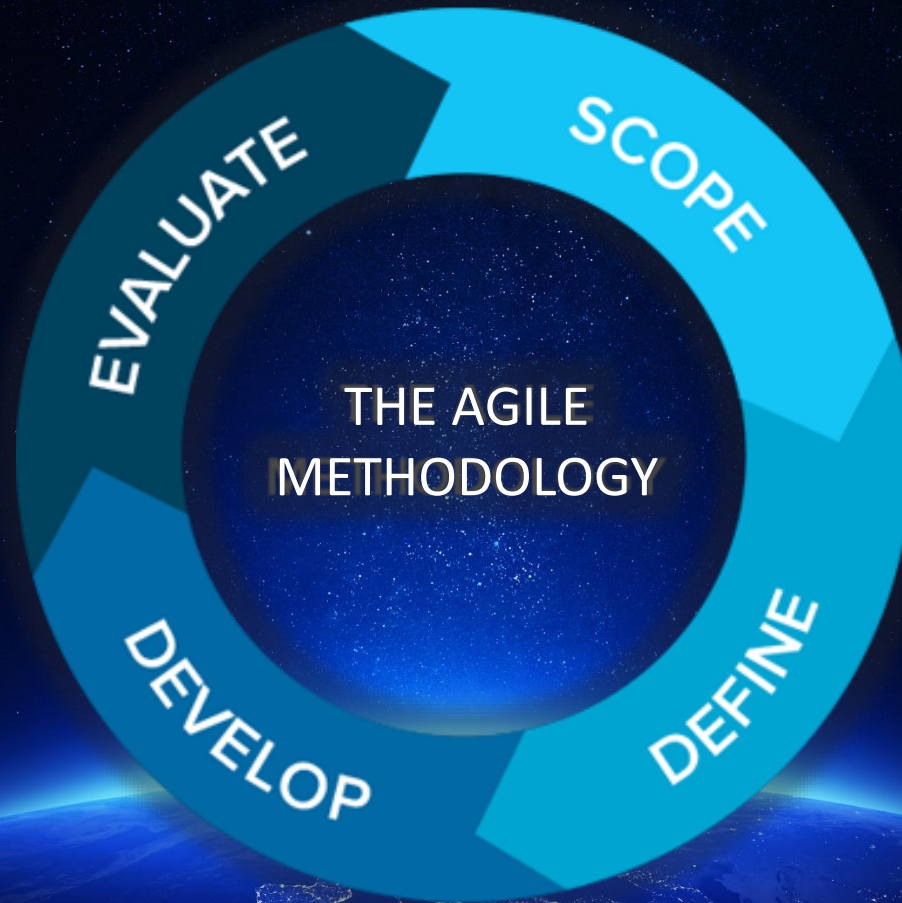

Clear
Goals

GEARED FOR GROWTH



CLOUD | 24x7 HUB | IT | PM

CONTINUOUS INNOVATION



CONTINUOUS INNOVATION

January 2018

Please Note: All customers beta/dev apps (to be referred to as Sandbox Apps going forward), will be moved to the latest version on the 11th December 2017 as part of campusM's move to Monthly Releases. Hockey App builds for the native apps will be made available during the week commencing 11th December 2017



Development

Enabled location-based ordering of...
be moved to the top of the available

This will enhance end users' ability to

BETA: Enhanced the Oracle Business
the existing Insight data structures.

Please review <https://knowledge.ex>

February 2018



Note All customers beta/dev apps (referred to as Sandbox Apps going forward) will be moved to the latest version on the 15th January 2018 as part of campusM's move to Monthly Releases. Hockey App builds for the native apps will be made available during the week commencing 15th January 2018. This version will be available to deploy to live from the 5th February 2018.

New Features

Enabling Google M

Given the differing levels of detail and
campusM iOS App, allowing institutio

For the institution:

March 2018



Page summary display: overview and page thumbnail

Note All sandbox apps (also known as customer beta apps or dev apps) will be moved to the latest version on February 19, 2018 as part of campusM's monthly release. Hockey app builds for native apps will be made available during the week of February 19, 2018. This version will be available to deploy to live from March 5, 2018.

New Features

App Builder: Roles in Alphabetical Order ideaexchange

Coming from Ideas Exchange: In the App Builder, roles now appear sorted as follows: uppercase sorted alphabetically, followed by lowercase sorted alphabetically.

App Manager App Builder

Jon campusM

CLEAR VISION



User Experience



App Manager



Extensions



Integrations



Insights



Infrastructure

CLOUD MONITORING

EU01(WARN_20_OVER_5) found 48 running over 5 sec - Message (HTML)

Tue 14/11/2017 2:05 PM
 CampusM-Dev-Monitor@exlibrisgroup.com
 EU01(WARN_20_OVER_5) found 48 running over 5 sec

To: CampusM Development – OnCall;
 Please treat this as Confidential.

mod_status.zip
 173 KB

PID	Duration (Sec)	AppServer	Client	Request	Operation	Parent OrgCode	Org Code	Org Des	App Name	AEK Desc
29954	410	app0103.prod.cam.dc03.hosted.exlibrisgroup.com	146.227.0.34	POST /c/s/11876? omb_native_request=yes&omb_return_type=xml&omb	ALERT	890	891	DMU	MyDMU	Blackboard
14679	144	app0111.prod.cam.dc03.hosted.exlibrisgroup.com	148.88.244.129	POST /axis2v3/services/CampusMService/cachedMapPosition HTTP/1.1	ALERT	-	-	-	-	-
25352	109	app0105.prod.cam.dc03.hosted.exlibrisgroup.com	194.167.235.219	POST /notifications/CampusM/alertgroup/ HTTP/1.1	ALERT	-	-	-	-	-
29882	109	app0107.prod.cam.dc03.hosted.exlibrisgroup.com	82.132.228.179	POST /axis2v3/services/CampusMService/startup HTTP/1.1	ALERT	-	-	-	-	-
14467	107	app0110.prod.cam.dc03.hosted.exlibrisgroup.com	159.92.238.52	POST /axis2v3/services/CampusMService/startup HTTP/1.1	ALERT	-	-	-	-	-
23328	105	app0106.prod.cam.dc03.hosted.exlibrisgroup.com	82.132.223.95	GET /assets/MiddlesexUniversity/Middlesex/Images/Welcomes-plus/S	ALERT	-	-	-	-	-
25681	90	app0105.prod.cam.dc03.hosted.exlibrisgroup.com	148.88.244.90	POST /axis2v3/services/CampusMService/startup HTTP/1.1	ALERT	-	-	-	-	-
21721	83	app0109.prod.cam.dc03.hosted.exlibrisgroup.com	94.197.120.181	GET //r/1510668167/r/1510668151/c/s/11876? course_name=Business+s	ALERT	890	891	DMU	MyDMU	Blackboard
21475	83	app0109.prod.cam.dc03.hosted.exlibrisgroup.com	94.197.120.181	GET //r/1510668167/r/1510668151/c/s/11876? course_name=Business+s	ALERT	890	891	DMU	MyDMU	Blackboard
21507	83	app0109.prod.cam.dc03.hosted.exlibrisgroup.com	178.97.168.8	POST /c/s/4002? omb_native_request=yes&omb_return_type=xml&omb	ALERT	126	127	University of Derby	University of Derby	Exams Timetable
20999	83	app0109.prod.cam.dc03.hosted.exlibrisgroup.com	94.197.120.181	GET //r/1510668167/r/1510668151/c/s/11876? course_name=Business+s	ALERT	890	891	DMU	MyDMU	Blackboard
12935	82	app0111.prod.cam.dc03.hosted.exlibrisgroup.com	82.39.61.194	POST /axis2v3/services/CampusMService/cachedPocketGuide HTTP/1.1	ALERT	-	-	-	-	-
19852	80	app0109.prod.cam.dc03.hosted.exlibrisgroup.com	94.197.120.181	GET //r/1510668167/r/1510668151/c/s/11876? course_name=Business+s	ALERT	890	891	DMU	MyDMU	Blackboard

CONNECT LAYER MONITORING

Failure in campusm connect layer servers! - Message (HTML)

File Message Tell me what you want to do...

Ignore Delete Reply Reply All Forward Meeting IM More Derby University To Manager Team Email Done Reply & Delete Create New Move OneNote Mark Unread Categorize Translate Find Related Select Zoom

Delete Respond Quick Steps Move Tags Editing Zoom

Fri 23/02/2018 10:02 PM
CampusM-Dev-Monitor@exlibrisgroup.com
Failure in campusm connect layer servers!

To CampusM Development ? OnCall; David Zyroff; Elad Aharoni; Hannan AbuNamous; Ido Peled
Please treat this as Confidential.

Total of 30 events in the last 2 hour/s have triggered an alert. (23/02/2018 11:02:07):

Date/Time	Org	URL	WSDL URL	Server Description	Error
23/02/2018 09:59:12	Keele	https://campusm.keele.ac.uk	https://campusm.keele.ac.uk/keele/services/CampusMUniversityService?wsdl	LIVE	connect timed out
23/02/2018 10:01:22	Keele	https://campusm.keele.ac.uk	https://campusm.keele.ac.uk/keele/services/CampusMUniversityService?wsdl	LIVE	connect timed out
23/02/2018 10:03:32	Keele	https://campusm.keele.ac.uk	https://campusm.keele.ac.uk/keele/services/CampusMUniversityService?wsdl	LIVE	connect timed out
23/02/2018 10:05:43	Keele	https://campusm.keele.ac.uk	https://campusm.keele.ac.uk/keele/services/CampusMUniversityService?wsdl	LIVE	connect timed out
23/02/2018 10:07:53	Keele	https://campusm.keele.ac.uk	https://campusm.keele.ac.uk/keele/services/CampusMUniversityService?wsdl	LIVE	connect timed out
23/02/2018 10:10:03	Keele	https://campusm.keele.ac.uk	https://campusm.keele.ac.uk/keele/services/CampusMUniversityService?wsdl	LIVE	connect timed out
23/02/2018 10:12:13	Keele	https://campusm.keele.ac.uk	https://campusm.keele.ac.uk/keele/services/CampusMUniversityService?wsdl	LIVE	connect timed out
23/02/2018 10:14:23	Keele	https://campusm.keele.ac.uk	https://campusm.keele.ac.uk/keele/services/CampusMUniversityService?wsdl	LIVE	connect timed out
23/02/2018 10:16:34	Keele	https://campusm.keele.ac.uk	https://campusm.keele.ac.uk/keele/services/CampusMUniversityService?wsdl	LIVE	connect timed out
23/02/2018 10:18:44	Keele	https://campusm.keele.ac.uk	https://campusm.keele.ac.uk/keele/services/CampusMUniversityService?wsdl	LIVE	connect timed out
23/02/2018 10:20:54	Keele	https://campusm.keele.ac.uk	https://campusm.keele.ac.uk/keele/services/CampusMUniversityService?wsdl	LIVE	connect timed out
23/02/2018 10:23:04	Keele	https://campusm.keele.ac.uk	https://campusm.keele.ac.uk/keele/services/CampusMUniversityService?wsdl	LIVE	connect timed out
23/02/2018 10:25:14	Keele	https://campusm.keele.ac.uk	https://campusm.keele.ac.uk/keele/services/CampusMUniversityService?wsdl	LIVE	connect timed out
23/02/2018 10:27:24	Keele	https://campusm.keele.ac.uk	https://campusm.keele.ac.uk/keele/services/CampusMUniversityService?wsdl	LIVE	connect timed out

AGENDA



Corporate



campusM



Community

COMMUNITY ENGAGEMENTS OWNER



Matt Sherlock

matthew.Sherlock@exlibrisgroup.com

Product Director (campusM)

Assistant Director (Learning Environments)
– University of Birmingham

Assistant Director (Project)

Project Team Leader

Bachelor of Science (BSc) Chemistry with
Analytical Science

Ceramic artist and Wood Turner

COMMUNITY ENGAGEMENTS



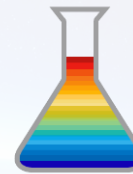
Enabling direct communication channels between institutions as well as Ex Libris on general and specific topics



Providing campusM and corporate materials on an open platform to support more self-service activities



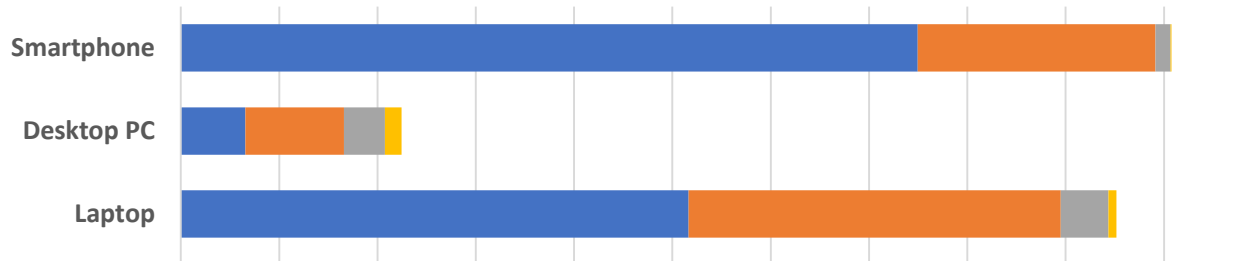
Creating a community-brainstorming to influence the roadmap and future developments



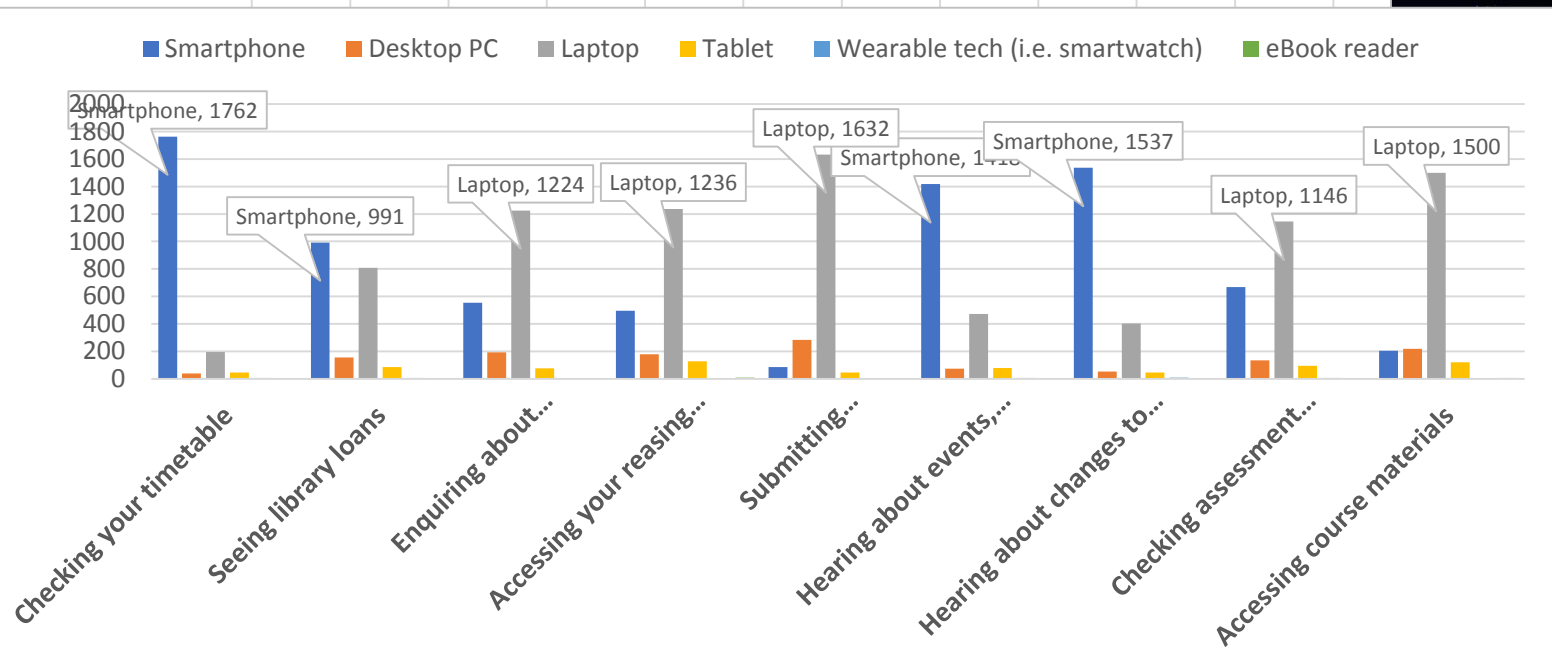
Sharing technical documentation and an open repository to share Ex Libris and customer developments

ANNUAL STUDENT DIGITAL LIVES SURVEY

■ I couldn't live without it ■ I use it, but don't rely on it ■ I could stop using it and wouldn't notice ■ I don't use it currently



Wearable te



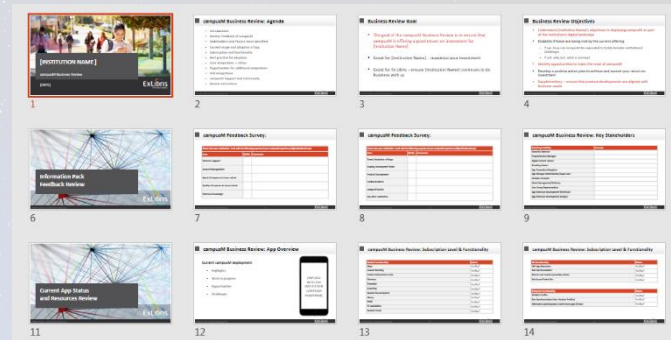
PLANNED NEW INITIATIVES

Institutional Dashboard



Overview of your campusM app usage including product usage, App Manger usage, utilization guides and more.

Business Review



Regularly scheduled meeting to review product alignment to institutional goals and initiatives.

THANK YOU!

Ido.peled@exlibrisgroup.com

+972 (528) 569-759


ExLibris[®]
a ProQuest Company