



ExLibris
Alma



Alma Roadmap Highlights

2019 H2 – H1 2021

ExLibris[®]
a ProQuest Company

Proprietary Information

- The information provided in this presentation gives a high level view of Alma's planned future roadmap and functional offerings. The information in this document is proprietary to Ex Libris.
- Neither this document nor its contents can be forwarded to a third-party without the expressed written permission from Ex Libris.
- The content in this document is informational, and may be subject to change without prior notice at the sole discretion of Ex Libris.



Alma Roadmap Highlights



METADATA & RES. MNG.

- Improved Metadata Editor UX & Workflows – Record Editing
- Physical Item Editing Workflow Improvements
- My Electronic Resources by Provider
- Improved Metadata Editor UX & Workflows – Templates and Rules
- Linked Data – uploading, managing relationships and publishing (e.g. BIBFRAME)
- Community Zone Bibliographic Records – Local Extensions
- CZ Contribution Enhancements
- Metadata Editor – Advanced Features
- Linked Data - Basic Record Editing (e.g. BIBFRAME)
- Improvements to Electronic Activation Task List



ACQUISITIONS

- COUNTER – Support the COUNTER 5 – Auto reports & Manual uploads
- Claims Task List Improvements
- Additional Claim Options
- SUSHI Improvements
- Audit Retention Management
- Acquisition Network – Task Lists
- Enhancements in PO Line Workflows
- Improved indexing and faceting
- Improved License management

H2 2019

H1 2020

H2 2020 – H1 2021



Alma Roadmap Highlights



LOCALIZATION

- | | | |
|---|---|---|
| <ul style="list-style-type: none">• Support DANMARC Crosswalk in MD Import• Manage Authoritative Authority Files in your Institution Zone & Open it for contribution | <ul style="list-style-type: none">• CZ Level Sets• Japan - Integration with NACSIS-CAT Catalog | <ul style="list-style-type: none">• Japan - Integration with NACSIS-CAT ILL• Batch Conversion Between Different MARC Formats• Z39.50 for Locally Managed Authorities• Enhanced SRU/SRW Support – Advanced BIB Update Options |
|---|---|---|



DIGITAL RESOURCES

- | | | |
|--|--|---|
| <ul style="list-style-type: none">• MODS Metadata Standard• ETD Metadata Standard• Publishing to Google Scholar• Migration tools – DigiTool Complex Objects | <ul style="list-style-type: none">• Customizable Delivery• Migration tools from Dspace, ContentDM etc.• Advanced digital discovery | <ul style="list-style-type: none">• Data Safeguarding• Advanced Full-text Search• Exhibition view |
|--|--|---|

H2 2019

H1 2020

H2 2020-H1 2021



Alma Roadmap Highlights



RESOURCE SHARING

- Enhanced broker integrations
- Patron ID automatic identification Rules
- Enhancement document delivery workflow

- Hybrid rotas
- Enhanced integration with Alma Acquisitions
- Copyright management

- Support for InnReach APIS
- Harvesting external resource for resource sharing
- Document delivery platform for non Alma partners
- Article Galaxy support



FULFILLMENT

- Booking management options
- Smarter fulfillment
- Reshelving time
- Delayed emails

- RFID support for reading multiple items
- Queue triggered purchase requests
- Multiple item recall

- Real Time Calculation of Lost Item Cost
- Sound Alerts at Circulation Desks
- Real time Pushing of User Data in Fulfillment Network
- Proxy Mode

H2 2019

H1 2020

H2 2020 - 2021



Alma Roadmap Highlights



ANALYTICS

- PO Lines with No Transactions
- Purchase Requests
- Improved Cost Per Use Information
- New fund transactions measures
- Advanced reporting on OCLC fields
- Analytics objects Role Profiles
- New Analytics Platform
- Enhanced bibliographic details
- API Usage



APIS AND OPEN PLATFORM

- Interested User in New Order API
- API to update Location
- OpenID Connect Authentication
- Match method in BIB and AUT API
- API for Invoice Create and Update
- On-platform apps
- Export in BIBFRAME
- API for Purchase Requests
- API for POLs with no inventory

H2 2019

H1 2020

H2 2020 – H1 2021



Alma Roadmap Highlights



USER EXPERIENCE

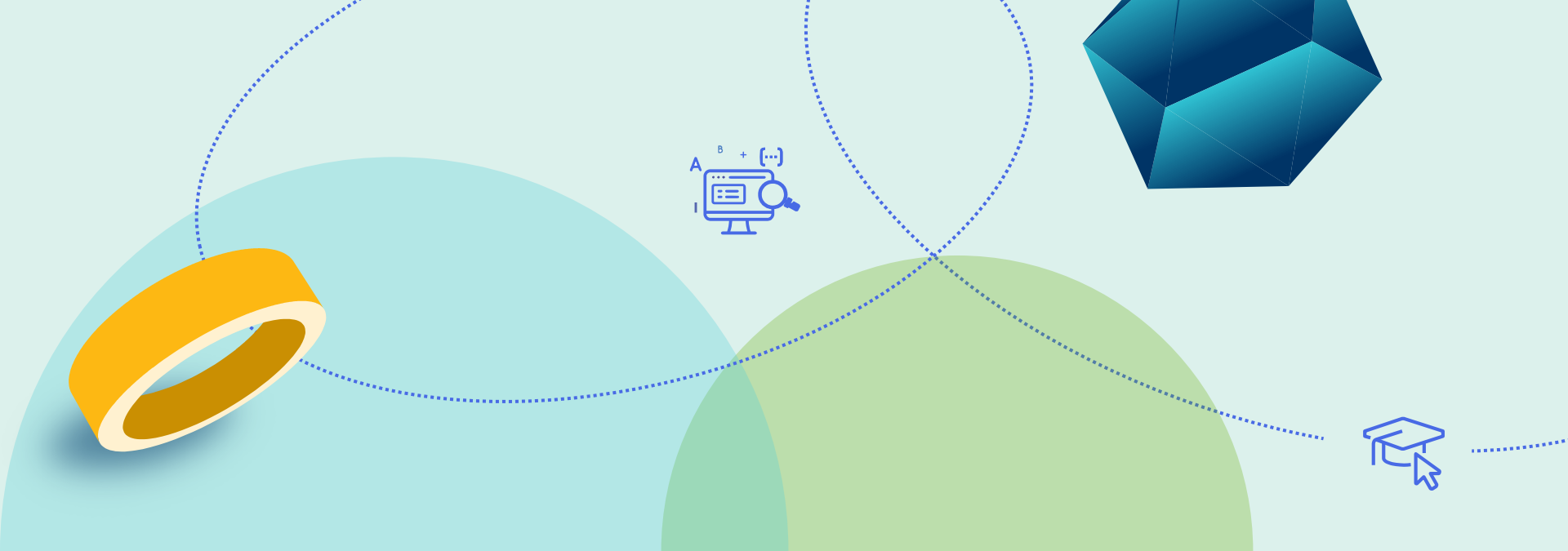
- | | | |
|--|---|---|
| <ul style="list-style-type: none">• My Activity Center – Recent Entities | <ul style="list-style-type: none">• Main Menu improvement• Facet Multi Selection and Exclusion | <ul style="list-style-type: none">• Configuration improvement• Accessibility level AA (WCGA 2.1)• Entities Tags |
|--|---|---|

H2 2019

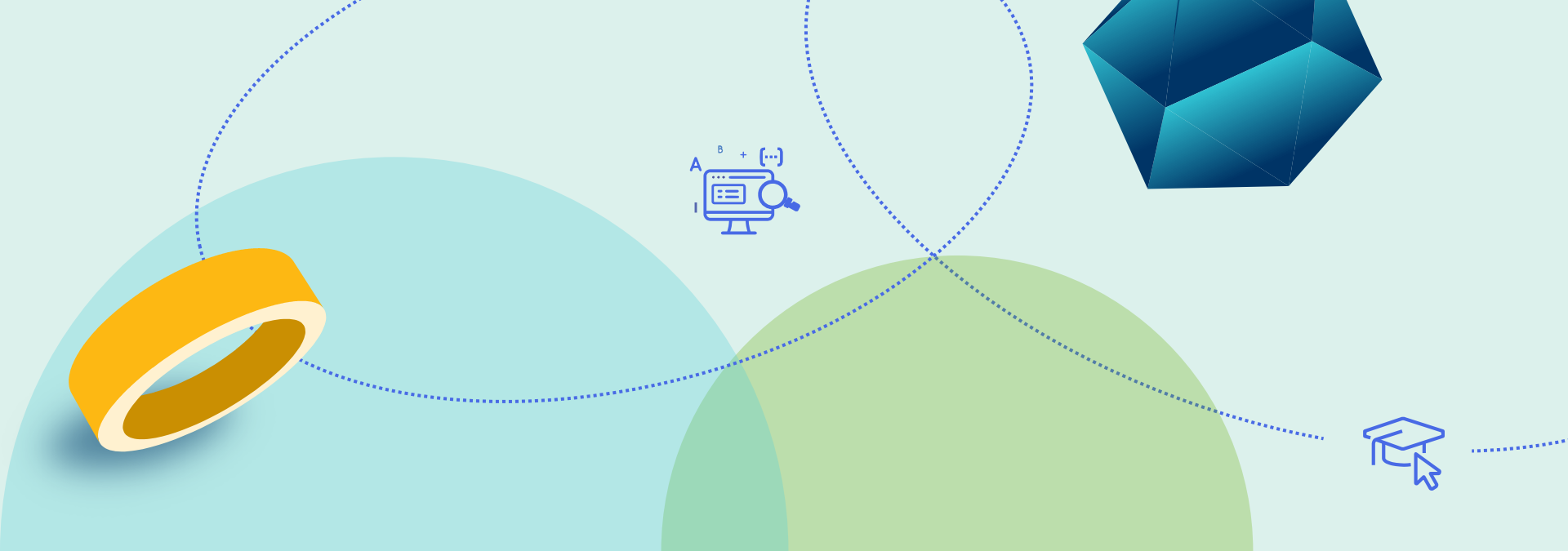
H1 2020

H2 2020 – H1 2021

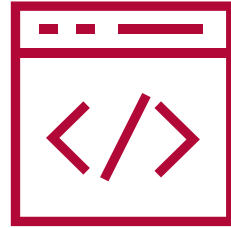




Roadmap Highlights – Detail



Roadmap Highlights – H2 2019



METADATA & RESOURCE MANAGEMENT



Improved Metadata Editor UX & Workflows - Record Editing



METADATA & RES. MNG.



Customer
Value

- The cataloger will be able to perform cataloging tasks in an efficient and easy way.



Feature
Highlights

- Easy to use navigation tree with all the relevant actions.
- Main menu organized by entities and aligned with the navigation tree.
- Consistent split screen behavior with better workflows.
- Improved inline editing.



Improved Metadata Editor UX & Workflows - Record Editing



METADATA & RES. MNG.



Customer
Value

- The cataloger will be able to perform cataloging tasks in an efficient and easy way.



Feature
Highlights

- Easy to use navigation tree with all the relevant actions.
- Main menu organized by entities and aligned with the navigation tree.
- Consistent split screen behavior with better workflows.
- Improved inline editing.



Physical Item Editing Workflow Improvements



METADATA & RES. MNG.



Customer Value

- The user will be able to add new items in an easier way.
- The user will be able to perform the same updates across lists of items.



Feature Highlights

- Ability to add a new item based on defaults or existing items.
- Ability to update a list of items with the same change in a single action.



My Electronic Resources by Provider



METADATA & RES. MNG.



Customer Value

Easily view your subscriptions with a provider and their availability status in Alma. Ensure that the resources which have been purchased from the provider have been activated.



Feature Highlights

- View the list of collections that you subscribe per provider
- Easily activate any collection that you subscribe to but have not been activated.
- Initially will provide your subscriptions status with ProQuest; will be expanded to additional providers, based on their ability to provide the subscription information per customer.





ACQUISITIONS



COUNTER – Support the COUNTER 5 – Auto Reports & Manual Uploads



ACQUISITIONS



Customer Value

- Supporting COUNTER 5 ensures that vendors and publishers can provide Alma customers with consistent, credible and comparable usage data.
- Focused on improving the clarity, consistency and comparability of usage reporting



Feature Highlights

- Designed to balance changing reporting needs with the need for simplification, so that all content providers can achieve compliance and Alma users can have usage statistics that are credible, consistent, and comparable.
- New usage types will help users to collect and analyze the information they need more easily.



Claims Task List Improvements



ACQUISITIONS



Customer Value

- Staff will benefit from access to more finely-tuned information when viewing the list of claimed items.
- Notifications to vendors will be easier to track by having one notice sent each time to each vendor



Feature Highlights

- View the list of claimed items from the claims task list.
- Aggregated claim letters to vendors, listing all of the claimed orders in one notification.



Additional Claim Options



ACQUISITIONS



Customer Value

- Overdue orders will be better tracked, by having the system resend additional claim letters for orders that are still overdue.
- Full automation of the claim process will improve the arrival rate of ordered items, without requiring staff time and engagement.



Feature Highlights

- Serial items will be claimed based on the issues' predicted expected arrival date, regardless of whether claims have already been sent for other issues.
- It will be possible to resend additional claim letters if an order is overdue and time has passed since the previous claim was sent.





LOCALIZATION



Support DANMARC Crosswalk in MD Import



LOCALIZATION



Customer Value

- Better support for Danish libraries.
- Libraries will be able to utilize resources and systems that provide records in DANMARC format.



Feature Highlights

- Alma's MD Import profile will be enhanced to include DANMARC as a source format.
- A system crosswalk will convert DANMARC to MARC21.



Manage Authoritative Authority Files in your Institution Zone & Open it for contribution



LOCALIZATION



Customer Value

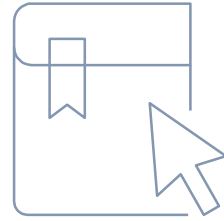
- Libraries who serve as the authoritative source for an authority file will be able to manage Authority files within their Alma institution Zone, other libraries will be able to contribute to it



Feature Highlights

- Libraries who serve as the authoritative source for an authority file will manage the authority file in their Institution Zone
- The authority file will also be available in the Community Zone
- Permitted libraries will update/add authority records from within Institution Zone and automatically update the authoritative authority file





DIGITAL RESOURCES



MODS Metadata Standard



DIGITAL RESOURCES



Customer Value

- Institutions will be able to catalog content in MODS, a schema gaining popularity for various types of digital content.



Feature Highlights

- Support for cataloging and managing MODS records.
- Support for adding digital representations to MODS records.
- Indexing Discovery of MODS records.



ETD Metadata Standard



DIGITAL RESOURCES



Customer Value

- Institutions will be able to catalog content in ETD-MS, a schema designated for electronic theses and dissertations



Feature Highlights

- Designated DC application profile including ETD-MS elements
- Import, catalog, index and publish ETD-MS records



Publishing to Google Scholar



DIGITAL RESOURCES



Customer
Value

- Institutions will be able to publish digital content to Google Scholar



Feature
Highlights

- Define sets of digital titles to be published to Google Scholar



Migration tools – DigiTool Complex Objects



DIGITAL RESOURCES



Customer
Value

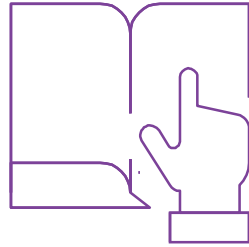
- Libraries will have streamlined ways to easily and quickly migrate multi-file records from DigiTool into Alma. This will allow for the full utilization of Alma digital asset management in a short time.



Feature
Highlights

- Migration utility for migrating content and metadata of multi-file records from DigiTool into Alma. This will expand the existing tool set for migrating simple objects from DigiTool.





RESOURCE SHARING



Enhanced Broker Integrations



RESOURCE SHARING



Customer Value

- Alma will more seamlessly allow requests to be fulfilled by either Alma managed resources or by external broker managed resources.
- Patrons will still be able to use a single Alma request form.



Feature Highlights

- It will be possible to set borrowing requests rotas to automatically push requests into ILLiad and RapidILL, using HTTP based API calls.



Patron ID Automatic Identification Rules



RESOURCE SHARING



Customer Value

- Operators at circulation desks will benefit from a more streamlined process for servicing guest patrons from other institutions.



Feature Highlights

- Rules will enable Alma to automatically identify where a patron is from, based on attributes of the scanned-in ID, or based on consortia wide unique IDs.



Enhanced Document Delivery Workflow



RESOURCE SHARING



Customer
Value

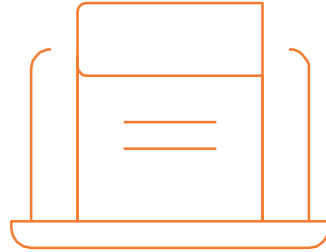
- Improved document delivery workflows will enable Alma libraries to more easily ship digital content.



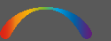
Feature
Highlights

- It will be possible to easily ship Alma managed digital content or to upload externally managed digital content, for shipment as a document delivery service.





FULFILLMENT



Booking Request Management Options



FULFILLMENT



Customer
Value

- Patrons will be able to place a booking request at the time granularity that the library allows, for example, hourly requests only.
- The library will be able to better administer short loans by allowing the items to be booked in controlled intervals.



Feature
Highlights

- The booking request form will be enhanced to allow requesting at a time resolution that the library determines, for example hourly requests only.



Smarter Fulfillment

FULFILLMENT



Customer Value

- Institutions with geographically dispersed libraries will be able to better rely on Alma's Smart Fulfillment to choose the best copy for fulfilling title level requests.
- Patrons will not have to manually choose a specific item that is closest to their required pickup location.



Feature Highlights

- Alma's Smart Fulfillment which allows title level requests to be automatically placed on the best copy will be further enhanced to also consider campus information and delivery time between the resource's location and the required pickup location.



Reshelling Time



FULFILLMENT



Customer Value

- Patrons and staff will have more accurate information about the status of items that are in the process of being reshelled.



Feature Highlights

- Items' check-in will put them in a 'reshelling' status that will automatically expire after a defined amount of time.



Delayed Emails



FULFILLMENT



Customer Value

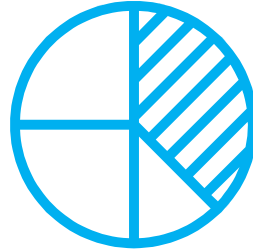
- Improved management of automatically sent emails will enable better management of delivery of notices to patrons.



Feature Highlights

- A configuration option at the desk will enable to delay hold shelf notices to the patron. For example, it will be possible to set a desk so that when a hold shelf notice needs to be sent, it will be triggered for sending after 60 minutes.





ANALYTICS



PO Lines With No Transaction



ANALYTICS



Customer
Value

- Ability to create reports and identify trends for POLs which have no transactions



Feature
Highlights

- The POLs which have no transactions, for example of type gift or "technical", will be reportable in Alma Analytics.
- They will be identified in Analytics by a new transaction type called "Non-Transactional"



Purchase Requests in Alma Analytics



ANALYTICS



Customer Value

- Institutions will be able to report on purchase requests thereby identifying which users are creating what kinds of requests in which areas. This can be a valuable component in determining collection management.



Feature Highlights

- A new dedicated subject area for purchase requests.
- Will include data on the bibliographic record, the creator, user to whom it is assigned, and the status.
- When the purchase request results in a POL then the POL number will also be included and can then be used as an input in other subject areas.



Improved Cost Per Use Information



ANALYTICS



Customer
Value

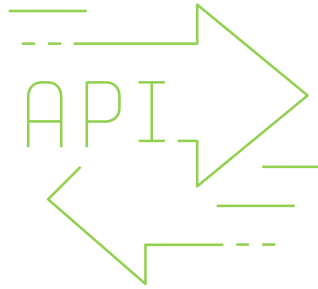
- Easier to use, fully integrated into the E-Inventory subject area, and more comprehensive.



Feature
Highlights

- Ability to report on E-Books.
- Ability to report on POLs of type 'One Time'.
- Ability to report using all fields of the E-Inventory subject area such as LC groups and resource types.
- New reports.
- New dashboard.





APIS AND OPEN PLATFORM



"Interested User" in New Order API



Customer
Value

- Alignment of functionality and options of the Alma User Interface with those of the APIs



Feature
Highlights

- Institutions will be able to include the "Interested User" via the API. This field is part of the POL and accessible in the Alma UI.
- Integrations with 3rd parties such as OASIS, GOBI, etc. will be able to include this information in the new order.



API to Update Location



Customer
Value

- Ability to control configuration of locations from the APIs



Feature
Highlights

- Ability to change, among other fields, the location "Fulfillment Unit".
- Via APIs multiple location fulfillment units will be able to be changed, thereby allowing for the possibility of controlling fulfillment policies based on periods (semester time or summer time) or hours (before 9:00 PM or after 09:00 PM)



Support for OpenID Connect for Authentication



Customer
Value

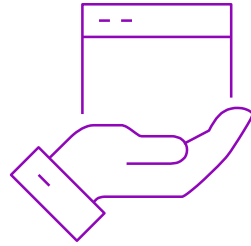
- Libraries will benefit from being able to use an additional authentication system type – [OpenID Connect](#)



Feature
Highlights

- Alma will support authenticating users using accounts managed by [OpenID Connect](#) based systems.





USER EXPERIENCE



My Activity Center – Recent Entities



USER EXPERIENCE



Customer Value

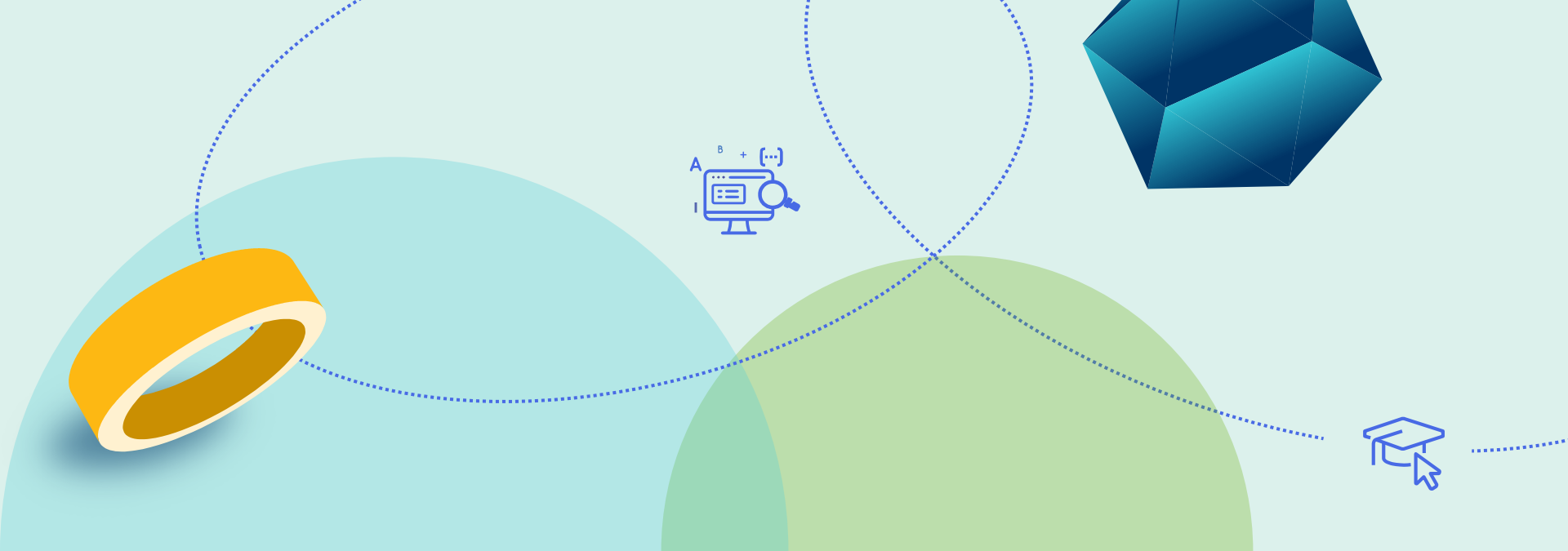
- Allow users to review their recent activity by navigating to the relevant entities they were working on.
- Provide an easy way for users to remain on their main workflow, but also get additional information, as needed.



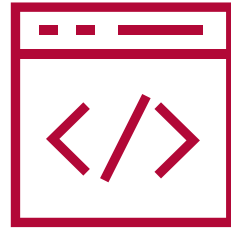
Feature Highlights

- My Activity Center screen showing recent activity.
- Showing Physical Items handled recently.
- Ability to group by date and linked holdings or bibliographic records.
- Perform actions such as view and edit.
- Ability to customize the historical list - by type, by date range.
- Ability to filter the list.

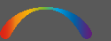




Roadmap Highlights H1 2020



METADATA & RESOURCE MANAGEMENT



Improved Metadata Editor UX & Workflows - Templates and Rules



METADATA & RES. MNG.



Customer
Value

- The cataloger will be able to perform cataloging tasks in an efficient and easy way.



Feature
Highlights

- Easy to use navigation tree with all the relevant actions.
- Main menu organized by entities and aligned with the navigation tree.
- Improved workflows for managing templates and applying them to records
- Easier workflow to test rules on records



Linked Data – uploading, managing relationships and publishing (e.g. BIBFRAME)



METADATA & RES. MNG.



Customer
Value

- Catalogers will be able to use Linked Data record in Alma for catalog management and publishing in various formats (e.g. BIBFRAME).



Feature
Highlights

- Ability to upload records cataloged in various linked data graph formats such as BIBFRAME.
- Ability to manage relationships between the various records legacy format and linked data (URI / IRI)
- Ability to publish catalog as linked data format



Community Zone Bibliographic Records – Local Extensions



METADATA & RES. MNG.



Customer Value

- Institutions will be able to add local extensions to Community Zone bibliographic records in order to record and expose institution specific proprietary information.



Feature Highlights

- Institutions will be able to add local extensions to bibliographic records that are managed in the Community Zone.
- Local extensions will only be available for the institution.
- Local extensions will be published to discovery .



Community Zone Contribution Enhancements



METADATA & RES. MNG.



Customer
Value

- Electronic collections contributed to the Community Zone will be open for updates by the entire community.



Feature
Highlights

- The contributor will have several options:
 - Open the collection to updates by the entire community.
 - Open the bibliographic records for updates.





ACQUISITIONS



SUSHI Improvements



ACQUISITIONS



Customer Value

- Libraries will enjoy enhanced automation and monitoring options for SUSHI imports.



Feature Highlights

- Better automated tools will manage exceptions in the SUSHI import process.
- Dashboards will enhance the library's ability to monitor the status of its SUSHI imports.
- Improvements in the management of SUSHI vendor records will increase the success rate of SUSHI imports.
- “Missing data screen” - Visual indicators to differentiate between “Error” and “Data not available”



Audit Retention Management



ACQUISITIONS



Customer Value

- Better control of history information, by allowing libraries to define how far back POL and Invoice history information should be retained.



Feature Highlights

- It will be possible to configure retention related parameters that will define how far back the POL and invoice changes history needs to be retained.
- Records older than the defined retention period will be purged from the system.



Acquisition Network – Task Lists



ACQUISITIONS



Customer Value

- Consortia's working with an Acquisition Network and functioning as a buying club will be better able to manage and communicate negotiated licenses to consortia members.



Feature Highlights

- Consortia License Negotiation Task List will allow the consortia office to keep track of the status of license negotiations.
- The institution Task List will lists licenses that were negotiated by the consortia with options to order or renew.





LOCALIZATION



Japan - Integration with NACISIS-CAT Catalog



LOCALIZATION



Customer Value

- Better support for Japanese libraries.
- Institutions using Alma in Japan will be able to continue to benefit from NII cataloging services.
- Staff will be able to perform day to day work in Alma, reducing the need to switch between systems.



Feature Highlights

- Catalogers will be able to:
 - Search and retrieve bibliographic records from NII.
 - Receive bibliographic record updates from NII.
 - Contribute records and updates to NII.



Community Zone Level Sets



LOCALIZATION



Customer Value

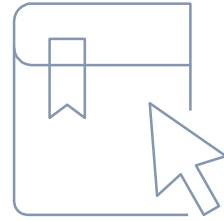
- Better support for libraries that utilize a combination of global authorities and locally managed variations of these authorities.



Feature Highlights

- Staff will be able to:
 - Search the Community Zone.
 - Save queries as a logical set of the records in the Community Zone.
 - Export these records using the logical set.
- This will allow staff to process these records in bulk for subsequent use in their locally managed vocabularies.





DIGITAL RESOURCES



Customizable Delivery



DIGITAL RESOURCES



Customer Value

- Institutions will be provided with a newly designed Alma viewer, fully customizable via Primo Studio



Feature Highlights

- Align Alma Viewer with Primo's advanced customization tool-set.
- Align Alma Viewer with Primo's look and feel.



Migration tools from Dspace, ContentDM and more



DIGITAL RESOURCES



Customer Value

- Institutions will be provided with tools facilitating full migration of digital content from leading DAM systems such as ContentDM, Dspace, Islandora and more



Feature Highlights

- Migration tool from Dspace
- Migration tool from ContentDM
- Migration tool from Islandora
- Migration tool from Digital Commons



Advanced Digital Discovery



DIGITAL RESOURCES



Customer
Value

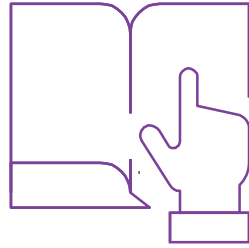
- Advanced discovery of digital content, providing multiple discovery options of digital collections



Feature
Highlights

- Embed Alma viewer in discovery page
- Advanced collections viewer
- Exhibition view





RESOURCE SHARING



Hybrid Rotas



RESOURCE SHARING



Customer Value

- Library staff will be able to seamlessly use Alma in a peer to peer (P2P) mode in conjunction with other resource sharing systems that are used in the library, involving minimal library staff mediated work.



Feature Highlights

- It will be possible to configure the NCIP partner with one or more rota templates.
- When a borrowing request is created with that broker, the configured rota templates will also be assigned to the request and located.
- This will support a use case where a borrowing request starts off as managed in a broker system, and then moves on to be managed as a peer to peer one.



Enhanced Integration With Alma Acquisitions



RESOURCE SHARING



Customer Value

- The library service will be expanded to process automatic purchasing requests based on non-fulfilled resource sharing requests.



Feature Highlights

- Library staff will be able to trigger a purchase request for failed resource sharing requests.



Copyright Management



RESOURCE SHARING



Customer
Value

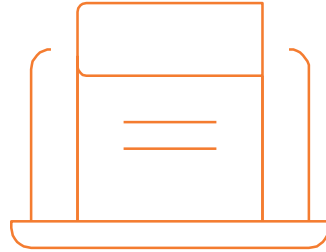
- Library staff will enjoy more options for copyright processing of resource sharing requests.



Feature
Highlights

- Integrations with copyright agencies such as the Copyright Clearance Center will streamline the copyright processing for the resource sharing staff.





FULFILLMENT



RFID Support for Reading Multiple Items



FULFILLMENT



Customer
Value

- Circulation desk operations at RFID enabled desks will enjoy faster operations by scanning multiple items in one action.



Feature
Highlights

- Operators at RFID enabled desks will be able to scan multiple items in one action.



Queue Triggered Purchase Requests



FULFILLMENT



Customer
Value

- The library will benefit from an integration option between a fulfillment action and the purchase requests queue



Feature
Highlights

- It will be possible to feed back fulfillment requests into the purchase requests queue, creating purchase requests based on a high demand of items



Multiple Item Recall



FULFILLMENT



Customer
Value

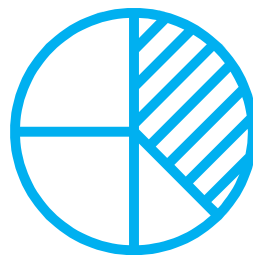
- Library will be able to implement more flexible recall policy options



Feature
Highlights

- It will be possible to set a recall policy to apply the shortened due date to any item or to a configurable percentage of copies that is in a request queue.





ANALYTICS



New Fund Transaction Measures



ANALYTICS



Customer Value

- Institutions will be able to evaluate their funds more deeply so as to identify situations which need to be brought to the attention of staff.



Feature Highlights

- Four new fields in "Funds Expenditures" subject folder "Fund Transactions":
 - Cash Balance
 - Available balance
 - % remaining (considering expended and encumbered)
 - % remaining (considering only expended)



Advanced Reporting on OCLC Fields



ANALYTICS



Customer Value

- Ability to filter by very specific OCLC numbers depending on the field and subfield. Separate from the existing "Network Number" which also comes from the 035 and 019.



Feature Highlights

- The following fields will be included:
 - OCLC Control Number (035a+z)
 - OCLC Control Number (035a)
 - OCLC Control Number (035z)
 - OCLC Control Number (019)



Role Profiles for Analytics Objects



ANALYTICS



Customer
Value

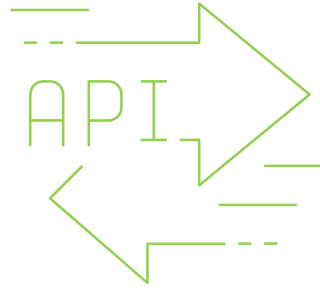
- Ability to manage which roles are attributed to which objects in an organized manner



Feature
Highlights

- When defining an analytics object (such as a dashboard or widget) it will be possible to attribute user roles to the object by clicking "Add from profiles" as currently exists on the user record.
- This will then open the user role profiles and choosing one or more specific profile will add all of the relevant roles to the object.





APIS AND OPEN PLATFORM



Match Method in APIs for Creating Bib and Aut Records



Customer
Value

- Ability to use APIs to conditionally create bibliographic and authority records based on the existence of matched records that exist in the Alma user interface.



Feature
Highlights

- New parameter in the bibliographic and authority API to state if a match method will be used.
- If "true" and a match is made then the record will not be created and the matched record MMSIDs will be returned.
- The match method will be the same as the one used when saving a record in the MD editor.



API for Invoice Creation and Update



Customer
Value

- Ability to create and update invoices from outside of Alma.



Feature
Highlights

- In addition to creating and updating invoices manually and via EDI, it will also be possible to do so via APIs.
- This will enhance the integration processes with external vendors and other third party units.



On-Platform Apps



Customer
Value

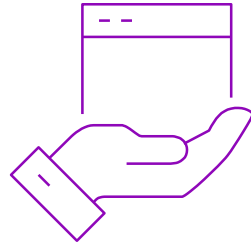
- From within Alma it will be possible to use and contribute on-platform apps developed by the community for use in Alma



Feature
Highlights

- As more and more institutions develop applications for use with Alma the need has arisen to maintain and share these applications in an organized and user friendly way.
- Via an integrated interface within Alma it will be possible to
 - use on-platform apps that have been contributed by the community
 - contribute locally made applications.





USER EXPERIENCE



Main Menu Improvements



USER EXPERIENCE



Customer Value

- User ordinated
- Improved real estate
- Allow scalability of the menu to support new areas and models



Feature Highlights

- Search bar as part of the header with all general tools
- Vertical left menu with more and easier access to menu items
- User will be able to customize a special menu with unlimited menu items



Facet Multi-Selection and Exclusion



USER EXPERIENCE



Customer Value

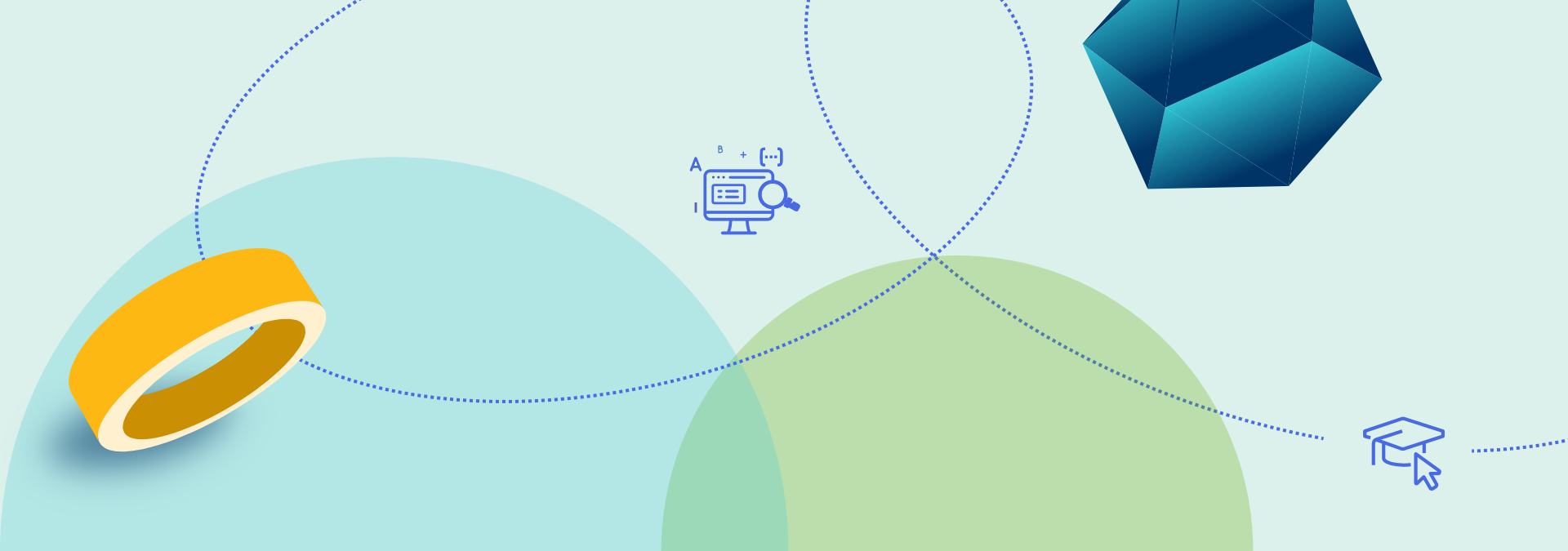
- Improve the user ability to filter lists that use facets.
- Improve efficiency by reducing the need to filter each time with a different value.



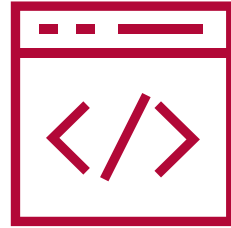
Feature Highlights

- Ability to select multiple values per facet and filter the lists accordingly.
- Ability to exclude values in a facet.
- Retain facet selection.

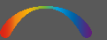




Roadmap Highlights H2 2020/2021



METADATA & RESOURCE MANAGEMENT



Metadata Editor – Advanced Features



METADATA & RES. MNG.



Customer Value

- The cataloger will be able to preform new actions in order to improve cataloging efficiency.
- It will be easier for copy catalogers to edit and mange the catalog.



Feature Highlights

- Provide the ability to undo field deletion and other changes.
- Provide a form for each field showing each sub field separately with relevant controlled vocabulary if available.
- Enable the user - with one wizard - to preform either a merge, overlay or combined action including rule direction.



Linked Data - Basic Record Editing (e.g. BIBFRAME)



METADATA & RES. MNG.



Customer
Value

- As part of our Linked Data collaboration program, catalogers will be able to edit records in various linked data format such as BIBFRAME and search for them.



Feature
Highlights

- Ability to edit records in linked data format such as BIBFRAME using the Alma Metadata Editor including URI and IRI references.



Improvements to Electronic Activation Task List



METADATA & RES. MNG.



Customer Value

- Electronic activation task list will be improved to better support institution specific activation workflows.



Feature Highlights

- Better control of status setup.
- Ability to add comments and notes to each status.
- Ability to view history of status changes.





ACQUISITIONS



Enhancements to PO Line Workflows



ACQUISITIONS



Customer Value

- Improvements in the PO line workflow will achieve a more streamlined workflow and more automation of the workflow steps.



Feature Highlights

- Rules will automatically assign PO Lines to a specific staff user for PO lines in review/claim/renew - for example based on the fund.
- It will be possible to create PO lines with the items already marked as received.



Improved Indexing and Faceting



ACQUISITIONS



Customer Value

- Searching of acquisitions administrative data will be faster. Addition of flexible facets will enable users to work more speedily, and will improve the overall efficiency while working with acquisitions workflows and while using the simple/advanced search.



Feature Highlights

- Improvements to the indexing on an infrastructural level.
- Text-based indexing will be replaced by SOLR-based indexing
- New facet options
- POL attributes in the advanced search



Improved License management



ACQUISITIONS



Customer Value

- Enable users to create and fully delete licenses in a stream line manner.



Feature Highlights

- Improvement with loading of ONIX-PL files in order to easily mirror the vendor's information and terms in use into Alma
- Enhancement to the existing functionality of deleting a vendor in Alma which will allow a partial/full removal of a vendor from





LOCALIZATION



Japan - Integration with NACSYS-CAT ILL



LOCALIZATION



Customer Value

- Better support for Japanese libraries.
- Institutions using Alma in Japan will be able to continue to benefit from NII ILL services.



Feature Highlights

- Staff users managing resource sharing requests will be able to integrate with NII as a broker system.



Batch Conversion Between Different MARC Formats



LOCALIZATION



Customer Value

- Better support for libraries that utilize a combination of MARC21 and a regional variant of MARC in their catalog.



Feature Highlights

- Staff will be able to convert a single record or in bulk from one MARC format to another, using Alma's crosswalks.
- This will support data cleanup and maintenance of catalog records that were incorrectly managed using one of the MARC variants.



Enhanced SRU/SRW Support– Advanced BIB Update Options



LOCALIZATION



Customer Value

- Updates to Alma using SRU/SRW will happen on a more frequent basis, providing staff and end-users with improved records quickly and in a timely manner.



Feature Highlights

- Updates to bibliographic records will happen more frequently.
- Staff users will not need to wait for a batch process to update the catalog – it will happen when the update is done in the external system resulting in an update in Alma using SRU.



Z39.50 for Locally Managed Authorities



LOCALIZATION



Customer Value

- Enhanced support for libraries that locally manage their own authority vocabulary.



Feature Highlights

- Libraries will be able to externalize their locally managed authority records using the Z39.50 protocol.
- The current Z39.50 integration profile will be extended to support both bibliographic (exists today) and authority records.



Data Extract of Bibliographic Records in CSV/Excel Format



LOCALIZATION



Customer
Value

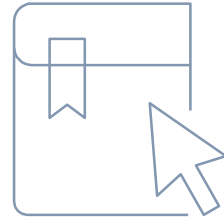
- Allow integration with 3rd party systems that do not support MARC format by extracting bibliographic records in Excel/CSV format.



Feature
Highlights

- Specialized task that will export BIB records in an Excel/CSV format





DIGITAL RESOURCES



Data Safeguarding



DIGITAL RESOURCES



Customer
Value

- Institutions will be provided with tools to control and safeguard the content deposited into their repositories, ensuring long-term access to the files.



Feature
Highlights

- Verify fixity, format and mime-type of files deposited to the system.
- Functionality required for achieving the Core Trust Seal, a core level certification based on the DSA-WDS Core Trustworthy Data Repositories Requirements catalog and procedures.



Advanced Full-Text Search



DIGITAL RESOURCES



Customer
Value

- Patrons will benefit from a complete full-text search experience, where they can search for content with words from the files' full-text, which will then be highlighted in the digital viewer.



Feature
Highlights

- Full-text search terms which were used for discovering content in Primo will be highlighted in the file in the Alma viewer.



IxIF Support



DIGITAL RESOURCES



Customer
Value

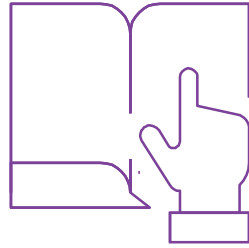
- Benefit from advanced IIF framework capabilities to also handle non-image-sequence resources



Feature
Highlights

- Render 3D Images through IxIF framework
- Render audio-Visual content through IxIF framework
- Render PDFs through IxIF framework





RESOURCE SHARING



Support for InnReach APIs



RESOURCE SHARING



Customer Value

- Integration with InnReach will be seamless and real time, without having to rely on an ongoing publishing process and without having to install the DCB client to mediate NCIP communication between Alma and InnReach.



Feature Highlights

- Alma will support the InnReach APIs for real time update about changes in the repository and as a replacement of the currently NCIP based integration.



Harvesting External Resources for Resource Sharing



RESOURCE SHARING



Customer
Value

- Library staff will be able to use third-party catalogs as a source for creating a resource sharing request.



Feature
Highlights

- Operators will be able to harvest borrowing request information from searched sites using an application that will copy metadata from the searched catalog to an Alma request form.



Document Delivery Platform for Non-Alma Partners



RESOURCE SHARING



Customer
Value

- The library will be able to use the Alma document delivery platform even if the partners are not Alma partners.



Feature
Highlights

- The requesting patrons will get an email with a link that will offer them limited access to the resource they requested, even if they are not Alma patrons.



Article Galaxy Support



RESOURCE SHARING



Customer Value

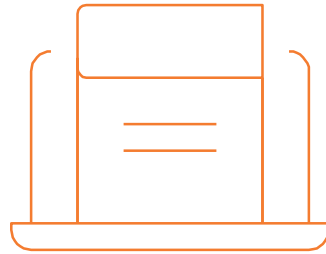
- Article Galaxy will be supported as a seamless source for obtaining resource sharing requested resources.



Feature Highlights

- APIs will enable library staff to purchase resources from Article Galaxy if they can not be obtained via the institution's rota.





FULFILLMENT



Real Time Calculation of Lost Item Cost



FULFILLMENT



Customer
Value

- Library staff will be better able to manage lost item replacements by pulling item costs online from Amazon.



Feature
Highlights

- Amazon APIs will be used to fetch the real time cost of lost items, in order to accurately create lost item replacement costs.



Sound Alerts at Circulation Desks



FULFILLMENT



Customer
Value

- Staff work at the desk will be made more efficient and less error prone by adding sound alerts to the circulation desk UI



Feature
Highlights

- Actions that require staff attention will trigger sound alerts at the circulation desk



Real Time Pushing of User Data in Fulfillment Network



FULFILLMENT



Customer
Value

- Linked users accounts across a fulfillment network will be more tightly bound and up do date with changes that happen to the source record.



Feature
Highlights

- Updates to the source record of a user linked account in the Fulfillment Network will automatically update the copy record in real time



Proxy Mode



FULFILLMENT



Customer
Value

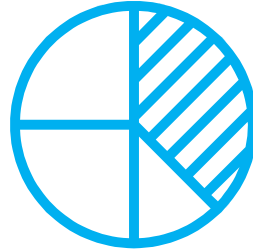
- The library will be able to implement new user proxy models



Feature
Highlights

- It will be possible to define a ‘full proxy’ mode for a user record, so that all loans and requests placed using that user login will be registered on the sponsor user record





ANALYTICS



New Analytics Platform



ANALYTICS



Customer
Value

- State of the art advanced tool for designing and running Alma Analytics reports, including a Data Visualization tool with new features.



Feature
Highlights

- Intuitive interface
- Predictive analysis
- Simplified layout
- Easier methods to create new groups, calculations, and measures



Enhanced Bibliographic Details Folder



ANALYTICS



Customer
Value

- New fields based on the LDR and 008 will be included in the shared "Bibliographic Details" and "Holding Details" folders thereby allowing for a more precise method for filtering.



Feature
Highlights

- New fields will include
 - Full LDR (for both Bibliographic and Holding)
 - Full 008 (for both Bibliographic and Holding)
 - "Form of item" from MARC 21 008 pos. 23 (for Bibliographic)
 - "Government publication" from 008 pos. 28 (for Bibliographic)
 - "Method of acquisition" from 008 pos. 07 (for Bibliographic)



"API Usage" in Analytics



ANALYTICS



Customer
Value

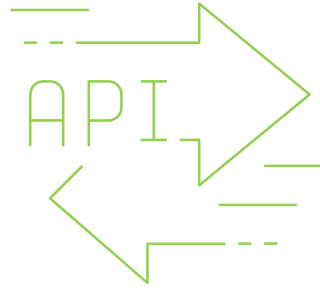
- Ability to report on how APIs are (and are not) being used in the institution.



Feature
Highlights

- Will include:
 - API Group (Acquisitions, Bibliographic, Fulfillment, etc.)
 - API Name (invoices, funds, loans, etc.)
 - Method (GET, PUT, POST, DELETE)
 - Number of executions





APIS AND OPEN PLATFORM



Export Bibliographic Records in BIBFRAME



Customer
Value

- It will be possible to quickly and easily export entire sets of Alma records in BIBFRAME format.



Feature
Highlights

- In addition to the "MARC Binary" and "MARC XML" options of export via the "Export Bibliographic Records" job it will also be possible to choose "BIBFRAME". This is in addition to the current general publishing profile which already can publish BIBFRAME format.
- This will allow for the institution to quickly export an entire set. This is especially useful for situations in which a full publishing profile is not necessary.



APIs for Purchase Requests



Customer
Value

- The use of an API for purchase requests will allow the institution to create integrations for students to create purchase requests from outside of Primo.



Feature
Highlights

- A new API will allow for the creation and update of purchase requests.
- In this way the institution can manage the entire purchase request workflow via external processes.



APIs for POLs with No Inventory



Customer
Value

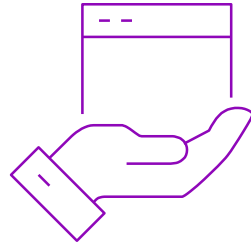
- Allow for the creation of POLs with no inventory via an API as is possible from the Alma User Interface



Feature
Highlights

- This will answer the need to integrate with vendors who create orders for the institution but do not include inventory.
- In these cases the order will be created and the inventory will be added at a later date, for example at the time of arrival or activation.





USER EXPERIENCE



Configuration Improvements



USER EXPERIENCE



Customer Value

- Improve access to configuration according to user workflows
- Easier and more efficient configuration based on code tables and mapping tables



Feature Highlights

- The user will be able to find in an easier way all relevant configurations for a specific workflow using a more granular menu
- Inline editing of code tables and mapping tables making it easier to update them
- Enable the user to export and import code tables and mapping tables



Accessibility level AA (WCGA 2.1)



USER EXPERIENCE



Customer Value

- Enable users with disabilities to use Alma with all models.



Feature Highlights

- Comply WCGA 2.1 with level AA without exceptions
- Cover also Alma Metadata Editor



Entities Tags



USER EXPERIENCE



Customer Value

- Users will be able to mark relevant entities in the system and use this mark in order to help their day to day workflows enabling them to easily focus on relevant tasks.



Feature Highlights

- The user will be able to add and remove multiple tags to an entity, such as purchase order, bibliographic record, user, etc.
- The user will be able to search by using these tags to create sets.
- The user will be able to use the tags to filter lists.
- The user will be able to use the tags in analytics.





ExLibris
Alma



Thank You

ExLibris®
a ProQuest Company