



Primo VE Display Configuration

An introduction to using Primo VE display configuration, including Views, advanced search, brief and full display and other display options

Bettina Schmid



Introduction

Bettina

- Senior Solution Architect EMEA
- Librarian (since 2005)
- Joined Ex Libris in 2014
- Hamburg, Germany
- Alma, Primo VE, Leganto

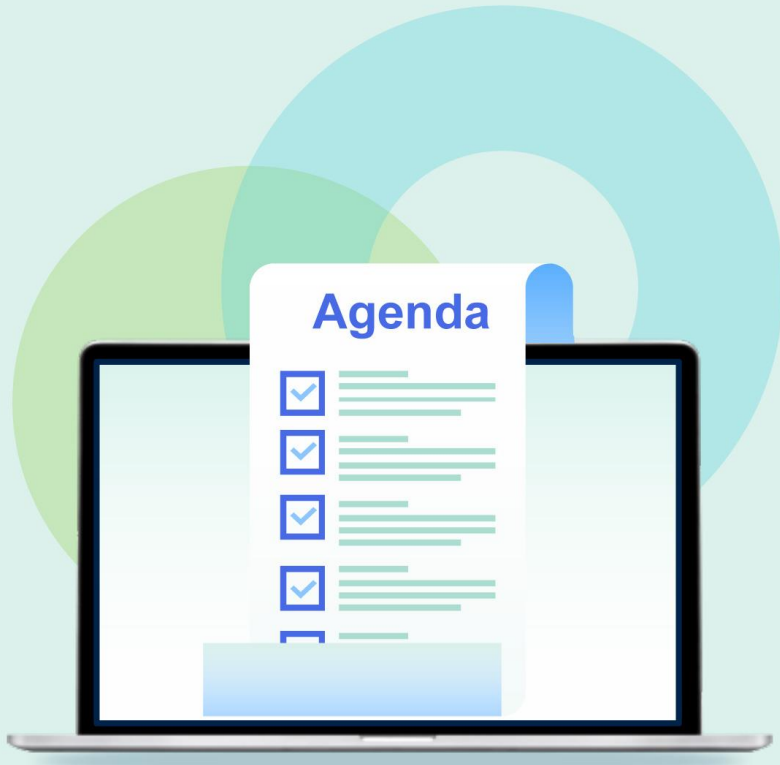


Session Description

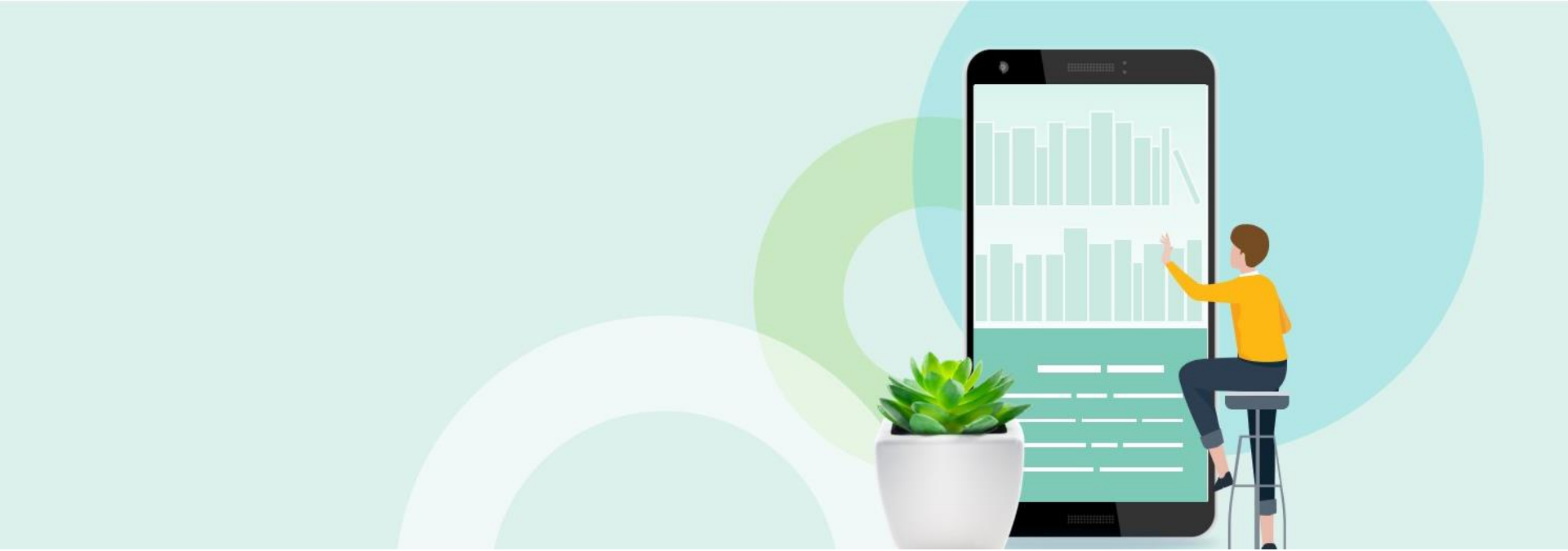
Introduction to Display Configuration:

- Views
- Search Profiles and Search Results
- Brief and Full Display
- Customization





- Adding a View
- Search Profiles and Results
- Brief Display Configuration
- Full Record Display Configuration
- Customization



Adding a View

Views

- What End Users see in Discovery UI
- Based on Institution / Campus / Library / User Group
- Changes can be tested immediately
- Assigned Role: **Discovery - Admin**





DEMO

Questions from the sessions:

- Q: Is there a “read-only”-role for discovery admin?
 - A: No
- Q: Can you transfer your Primo NUI customization Package ZIP file into Primo VE and it would work? Or is there a lot of changes that need to be made when moving over to Primo VE?
 - A: The requirement to move to Primo VE from an existing Primo instance is, besides being an Alma customer, to notify Ex Libris of your interest. You also will need to use the new Primo UI. Ex Libris tools will migrate the setup and UI customization from your existing Primo instance for you to test. The customer’s assistance will be required to help Ex Libris to define the authentication policy for Primo VE. Please click [here](#) for more FAQs for existing Primo customers interested in PrimoVE
- Q: Can we download the MARC record?
 - A: *open, response will be sent as follow-up*



Questions from the sessions:

- Q: Our institution has Dublin Core records in our Alma. Some of the fields don't display in Primo. Can we add a local field for Dublin Core elements?
 - A: *open, response will be sent as follow-up*
- Q: Can you restrict Purchase Request to Faculty?
 - A: Purchase requests is a service exposed from Alma to Primo. Like any other service, it can be hidden from groups of users using Alma's Display Logic Rules. This service is initially hidden from users by default with the rule **Hide Service Purchase Request**.
 - To enable the service for all Primo users, remove this rule.
 - To hide the service only for specific groups, remove this rule and then add a rule/rules to hide the service for those groups.
 - You can also configure all labels used for this feature.
 - For more information about configuring display logic rules and configuring labels, see [Discovery Interface Display Logic](#).



Useful links

- [View configuration](#)
- [Scope configuration](#)
- [Display & Local Fields](#)
- [Normalization Suite](#)
- [Labels](#)
- [General Electronic Services](#)

Examples of institutions using PrimoVE with more than one view

- University Liège

- Main

https://explore.lib.uliege.be/discovery/search?vid=32ULG_INST:ULIEGE&lang=fr

- Special Collection

https://explore.lib.uliege.be/discovery/search?vid=32ULG_INST:Legito&lang=en

- National Gallery of Art

- Main https://library.nga.gov/discovery/search?vid=01NGA_INST:NGA

- Image Archive

https://library.nga.gov/discovery/search?vid=01NGA_INST:IMAGE

Examples of institutions using PrimoVE with more than one view

- The Colorado School of Mines
 - Main <https://library.mines.edu/>
 - Dissertation & Thesis
https://mines.primo.exlibrisgroup.com/discovery/search?vid=01COLSCHL_INST:MinesTheses&sortby=rank&lang=en
- Tri College Consortium in Pennsylvania (Single Alma institution for three colleges)
 - Swarthmore College:
https://tripod.swarthmore.edu/discovery/search?vid=01TRI_INST:SC&lang=en
 - Haverford College:
https://tripod.haverford.edu/discovery/search?vid=01TRI_INST:HC&lang=en
 - Bryn Mawr College:
https://tripod.brynmawr.edu/discovery/search?vid=01TRI_INST:BMC&lang=en

More PrimoVE sessions:

Normalization Rules for Search and Display

In this session you can learn the basic of using Primo VE Normalization rules , tips and tricks of how to change normalization rules for search and display

Presenter: Moran Vardi

August 5th

9am (GMT+3)

5pm (GMT +3)



Thank you!

bettina.schmid@exlibrisgroup.com